



MAPPING AND INVENTORY OF INVASIVE PLANTS

XXXXXX XXXXX



Company: XXXXX XXXXX XXXXX

Address: XXXXX XXXXX XXXXX

City/State/Zip code: XXXXX XXXXX XXXXX

PO Number: XXXXXXXXXXXX

December 21, 2021

Mapping and Inventory of Invasive Plants Summary

Alpha Eagle Technology (AET) is pleased to present you with our final report of (Mapping and Inventory of Invasive Plants) in xxxxx xxxxx xxxxx Research Reserve (xxxxx xxxxx xxxxx). The area consisted of 452 acres of wet pine savannas, pine flatwoods and disturbed areas within xxxxx xxxxx xxxxx. AET used a combination of Unmanned Aerial Vehicles (UAV) and ground surveys to locate targeted invasive species of Chinese Tallow Tree (*Triadica sebifera*), Cogon Grass (*Imperata cylindrica*), and Camphor Tree (*Cinnamomum camphora*). Uniquely verified signatures were identified from field surveys in concert with imagery interpretation and used to create invasive species distribution maps from digitized orthomosaic imagery developed from UAV data.

Project Objective

Invasive plants infest the xxxxx xxxxx xxxxx Research Reserve (xxxxx xxxxx xxxxx), particularly along roadsides and ditches where disturbances occur most frequently. The most common invasive species throughout the xxxxx xxxxx xxxxx are torpedo grass (*Panicum repens*), Japanese climbing fern (*Lygodium japonica*), cogongrass (*Imperata cylindrica*), and the Chinese Tallow Tree (*Triadica sebifera*). Cogongrass and the Chinese Tallow Tree are of the most immediate concern. Both species are very aggressive with expanding populations throughout xxxxx xxxxx xxxxx (xxxxx xxxxx xxxxx website, accessed November 21, 2021).

The objective of this project is to provide distribution and abundance maps of three invasive species (Chinese Tallow Tree, Cogon Grass and Camphor Tree) that occur within a defined project area of xxxxx xxxxx xxxxx.

Project Area Description

Mississippi's wet pine savannas are not associated with riverine floodplains but are found on broad coastal flats and sloping plains with more than 60 inches of rainfall annually. They remain saturated for long periods during the growing season. The coastal region receives ample growing season rainfall from frequent convective thunderstorms, which results in the surface horizon remaining saturated for extended periods because of the slow permeability of the area's subsoils. Stands of wet savanna in good condition have an

herbaceous ground cover that is exceptionally diverse. While plentiful rainfall and sunlight create ideal growing conditions, a lack of soil nutrients prevents any one species or suite of species from dominating. Of more than 200 understory plant species, two-thirds are graminoids (grasses) and one-third consist of forbs and ferns. Prominent groups of herbs include grasses, asters, sedges, pipeworts, pitcher plants, and lilies. Common grasses include beaks edge, toothache grass, switchgrass, and three-awn. Forbs include rayless goldenrod, one flowered honeycomb head, sunflowers, pitcher plants, meadow beauties, sundews, and orchids (USFWS 2008).

Vegetation

Vegetation within the project area can be described generally as wet pine savannas and flatwoods, cypress strands and disturbed areas. The vegetation classification system used by xxxxx xxxxx xxxxx includes vegetation descriptions by Cowardin and the USFWS Wetlands Inventory Classification (Cowardin 1979) as water, freshwater marsh/aquatics, high marsh, roads, shrub, tidal/ inundated marsh, trees, upland grasses, wet herbaceous.

Figure 1. Vegetation map of project area.

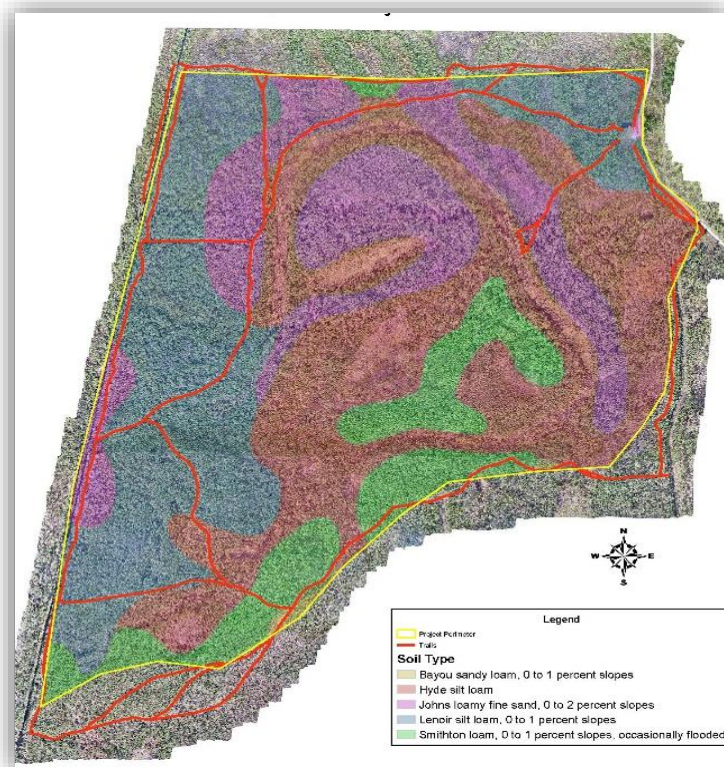


Soils

Soils are Ultisols of wet areas that have clayey horizons frequently impervious to groundwater percolation (Clewell and Raymond 1995). These soils tend to be strongly acidic and infertile. They support wetland vegetation types such as wet pine savannas and cypress depressional wetlands. The dominant soil types and series (with recent soil classification) of the xxxxx xxxxx xxxxx project area include the following (from USDA Soil Survey, Jackson County 2006) soil types:

- Bayou Sandy Loam, 0 to 1 percent slopes
- Hyde Silt Loam
- Johns Loamy Fine Sand, 0 to 2 percent slopes
- Lenoir Silt Loam, 0 to 1 percent slopes
- Smithton Loam, 0 to 1 percent slopes

Figure 2. Soils Map, xxxxx xxxxx xxxxx



Land Use History

Upon inspection of aerial imagery from 1968, the project area was significantly more open with much less forest vegetation present than observed today. Over the last 50 or more years, the landscape of the area has converted from open wet pine savanna habitat that more broadly occurred across the landscape to slash pine dominated flatwoods. Wet pine savannas require frequent periodic fires to reduce woody vegetation such as shrubs and trees from invading the habitat. In the absence of frequent or periodic fire activity, slash pine trees have invaded and over time become the dominant vegetation on the site.

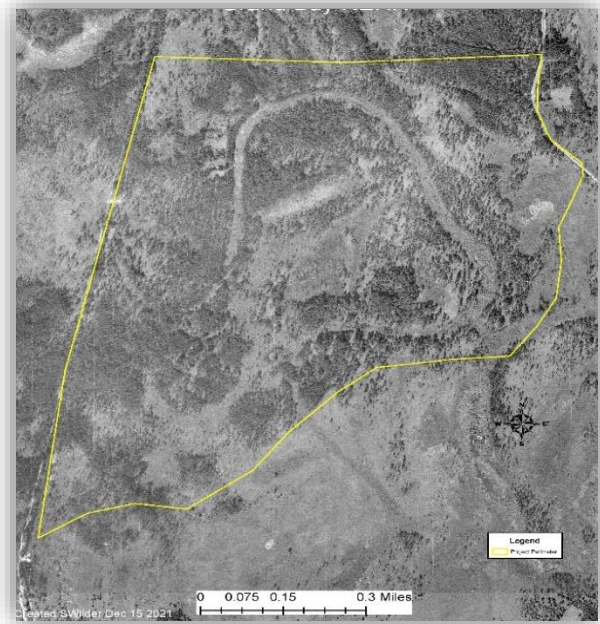
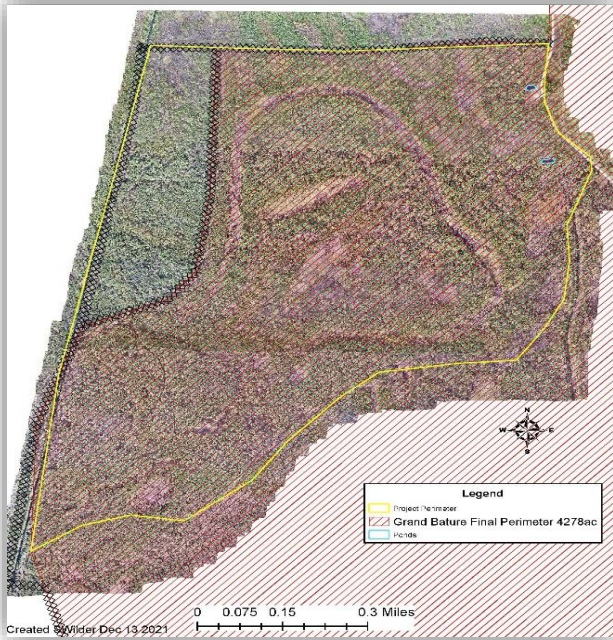


Figure 3. 1968 Aerial Imagery

From the imagery it was also observed that no man-made ditches were present in 1968. Since 1968 and before the land was purchased by the Federal Government in 1990, two man-made ditches were constructed to aid in draining the site, perhaps for more agricultural prospects like cattle farming (T Wilder, J Pritchford, personal communications, November 2021). However, it is not known if cattle were present on the site at any time.

There is an existing two-track road that was used for access across the area and has existed since the 1960s as evident from the 1968 aerial photography. Remnants of the interior road remain today throughout the project area. In addition to the road and plowed fire breaks, spoil banks were developed in the development of man-made ditches and ponds that are on the eastern and southern boundaries of the project area (i.e., Middle Bayou). A large parking area is found along the eastern edge of the project area. This area has been reported to be a tire dump at one time before the land was acquired by the USFWS (Tony Wilder, FWS Refuge Fire Manager, Gulf Coast Complex, pers. Communication, November 2021).



The project area was subject to a wildfire in Feb 2016. The xxxxx xxxxx xxxxx Fire burned approximately 2200 acres throughout xxxxx xxxxx xxxxx. A post-fire assessment was made following the fire and the fire burned with high burn severity in portions of the project area. (Wilder 2016). As a result of the wildfire suppression activities, several fire plow lines were constructed and remain in place today. Since the 2016 wildfire, no prescribed burns have taken place within the last five years on the site. However, existing fire lines have been refreshed (Nov 2021) in preparation for a prescribed burn in the near future. (Figure 4).

Figure 4. xxxxx xxxxx xxxxx fire perimeter map showing fire plow lines.

Invasive Species Descriptions

Figure 5. Three Invasive species, Chinese Tallow Tree, Cogon Grass and Camphor Tree.



Tallow Tree



Cogongrass



Camphor Tree

Chinese Tallow Tree (*Triadica sebifera*) is a popular ornamental tree used in gardens in the southeast U.S. It averages 20 feet in height and is typically considered a small to medium sized tree, with some trees reaching heights of 40 to 50 feet. Chinese Tallow Tree is fast growing with broad ovate leaves that change colors from a bright yellow color in early fall to a vibrant red color in mid-late fall. Chinese Tallow Tree is a flowering plant that attracts bees and other insects with honey production popular as a commercial opportunity. Fruits form on the tree and ripen in late August until November (Texas Invasive Species Institute 2021).

Phenology. Chinese Tallow Tree is a deciduous tree whose leaves turn a bright yellow or deep red before falling off in the fall to early winter. Species with similar phenological signatures include red maple (*Acer rubrum*), cypress (*Taxodium distichum*) and black gum (*Nyssa sylvatica*). Chinese Tallow tree is distinguished from these species by leaf shape, color and an open-branching tree architecture.

Ecological Threat. The Chinese Tallow Tree was introduced to the U.S. in the 1700's for ornamental purposes. Since its introduction, it has also been used for making soap and seed oil. It has become well established since its introduction and displaces several native

species of plants. Native plant species are outcompeted for resources once the Chinese Tallow Tree becomes established in an area. With an ability to utilize minimal water sources from deep taproots and an affinity for growing in crowded places, native plant species are quickly eradicated from areas infested with Chinese Tallow Trees. The leaves and fruit of Chinese Tallow Trees are considered toxic to humans and cattle. If ingested by humans, severe nausea and vomiting occurs. Seed dispersal of Chinese Tallow Trees is facilitated by water and birds that feed on fruits. Large reproductive Chinese Tallow Trees are capable of producing up to 100,000 seeds, which are spread most commonly by birds, facilitating further establishment of the plant (Texas Invasive Species Institute 2021).

Cogon Grass (*Imperata cylindrica*) First arrived accidentally in Louisiana in 1912, and it was introduced intentionally to Florida in the 1930s (Bryson and Carter 1993). It was used as packing material for imported goods (Tabor 1949) and as forage (Dozier et al. 1998) and for erosion control (Moorehead et al. 2007).

Cogon Grass has been named one of the 10 worst weeds in the world. Native to Southeast Asia, Cogon Grass was introduced to the southeastern U.S. over a century ago and has rapidly invaded disturbed areas across the southeastern U.S., including pastures, fallow fields, forests, and highway and powerline rights-of-way. Seeds are typically wind-dispersed but the plant can spread vegetatively through rhizomes. These rhizomes can be spread to new places by vehicles and equipment. Cogon Grass produces upright stems up to 4' tall and usually grows so thick it crowds out native vegetation. Stems are generally light green with a yellowish color. The midrib of leaves is offset (not in the center of the leaf). Cogon Grass flowers early in the growing season (spring), whereas most native grasses flower in summer or fall. Control of Cogon Grass is difficult, time-consuming, and expensive, involving a combination of mechanical and chemical treatments. There are no known effective biological control methods (National Invasive Species Information Center 2021).

Phenology. A yellowish colored grass that occurs in dense patches in open, soil disturbed areas. It is distinguished from other grasses by its yellow leaf color, and density of leaf architecture. It is extensive along spoil banks, trail edges and parking areas of the project area. Similar phenological species include wiregrass (*Aristida beyrichiana*), bluestem grasses (*Schizachyrium scoparium*) and various wetland species such as sedges (*Cyperus*

spp.), Saltmeadow Cordgrass (*Spartina patens*) and Black Needle Rush (*Juncus roemerianus*).

Ecological Threat. Cogon Grass forms dense stands that crowd out native species (Lippincott 1997). It is of particular concern because it reproduces both sexually and asexually being able to spread via seed dispersal and through underground rhizome growth. It is said that a piece of rhizome about a fingernail in size is all that is needed to allow it to spread into a new site. Vectors of transmission include equipment that contain small bits of rhizome that can carry it from site to site. It is also fire-tolerant and shows a favorable growth response when growing in disturbed soils. Thus, soil disturbed areas are possible corridors for its spread at xxxxx xxxxx xxxxx.

Camphor Tree (*Cinnamomum camphora*) is native to China south of the Yangtze River, Taiwan, southern Japan, Korea, India and Vietnam, and has been introduced to many other countries. It grows up to 20–30 m (66–98 ft) tall. The leaves have a glossy, waxy appearance and smell of camphor when crushed. In spring, it produces bright green foliage with masses of small white flowers. It produces clusters of black, berry-like fruit around 1 cm (0.39 in) in diameter. Its pale bark is very rough and fissured vertically.

Phenology. It is an evergreen tree with many small olive-colored leaves. Leaf senescence occurs in late fall-early winter with some leaves turning a slight reddish color in late fall and early winter. Species with similar phenological signatures include wax myrtle (*Morella cerifera*), red bay (*Persea borbonia*) and sweet bay (*Magnolia virginiana*) however, Camphor Tree is distinguished from these species by leaf shape, size, density, color and tree architecture.

Ecological Threat. Introduced to the contiguous United States around 1875, Camphor Tree has become naturalized in portions of Alabama, California, Florida, Georgia, Hawaii, Louisiana, Mississippi, North Carolina, Texas, and South Carolina. It has been declared a Category I invasive species in Florida (Wikipedia 2021). Camphor trees are spread into natural areas by seeds. Mature trees can produce up to 100,000 seeds each year, which are consumed by a variety of birds and spread to other areas. Camphor tree generally invade open or disturbed areas. These areas are particularly vulnerable to invasion (Center for Aquatic and Invasive Plants 2021).

UAV Flights

Invasive plant species can alter the composition, structure and functioning of terrestrial ecosystems, especially in a place with a fragile ecosystem, like xxxxx xxxxx xxxxx Estuarine Research Reserve (the Reserve) located in Pascagoula, MS. To support the conservation of the Reserve and to optimize resources for the management of these invasive plants, NERR management need to know their distribution and abundance. Therefore, Alpha Eagle Technology created a high-resolution map of the distribution of three invasive species within the selected project area. To achieve this, AET, utilized state of the art drone and payload sensors for the data capture which included, both RGB and Multispectral payloads to capture imagery for analysis of invasive species at the Reserve. The total area surveyed was approximately 452 acres which was flown using a Matrice 210 RTK with a Red Edge Multispectral (5 band) camera MX and a Zenmuse X5S. A D-RTK 2 High precision GNSS mobile station was established to improve the overall absolute accuracy of the data capture. The RTK drone platform utilized has 1 cm+1 ppm (Horizontal) 1.5 cm + 1 ppm (Vertical) accuracy. To get the best performance, the height of the UAV was maintained at the altitude of 106.68m (350 ft.). Horizontal and vertical overlapping was set at 75% with a resolution of 0.91in/px and was flown during the hours of 10:00am to 3:00pm on partly cloudy and sunny days.

In addition, AET collected imagery data during the growing season (mid-August) to capture preliminary signature data for all three species. A second data capture was flown in early November when the leaves of Chinese Tallow trees exhibited a red color signature and the grass blades of Cogon grass become more yellow in color as they cured in the fall (Figure 6 below).

UA Software and Analysis

We spent a considerable effort to understand how much vegetation is available in any given pixel. We employed NDVI (Normalized Differential Vegetation Index) which is essential to many of our projects for the purpose of creating vegetation indices. Remote sensing terms, a Vegetation Index is a single number that quantifies vegetation within a pixel. It is extracted by mathematically combining several spectral bands based on the physical parameters of vegetation, primarily the fact that it absorbs more light in the red (R) than in the near-infrared (NIR) region of the spectrum. These indices can be used to ascertain information such as vegetation presence, photosynthetic activity, and plant health. To do this, we used a basic formula to calculate the indices using a bracketing

system that we entered into the Raster calculator within the QGIS software. Once we noted the relevant band combinations for data from QGIS, we then created a classification model based on the vegetation index of each species (Figure 6). However, we were not able to differentiate each species to our satisfaction using this method.

Figure 6



Note: We then uploaded 5500 UAV images into Drone Deploy software. This then created an Orthomosaic map which was digitized for the presence of the three species.

Field Data Collection and Ground Control Points

AET then used field surveys to identify and collect spatial location data (ground control points) for each of the three species. Four field survey visits were conducted over the course of the project to collect spatial location data for more than 30 ground control points for each of the three species throughout the project area. A Garmin 72S GPS unit ($\pm 16\text{ft}$) was used to collect the field survey data (Appendix 1).

Spatial location data collected from the field surveys was overlaid onto the orthomosaic imagery using ArcGIS (v. 10.8). A uniquely recognizable signature for each species was determined visually by reviewing the field data in concert with the orthomosaic imagery product. Once unique signatures were identified two additional field surveys were conducted to verify ground control points back in the field. Camphor Tree was verified in over 80% of the points, Cogon Grass was verified in $>67\%$ of the points and Chinese Tallow Tree was verified in over 50% (Appendix 1). This information was used in the digitization process in refinement of species identification and location.

Figure 7. Imagery from UAV showing unique signatures for each of the three invasive species.



- Camphor Tree**
 Lat 30.4210900, Long -88.4361508
- Cogon Grass**
 Lat 30.4209755, Long -88.4361132
- Tallow Tree**
 Lat 30.4209223, Long -88.4359905

Accuracy Report

Alpha Eagle Technology / XXXXXX

350ft

Captured: Dec 03, 2021, Processed: Dec 14, 2021



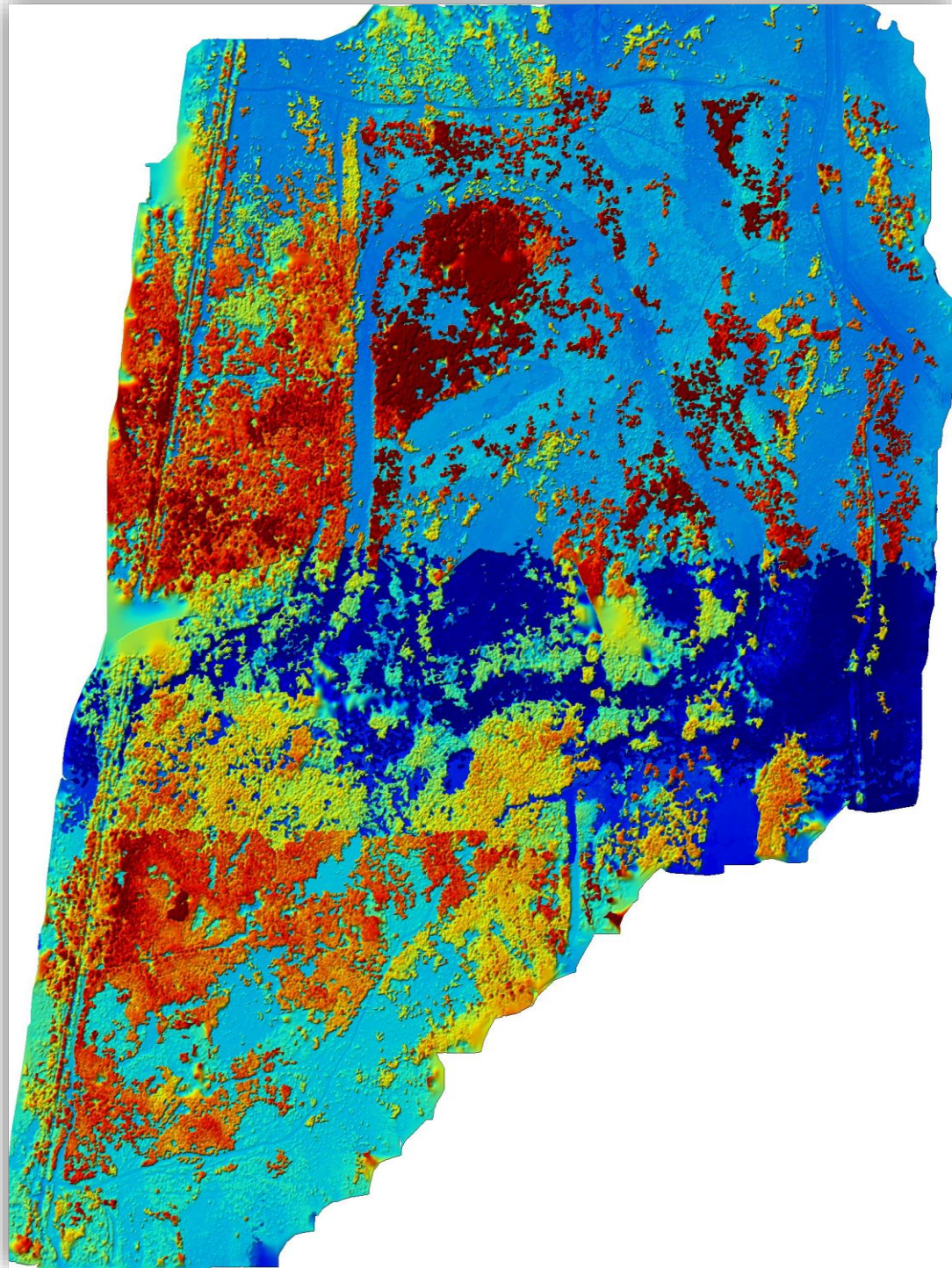
Map Details Summary

Project Name	Alpha Eagle Draft - AlphaEagle_350ft
Photogrammetry Engine	DroneDeploy Proprietary
Date Of Capture	Dec 03, 2021
Date Processed	Dec 14, 2021
GSD Orthomosaic (GSD DEM)	0.91in/px (DEM 3.64in/px)
Area Bounds (Coverage)	46923997.99ft2 (62%)
Image Sensors	DJI - FC6520
Average GPS Trust	0.10ft

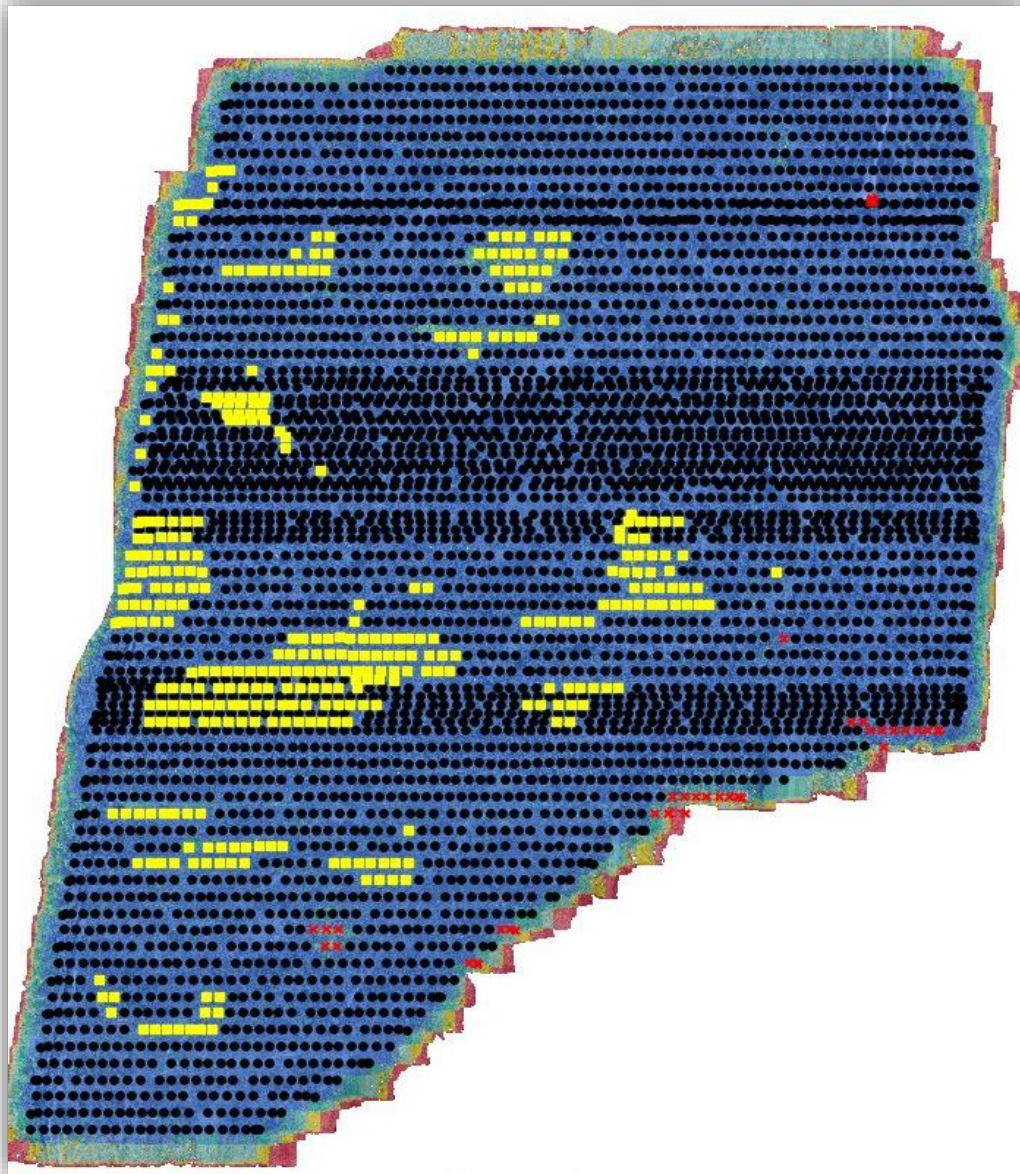
Quality & Accuracy Summary

Image Quality	High texture images
Median Shutter Speed	1/200
Images Uploaded (Aligned %)	4528 (91%)
Camera Optimization	0.02% variation from reference intrinsics





Dataset Quality Review / Orthomosaic Coverage



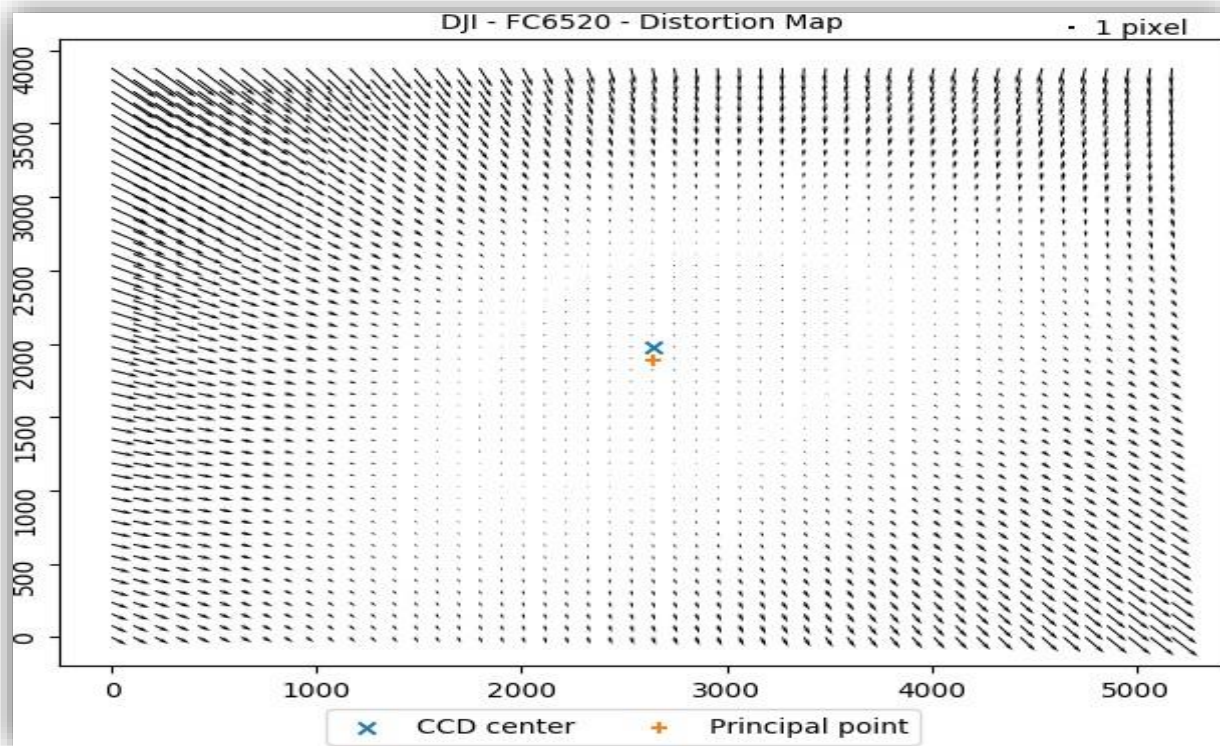
Sensor(s) Used	DJI - FC6520
Image Count (by sensor)	4528
Image Resolution	5280x3956 (~21MP)
Orthomosaic coverage (% of area of interest)	62.58
Average Orthomosaic Image Density within Structured Area	15 images/pixel
Median Shutter Speed	1/200

Structure from Motion

Aligned Cameras	91% 4127/4528
RMSE of Camera GPS Location	X 1.16ft Y 1.07ft Z 0.49ft RMSE 0.95ft

Camera Calibration

Camera Optimization	0.02% variation from reference intrinsics
---------------------	---

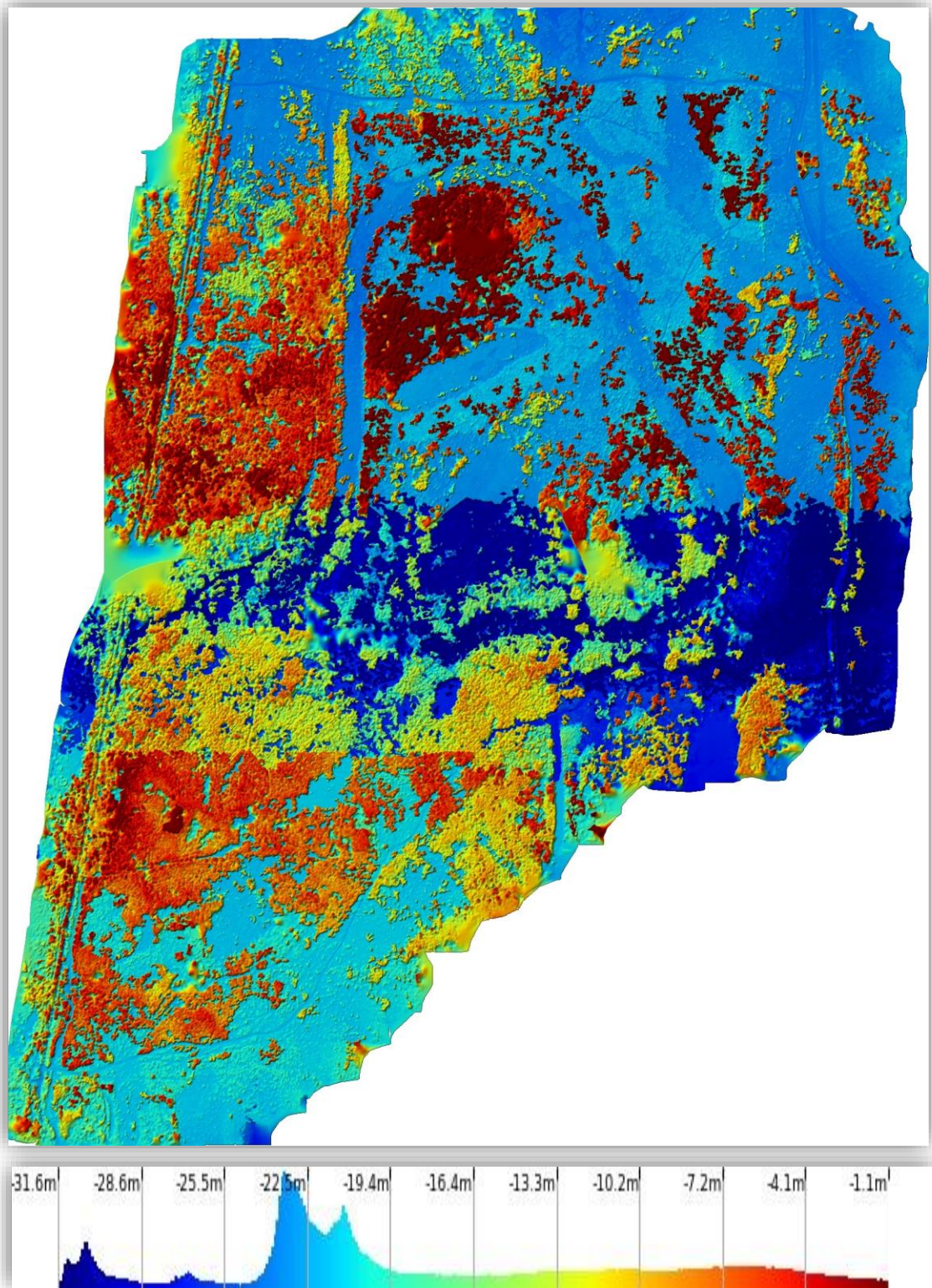


Densification and Meshing

Processing Mode Quality	High
Nadir Images	100% Include oblique or horizontal images to improve reconstructions of man-made structures.
Oblique images	0%
Horizontal images	0%
Total Points	35.8 million
Point Cloud Density	1.22 points/ft ²
Mesh Triangles	4.0 million

Digital Elevation Model

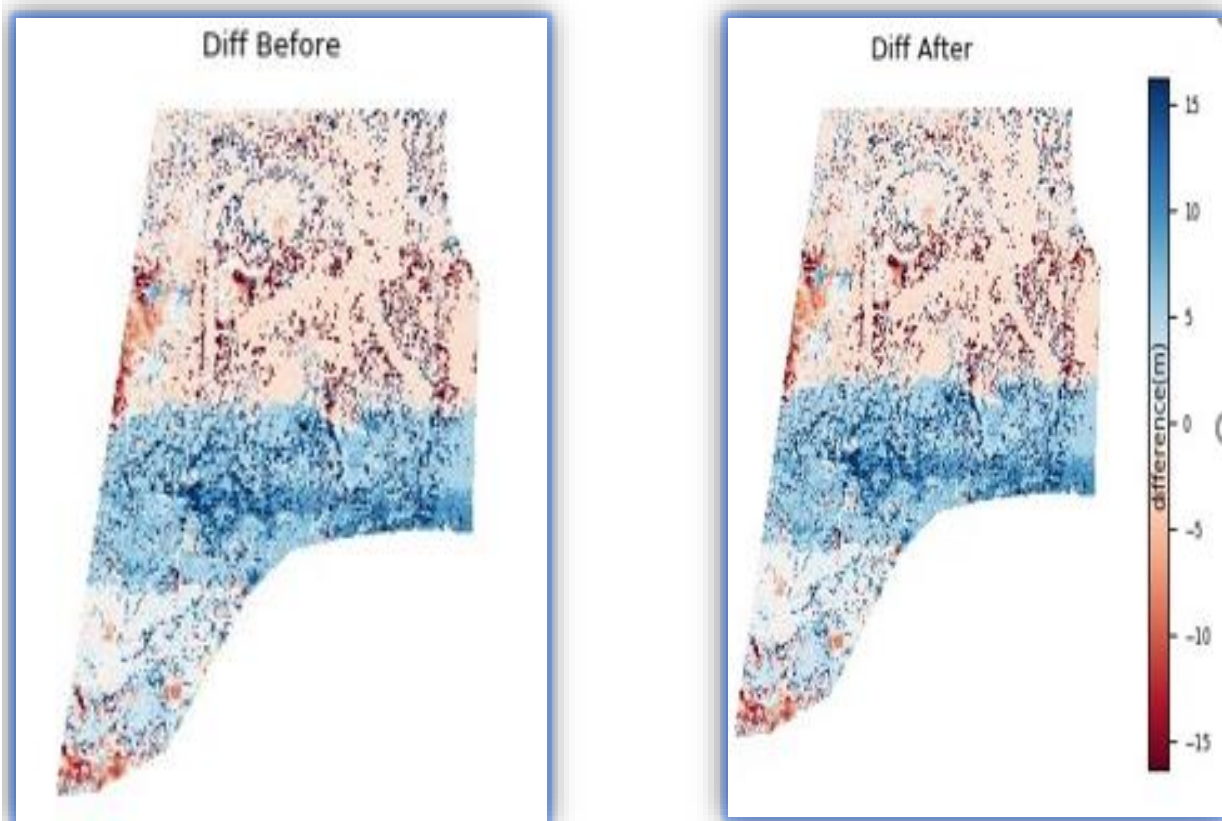
Mode	Generated from Mesh
DEM GSD	DEM 3.64in/px
Relative/Absolute	Absolute Altitude



Automatic Map Alignment

In order to improve map to map benchmarking and comparison, and align project overlays, maps are automatically aligned with previous maps in the same location.

Aligned with	Alpha Eagle Draft - Alpha Eagle Draft - Nov 15, 2021
Translation	X -1.98ft Y 8.78ft Z -24.81ft
Scale	X 100.05% Y 99.87%
Rotation	Z -0.01°



This map and report were produced with proprietary cloud photogrammetry software from Drone Deploy. [t](#)

Mapping Methods

Once the unique signature was confirmed for each species, the entire project area orthomosaic image was gridded out into blocks (20 rows X 20 columns in ArcGIS; total of 291 blocks of 79X88m across the entire project area) (Figure 8 map of grid). Each block was then digitized for the presence or absence of each invasive species based on its unique signature. Point shapefiles were created for the distribution of each species based on the digitized data. Maps were created for each species distribution in ArcGIS.

Figure 8. 20 X 20 Project Grid Map,



Species Distribution Maps

Figure 9. Distribution and abundance map of Chinese Tallow Tree, xxxxx xxxxx xxxxx. December 20, 2021.

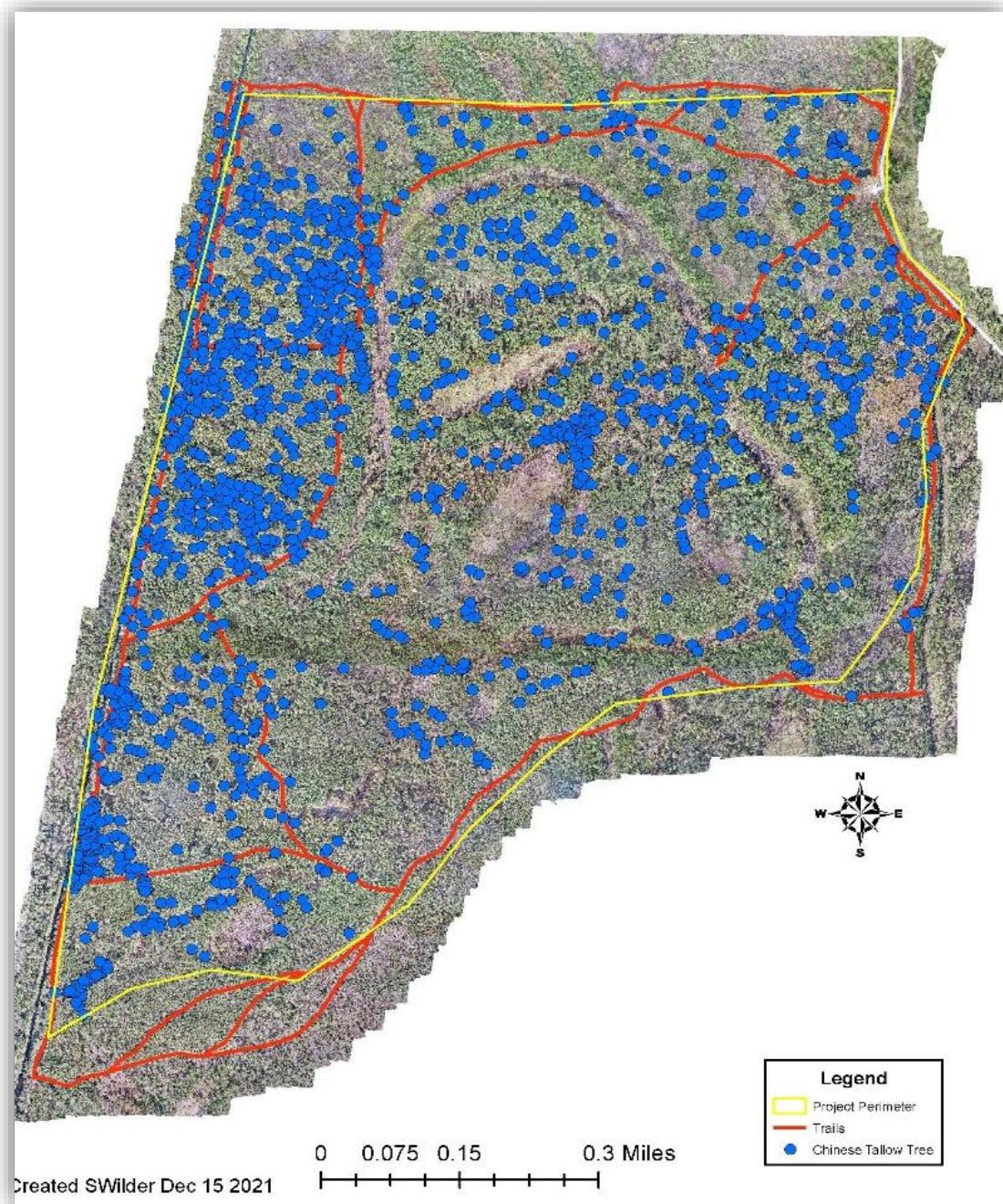


Figure 10. Distribution and abundance map of Cogon Grass, xxxxx xxxxx xxxxx.
December 20, 2021.

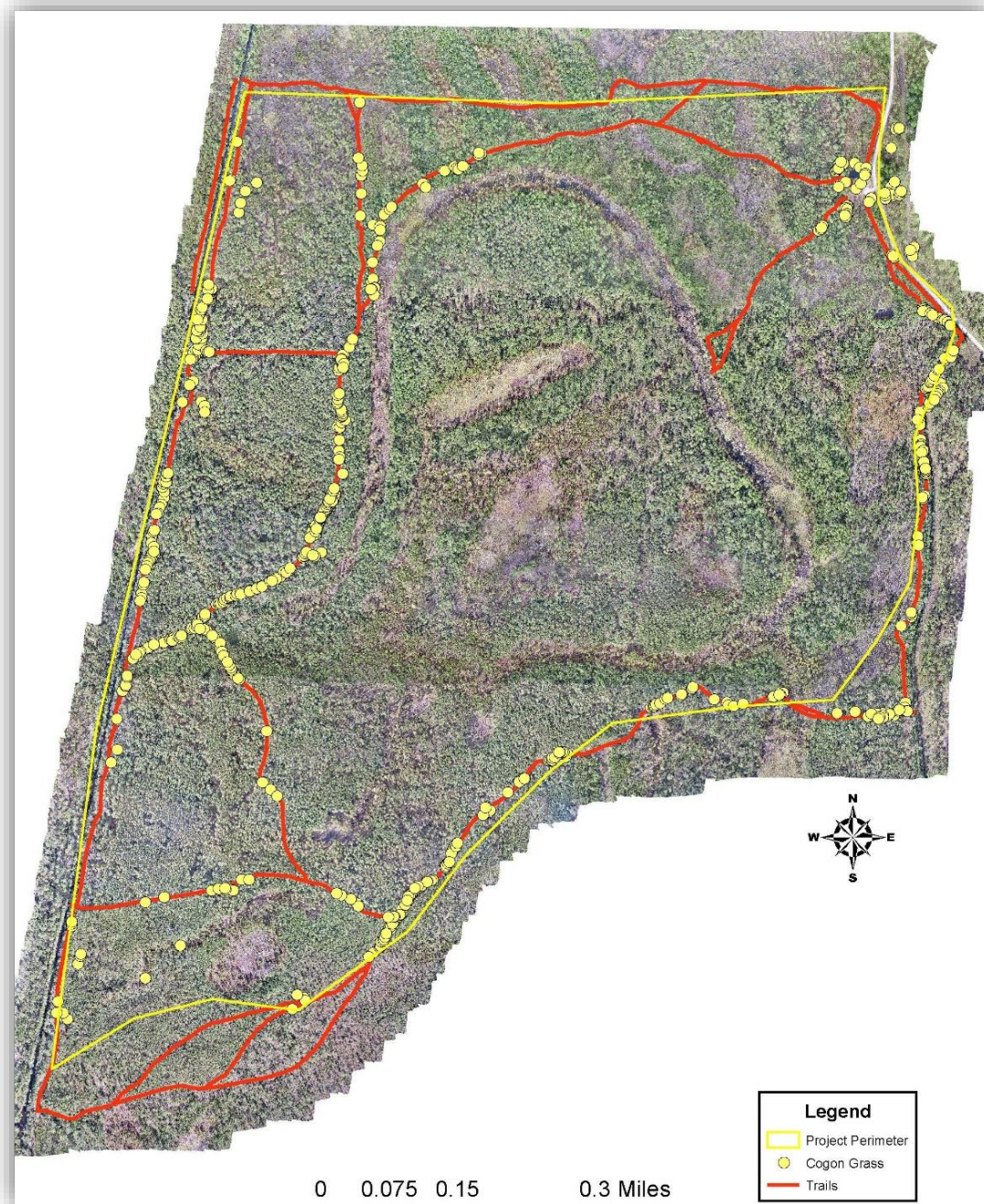
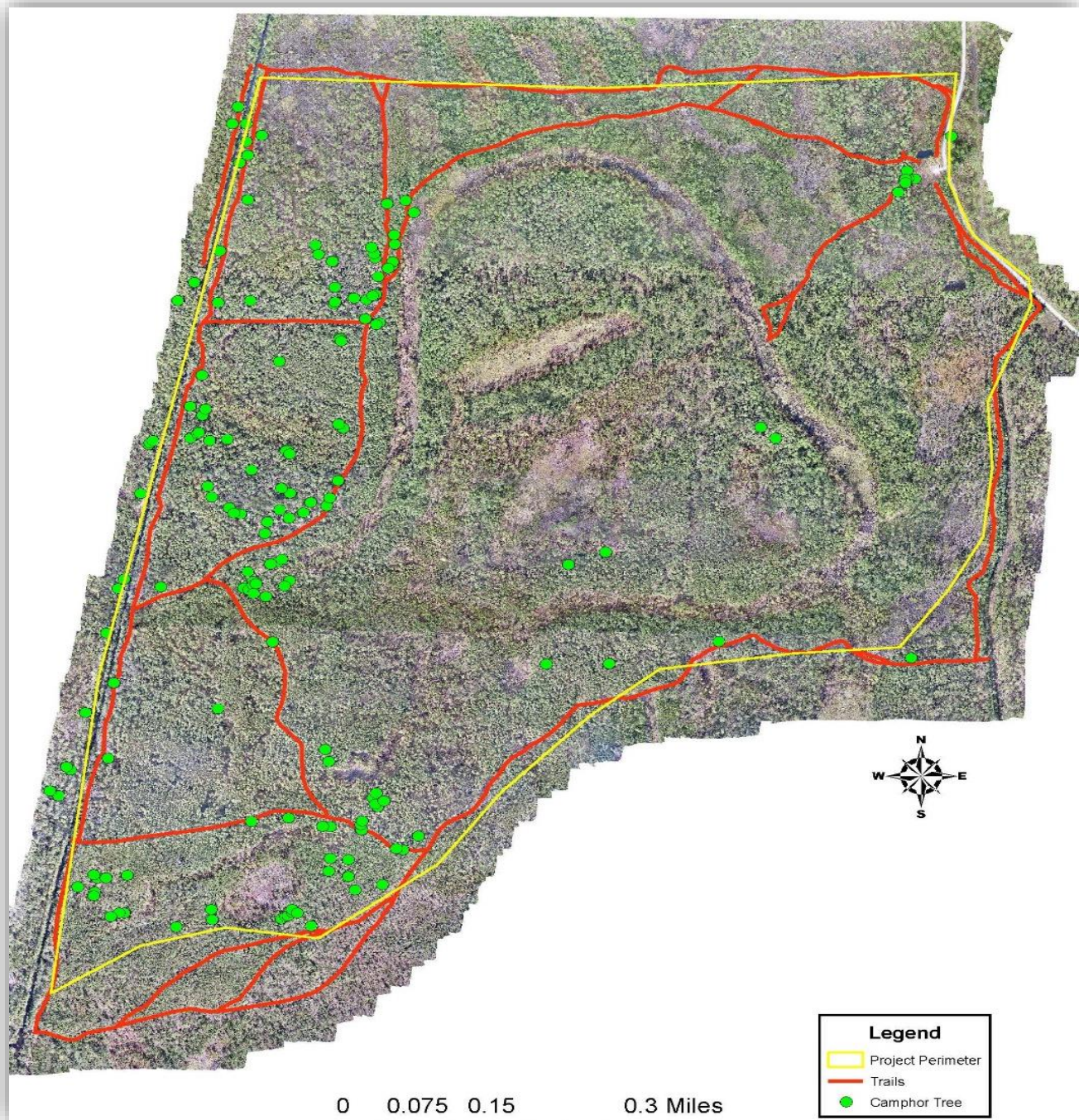


Figure 11. Distribution and abundance map of Camphor Tree, xxxxx xxxxx xxxxx.
December 20, 2021.



Results

Across the entire project area, a total of 1790 points were identified for Chinese Tallow Tree, 734 points were identified for Cogon Grass and 168 points were identified for Camphor Tree. Chinese Tallow Tree was the most abundant of the three species throughout the area. Cogon Grass and Camphor Trees were restricted to heavily disturbed areas like fire plow lines, old trails and roads, spoil banks from man-made ditches and ponds as well as parking areas.

As a result of the mapping effort, two of the three species, Camphor Tree and Cogon Grass, showed unique signatures that were able to be easily mapped and digitized however, the Chinese Tallow Tree proved to be more of a challenge. Species such as red maple and cypress trees also exhibited similar red leaf color phenology to the Chinese Tallow Tree during the fall when the UAV imagery data was collected. Therefore, the resulting distribution map of Chinese Tallow Trees most likely overestimates the amount of Chinese Tallow Trees present on the project area and may include both red maple and cypress trees that were too difficult to distinguish from Chinese Tallow Tree on the imagery.

Only large reproductive individuals (greater than 15 feet tall) of Chinese Tallow Trees and Camphor Tree were able to be detected using this method. It was noted from field observations that many hundreds of small Chinese Tallow trees (less than 6 feet tall) were found growing throughout the area but were not detectable on the imagery since they were growing below taller tree canopies or too small to detect on the orthomosaic imagery. However, the smaller trees, for the most part, are located adjacent to large reproducing individual trees. Fortunately, these many smaller saplings of Chinese Tallow Trees did not show signs of reproduction at this time but may reach reproductive maturity within the next few years.

Large patches of Cogon Grass, greater than 1 meter in length, were detectable in the mapping effort but smaller patches were not easily detectable from the imagery.

The significance of the soil disturbance due to roads, trails, plow fire lines and spoil banks throughout the project area plays a major role in the extent of invasive species presence across the landscape. These areas of soil disturbance act as conduits and corridors for further expansion of invasive species. In addition, in the absence of prescribed burning in

the last five years, invasive species have expanded and continue to invade the project area as evident from the saplings observed in the area.

Literature Cited

Bryson, C.T. and R. Carter. 1993. [Cogon grass, *Imperata cylindrica*, in the United States \(link is external\)](#). Weed Technology 7:1005-1009.

Chesser, Zack B., and John D. Byrd. *Cogon grass inventory and management*. No. FHWA/MS-DOT-RD-07-178. Mississippi State University, 2007.

Clewell, A.F. and C. A. Raymond. 1995. *Preliminary Characterization of Vegetation at Mississippi Sandhill Crane National Wildlife Refuge*. U.S. Fish and Wildlife Service, Jackson, Mississippi.

Cowardin, Lewis M. 1979. *Classification of wetlands and deepwater habitats of the United States*. Washington, D.C.: Fish and Wildlife Service, U.S. Dept. of the Interior.

Dozier, H., J.F. Gaffney, S.K. McDonald, E.R. Johnson, and D.G. Shilling. 1998. [Cogon grass in the United States: history, ecology, impacts, and management \(link is external\)](#). Weed Technology 737-743.

xxxxx xxxxx xxxxx website. 2021. Accessed. November 21, 2021.

MARIS. Mississippi Automated Resource Information System. 2021. https://www.maris.state.ms.us/HTML/DATA/data_Geoscience/CountySoils.html#gsc.tab=0. Accessed November 21, 2021.

Center for Aquatic and Invasive Plants website. 2021. <https://plants.ifas.ufl.edu/plant-directory/cinnamomum-camphora/>. Accessed November 21, 2021.

Lippincott, C.L. 1997. *Ecological consequences of *Imperata cylindrica* (cogon grass) invasion in Florida sandhill*. PhD dissertation, University of Florida.

Moorehead, D.J., C.T. Barger, and G.K. Douce. 2007. [Cogon grass distribution and spread prevention \(PDF | 213 KB\)\(link is external\)](#). In: N.J. Loewenstein and J.H. Miller (Eds.), *Proceedings of the Regional Cogon grass Conference: A Cogon grass Management Guide* (pp. 24-27). U.S. Forest Service.

National Invasive Species Information Center, USDA website.2021.

<https://www.invasivespeciesinfo.gov/terrestrial/plants/cogongrass#cit>. Accessed Nov 22, 2021

Tabor, P. 1949. Cogon grass, *Imperata cylindrica* (L.) Beauv., in the southeastern United States. Agronomy Journal 41:270.

Texas Invasive Species Institute. Website. 2021.

<http://www.tsusinvasives.org/home/database/triatica-sebifera>. Accessed November 21, 2021.

USDA.NRCS. 2006. Soil Survey of Jackson County, Mississippi.417 pp.

USFWS. 2008. Comprehensive Conservation Plan. xxxxx xxxxx xxxxx. 164 pp.

Wikipedia website. 2021. Accessed November 22, 2021.

xxxxx xxxxx xxxxx Fire. 2016. Burned Area Rehabilitation Plan, xxxxx xxxxx xxxxx Wildlife Refuge. USFWS.20 pp.

Appendix 1. Table of field verification data

Species	Plant ID	Field Notes	Verified
Camphor	CAM05	wax myrtle	N
Camphor	CAM07	water oak/ red bay tree	N
Camphor	CAM08	water oak/ red bay tree	N
Camphor	CAM09	bay	N
Camphor	CAM105	sweet bay	N
Camphor	CAM106	wax myrtle	N
Camphor	CAM111	red bay	N
Camphor	CAM01	Camphor 40ft	Y
Camphor	CAM02	Camphor small tree <15ft	Y
Camphor	CAM03	Camphor	Y
Camphor	CAM04	Camphor >65 ft multiple stems	Y
Camphor	CAM06	camphor >30 ft	Y
Camphor	CAM10	camphor 30ft	Y
Camphor	CAM100	camphor with cogon below	Y
Camphor	CAM101	Camphor	Y
Camphor	CAM102	Camphor	Y
Camphor	CAM103	Camphor	Y
Camphor	CAM104	camphor	Y
Camphor	CAM107	camphor	Y
Camphor	CAM108	camphor	Y
Camphor	CAM109	camphor	Y
Camphor	CAM110	camphor	Y
Camphor	CAM112	camphor	Y
Camphor	CAM114	camphor	Y
Camphor	CAM115	camphor	Y
Camphor	CAM116	camphor	Y
Camphor	CAM117	camphor	Y
Camphor	CAM118	camphor	Y
Camphor	CAM12	camphor 25ft	Y
Camphor	CAM13	camphor 65 ft multiple stems	Y
Camphor	CAM14	camphor 11ft	Y
Camphor	CAM16	camphor 45ft	Y
Camphor	CAM19	camphor 65ft multiple stems	Y

Camphor	CAM20	Camphor	Y
Camphor	CAM21	Camphor on edge of old road	Y
Cogon	COG01	not cogon	N
Cogon	COG100	blue stem grass	N
Cogon	COG101	panic grass	N
Cogon	COG102	spartina patens	N
Cogon	COG110	spartina	N
Cogon	COG111	spartina	N
Cogon	COG112	spartina	N
Cogon	COG113	spartina	N
Cogon	COG114	spartina	N
Cogon	COG115	little bluestem	N
Cogon	COG120	spartina	N
Cogon	COG02	cogon patch in parking area	Y
Cogon	COG103	cogon	Y
Cogon	COG104	cogon	Y
Cogon	COG105	cogon	Y
Cogon	COG106	cogon	Y
Cogon	COG107	cogon	Y
Cogon	COG108	cogon	Y
Cogon	COG109	cogon	Y
Cogon	COG116	cogon	Y
Cogon	COG117	cogon	Y
Cogon	COG118	cogon	Y
Cogon	COG119	cogon	Y
Cogon	COG121	cogon	Y
Cogon	COG122	cogon	Y
Cogon	COG123	cogon	Y
Cogon	COG124	cogon	Y
Cogon	COG125	cogon	Y
Cogon	COG126	cogon	Y
Cogon	COG127	cogon	Y
Cogon	COG3	cogon	Y
Cogon	COG4	cogon	Y
Cogon	COG5	cogon	Y
Tallow	TAL100	not tallow	N

Tallow	TAL103	red maple	N
Tallow	TAL104	water oak	N
Tallow	TAL105	titi	N
Tallow	TAL106	red maple	N
Tallow	TAL110	red maple	N
Tallow	TAL112	red maple	N
Tallow	TAL113	red maple	N
Tallow	TAL114	red maple	N
Tallow	TAL115	not tallow	N
Tallow	TAL12	cypress?	N
Tallow	TAL16	not sure	N
Tallow	TAL21	cogon patch not tallow	N
Tallow	TAL22	cypress	N
Tallow	TAL5	cypress?	N
Tallow	TAL1	tallow	Y
Tallow	TAL10	tallow	Y
Tallow	TAL101	cypress	Y
Tallow	TAL102	small tallow	Y
Tallow	TAL107	tallow	Y
Tallow	TAL108	tallow	Y
Tallow	TAL109	tallow	Y
Tallow	TAL111	tallow	Y
Tallow	TAL15	tallow 6ft? Could be gum	Y
Tallow	TAL17	tallow	Y
Tallow	TAL18	tallow and cypress	Y
Tallow	TAL19	tallow	Y
Tallow	TAL2	tallow 15ft	Y
Tallow	TAL20	tallow	Y
Tallow	TAL23	tallow	Y
Tallow	TAL25	Tallow	Y
Tallow	TAL26	Tallow	Y
Tallow	TAL3	tallow 20ft	Y
Tallow	TAL6	tallow 10 ft	Y
Tallow	TAL9	tallow 7ft	Y

Appendix 2 is the distribution of the invasive species by coordinates, Chines Tallow, Cogon Grass, Camphor Tree. All coordinates are in UTM coordinate system, WGS84.

Chines Tallow Tree



FID	POINT_X	POINT_Y	Species
0	362233.54	3366029.26	Chinese Tallow Tree
1	362262	3366034	Chinese Tallow Tree
2	362271	3366055	Chinese Tallow Tree
3	362286.94	3366126.46	Chinese Tallow Tree
4	362266.39	3366202.66	Chinese Tallow Tree
5	362312.57	3366253.62	Chinese Tallow Tree
6	362024.9837	3366155.436	Chinese Tallow Tree
7	362019.8298	3366128.833	Chinese Tallow Tree
8	363119.8953	3366345.669	Chinese Tallow Tree
9	362703.14	3366333.47	Chinese Tallow Tree
10	362697.06	3366346.52	Chinese Tallow Tree
11	361787.2322	3364689.432	Chinese Tallow Tree
12	361792.2262	3364701.669	Chinese Tallow Tree
13	361768.3903	3364708.268	Chinese Tallow Tree
14	361773.4174	3364708.533	Chinese Tallow Tree
15	361776.9231	3364712.436	Chinese Tallow Tree
16	361784.0669	3364718.389	Chinese Tallow Tree
17	361781.7517	3364710.12	Chinese Tallow Tree
18	361784.133	3364722.027	Chinese Tallow Tree
19	361792.2028	3364723.217	Chinese Tallow Tree
20	361792.6328	3364725.896	Chinese Tallow Tree
21	361789.8639	3364716.784	Chinese Tallow Tree
22	361797.1241	3364724.467	Chinese Tallow Tree
23	361774.7932	3364709.322	Chinese Tallow Tree
24	361770.8244	3364711.174	Chinese Tallow Tree
25	361787.1801	3364682.571	Chinese Tallow Tree
26	361795.5807	3364667.952	Chinese Tallow Tree
27	361782.4838	3364690.045	Chinese Tallow Tree
28	361812.4148	3364738.839	Chinese Tallow Tree
29	361809.2398	3364739.633	Chinese Tallow Tree
30	361817.6007	3364738.429	Chinese Tallow Tree
31	361813.2747	3364735.532	Chinese Tallow Tree
32	361808.155	3364733.031	Chinese Tallow Tree

33	361804.9403	3364733.706	Chinese Tallow Tree
34	361826.5304	3364744.025	Chinese Tallow Tree
35	361827.086	3364745.414	Chinese Tallow Tree
36	361818.831	3364740.453	Chinese Tallow Tree
37	361837.3386	3364751.473	Chinese Tallow Tree
38	361835.8173	3364758.286	Chinese Tallow Tree
39	361823.7258	3364765.017	Chinese Tallow Tree
40	361910.669	3364832.88	Chinese Tallow Tree
41	361901.7261	3364833.885	Chinese Tallow Tree
42	361905.589	3364830.975	Chinese Tallow Tree
43	361918.342	3364846.056	Chinese Tallow Tree
44	361903.4194	3364822.402	Chinese Tallow Tree
45	361887.4386	3364829.235	Chinese Tallow Tree
46	362052.9265	3364875.568	Chinese Tallow Tree
47	362120.7526	3364871.983	Chinese Tallow Tree
48	362098.263	3364894.803	Chinese Tallow Tree
49	362137.5537	3364881.772	Chinese Tallow Tree
50	362108.9125	3364887.328	Chinese Tallow Tree
51	362043.2503	3364931.62	Chinese Tallow Tree
52	362038.5671	3364922.849	Chinese Tallow Tree
53	362056.3868	3364928.167	Chinese Tallow Tree
54	362036.3587	3364905.619	Chinese Tallow Tree
55	362026.675	3364909.191	Chinese Tallow Tree
56	362053.1863	3364907.167	Chinese Tallow Tree
57	362154.3398	3365536.454	Chinese Tallow Tree
58	361801.3827	3364729.49	Chinese Tallow Tree
59	361795.8794	3364730.443	Chinese Tallow Tree
60	361746.1508	3364708.575	Chinese Tallow Tree
61	362006.1574	3364773.619	Chinese Tallow Tree
62	361983.7736	3364787.378	Chinese Tallow Tree
63	361811.8479	3364828.009	Chinese Tallow Tree
64	361798.094	3364807.57	Chinese Tallow Tree
65	361874.015	3364819.618	Chinese Tallow Tree
66	361930.8567	3364871.494	Chinese Tallow Tree
67	361948.1605	3364872.606	Chinese Tallow Tree

68	361954.8588	3364839.252	Chinese Tallow Tree
69	361951.7235	3364836.593	Chinese Tallow Tree
70	361928.4401	3364835.588	Chinese Tallow Tree
71	361927.2495	3364827.174	Chinese Tallow Tree
72	361914.6156	3364833.855	Chinese Tallow Tree
73	361895.8743	3364859.1	Chinese Tallow Tree
74	361970.3008	3364841.461	Chinese Tallow Tree
75	362036.5487	3364867.031	Chinese Tallow Tree
76	362033.7441	3364877.191	Chinese Tallow Tree
77	362018.7157	3364874.228	Chinese Tallow Tree
78	362016.2815	3364869.359	Chinese Tallow Tree
79	362019.2846	3364866.634	Chinese Tallow Tree
80	361993.1701	3364858.101	Chinese Tallow Tree
81	362141.2418	3364819.865	Chinese Tallow Tree
82	362134.1774	3364824.628	Chinese Tallow Tree
83	362134.6668	3364857.622	Chinese Tallow Tree
84	362146.0373	3364884.477	Chinese Tallow Tree
85	362176.5917	3364877.308	Chinese Tallow Tree
86	362182.611	3364863.351	Chinese Tallow Tree
87	362257.4944	3364816.676	Chinese Tallow Tree
88	361777.0996	3364907.54	Chinese Tallow Tree
89	361778.0587	3364897.883	Chinese Tallow Tree
90	361782.2259	3364903.902	Chinese Tallow Tree
91	361770.3196	3364907.791	Chinese Tallow Tree
92	361782.0142	3364920.134	Chinese Tallow Tree
93	361788.4436	3364914.102	Chinese Tallow Tree
94	361790.3486	3364912.276	Chinese Tallow Tree
95	361798.0877	3364925.413	Chinese Tallow Tree
96	361800.6674	3364929.104	Chinese Tallow Tree
97	361804.398	3364929.977	Chinese Tallow Tree
98	361802.5724	3364921.603	Chinese Tallow Tree
99	361797.1749	3364916.562	Chinese Tallow Tree
100	361779.9505	3364928.707	Chinese Tallow Tree
101	361776.9342	3364927.238	Chinese Tallow Tree
102	361774.9895	3364922.039	Chinese Tallow Tree

103	361775.2276	3364919.34	Chinese Tallow Tree
104	361777.3311	3364917.277	Chinese Tallow Tree
105	361784.117	3364939.183	Chinese Tallow Tree
106	361815.193	3364930.016	Chinese Tallow Tree
107	361807.3746	3364941.089	Chinese Tallow Tree
108	361813.6055	3364947.479	Chinese Tallow Tree
109	361807.5333	3364949.582	Chinese Tallow Tree
110	361810.4702	3364949.662	Chinese Tallow Tree
111	361787.6895	3364948.59	Chinese Tallow Tree
112	361811.9783	3364953.114	Chinese Tallow Tree
113	361794.2777	3364958.909	Chinese Tallow Tree
114	361787.5506	3364953.915	Chinese Tallow Tree
115	361806.766	3364962.845	Chinese Tallow Tree
116	361804.9602	3364953.809	Chinese Tallow Tree
117	361807.7384	3364968.791	Chinese Tallow Tree
118	361804.2657	3364965.451	Chinese Tallow Tree
119	361803.2404	3364969.519	Chinese Tallow Tree
120	361801.5868	3364967.964	Chinese Tallow Tree
121	361798.3787	3364972.859	Chinese Tallow Tree
122	361792.5579	3364968.493	Chinese Tallow Tree
123	361803.6042	3364973.454	Chinese Tallow Tree
124	361816.8996	3364972.198	Chinese Tallow Tree
125	361811.178	3364973.587	Chinese Tallow Tree
126	361812.0048	3364971.768	Chinese Tallow Tree
127	361794.41	3364974.215	Chinese Tallow Tree
128	361783.4959	3364971.602	Chinese Tallow Tree
129	361785.2487	3364965.484	Chinese Tallow Tree
130	361778.6672	3364961.449	Chinese Tallow Tree
131	361778.2042	3364954.57	Chinese Tallow Tree
132	361784.7526	3364951.196	Chinese Tallow Tree
133	361784.9842	3364958.803	Chinese Tallow Tree
134	361881.8549	3364926.394	Chinese Tallow Tree
135	361876.894	3364923.549	Chinese Tallow Tree
136	361857.2486	3364932.281	Chinese Tallow Tree
137	361824.9032	3364928.973	Chinese Tallow Tree

138	361820.2069	3364930.362	Chinese Tallow Tree
139	361867.3028	3364946.634	Chinese Tallow Tree
140	361869.4856	3364941.475	Chinese Tallow Tree
141	361859.696	3364945.907	Chinese Tallow Tree
142	361897.73	3364933.537	Chinese Tallow Tree
143	361856.8121	3364957.271	Chinese Tallow Tree
144	361842.0681	3364970.574	Chinese Tallow Tree
145	361833.1384	3364963.959	Chinese Tallow Tree
146	361833.1384	3364963.959	Chinese Tallow Tree
147	361833.1384	3364963.959	Chinese Tallow Tree
148	361820.1077	3364970.475	Chinese Tallow Tree
149	361877.5157	3364935.556	Chinese Tallow Tree
150	361886.5116	3364935.9	Chinese Tallow Tree
151	361876.9588	3364964.093	Chinese Tallow Tree
152	361873.7838	3364968.961	Chinese Tallow Tree
153	361876.1121	3364961.341	Chinese Tallow Tree
154	361900.5028	3364913.384	Chinese Tallow Tree
155	361898.5184	3364909.217	Chinese Tallow Tree
156	361906.6544	3364895.26	Chinese Tallow Tree
157	361906.3236	3364897.906	Chinese Tallow Tree
158	361903.3471	3364910.407	Chinese Tallow Tree
159	361897.4601	3364902.8	Chinese Tallow Tree
160	361902.884	3364903.33	Chinese Tallow Tree
161	361902.1564	3364892.812	Chinese Tallow Tree
162	361958.2303	3364969.372	Chinese Tallow Tree
163	362041.8653	3364907.34	Chinese Tallow Tree
164	362047.3201	3364954.332	Chinese Tallow Tree
165	362086.0393	3364911.966	Chinese Tallow Tree
166	362128.946	3364963.351	Chinese Tallow Tree
167	362207.0225	3364934.668	Chinese Tallow Tree
168	362216.456	3364928.294	Chinese Tallow Tree
169	362262.442	3364918.722	Chinese Tallow Tree
170	362215.883	3364964.826	Chinese Tallow Tree
171	362219.2113	3364969.482	Chinese Tallow Tree
172	361816.6418	3364976.376	Chinese Tallow Tree

173	361815.9274	3364979.512	Chinese Tallow Tree
174	361802.9496	3364978.202	Chinese Tallow Tree
175	361811.7205	3364977.408	Chinese Tallow Tree
176	361799.1396	3364978.083	Chinese Tallow Tree
177	361799.7746	3364988.084	Chinese Tallow Tree
178	361798.8617	3364998.046	Chinese Tallow Tree
179	361802.0368	3364996.657	Chinese Tallow Tree
180	361792.5911	3364998.046	Chinese Tallow Tree
181	361789.0192	3365002.967	Chinese Tallow Tree
182	361813.0302	3364997.768	Chinese Tallow Tree
183	361815.8083	3364990.822	Chinese Tallow Tree
184	361814.3399	3365003.086	Chinese Tallow Tree
185	361808.4661	3365003.007	Chinese Tallow Tree
186	361803.8227	3365010.706	Chinese Tallow Tree
187	361801.9177	3365010.031	Chinese Tallow Tree
188	361798.1077	3365008.523	Chinese Tallow Tree
189	361790.567	3365004.951	Chinese Tallow Tree
190	361792.5448	3365015.895	Chinese Tallow Tree
191	361809.0548	3365016.054	Chinese Tallow Tree
192	361804.6892	3365018.038	Chinese Tallow Tree
193	361816.7542	3365017.244	Chinese Tallow Tree
194	361805.0861	3365020.975	Chinese Tallow Tree
195	361815.8414	3365027.762	Chinese Tallow Tree
196	361788.7533	3365022.663	Chinese Tallow Tree
197	361793.5158	3365033.405	Chinese Tallow Tree
198	361810.8196	3365044.306	Chinese Tallow Tree
199	361814.7355	3365046.211	Chinese Tallow Tree
200	361812.1187	3365056.536	Chinese Tallow Tree
201	361816.7655	3365046.961	Chinese Tallow Tree
202	361813.5376	3365044.897	Chinese Tallow Tree
203	361805.3355	3365041.326	Chinese Tallow Tree
204	361820.6813	3364990.592	Chinese Tallow Tree
205	361844.3616	3364992.047	Chinese Tallow Tree
206	361854.0189	3364994.957	Chinese Tallow Tree
207	361838.3687	3365024.258	Chinese Tallow Tree

208	361824.2929	3365019.813	Chinese Tallow Tree
209	361865.4859	3364988.345	Chinese Tallow Tree
210	361825.6749	3364987.573	Chinese Tallow Tree
211	361829.8818	3364987.851	Chinese Tallow Tree
212	361858.8438	3365022.362	Chinese Tallow Tree
213	362016.8499	3365045.718	Chinese Tallow Tree
214	362050.6108	3365031.854	Chinese Tallow Tree
215	362053.993	3364996.62	Chinese Tallow Tree
216	362060.0476	3365068.64	Chinese Tallow Tree
217	362062.7464	3365001.383	Chinese Tallow Tree
218	362119.6531	3365035.34	Chinese Tallow Tree
219	362162.145	3365018.211	Chinese Tallow Tree
220	362141.7611	3365028.109	Chinese Tallow Tree
221	362237.2538	3364984.856	Chinese Tallow Tree
222	361829.4139	3365110.252	Chinese Tallow Tree
223	361834.097	3365095.29	Chinese Tallow Tree
224	361852.2959	3365099.373	Chinese Tallow Tree
225	361838.3391	3365101.755	Chinese Tallow Tree
226	361851.3589	3365103.018	Chinese Tallow Tree
227	361821.4063	3365139.228	Chinese Tallow Tree
228	361837.7427	3365096.544	Chinese Tallow Tree
229	361920.2466	3365099.979	Chinese Tallow Tree
230	361897.938	3365100.518	Chinese Tallow Tree
231	361925.1626	3365116.495	Chinese Tallow Tree
232	361909.7638	3365114.484	Chinese Tallow Tree
233	361986.591	3365083.675	Chinese Tallow Tree
234	362068.9943	3365099.803	Chinese Tallow Tree
235	362066.9835	3365113.773	Chinese Tallow Tree
236	362061.2685	3365134.833	Chinese Tallow Tree
237	362039.9959	3365085.727	Chinese Tallow Tree
238	362109.3849	3365151.516	Chinese Tallow Tree
239	362125.8155	3365088.492	Chinese Tallow Tree
240	362092.0493	3365071.014	Chinese Tallow Tree
241	362072.4701	3365082.444	Chinese Tallow Tree
242	362090.5676	3365088.159	Chinese Tallow Tree

243	362098.5863	3365095.07	Chinese Tallow Tree
244	362073.7154	3365133.897	Chinese Tallow Tree
245	362057.7875	3365139.242	Chinese Tallow Tree
246	362113.8184	3365102.018	Chinese Tallow Tree
247	362154.6975	3365092.736	Chinese Tallow Tree
248	362480.9998	3365131.691	Chinese Tallow Tree
249	362481.7407	3365139.946	Chinese Tallow Tree
250	362496.2399	3365125.764	Chinese Tallow Tree
251	361822.2403	3365217.752	Chinese Tallow Tree
252	361819.9251	3365209.88	Chinese Tallow Tree
253	361816.4194	3365217.289	Chinese Tallow Tree
254	361806.008	3365167.481	Chinese Tallow Tree
255	361804.6434	3365163.68	Chinese Tallow Tree
256	361808.6671	3365152.161	Chinese Tallow Tree
257	361812.7946	3365156.765	Chinese Tallow Tree
258	361809.6593	3365173.791	Chinese Tallow Tree
259	361828.6723	3365184.316	Chinese Tallow Tree
260	361841.0416	3365154.154	Chinese Tallow Tree
261	361839.0572	3365174.791	Chinese Tallow Tree
262	361839.5599	3365197.112	Chinese Tallow Tree
263	361847.1006	3365203.224	Chinese Tallow Tree
264	361847.5371	3365206.439	Chinese Tallow Tree
265	361850.7121	3365213.225	Chinese Tallow Tree
266	361854.1253	3365199.533	Chinese Tallow Tree
267	361862.3406	3365198.104	Chinese Tallow Tree
268	361866.2697	3365195.088	Chinese Tallow Tree
269	361859.8006	3365201.716	Chinese Tallow Tree
270	361867.8572	3365208.344	Chinese Tallow Tree
271	361867.8869	3365231.294	Chinese Tallow Tree
272	361860.5844	3365225.024	Chinese Tallow Tree
273	361852.9644	3365233.596	Chinese Tallow Tree
274	361888.8817	3365231.199	Chinese Tallow Tree
275	361866.8286	3365213.551	Chinese Tallow Tree
276	361876.3933	3365152.234	Chinese Tallow Tree
277	361888.5377	3365149.337	Chinese Tallow Tree

278	361896.8721	3365146.955	Chinese Tallow Tree
279	361973.7866	3365199.965	Chinese Tallow Tree
280	361946.9049	3365179.116	Chinese Tallow Tree
281	361942.0366	3365226.317	Chinese Tallow Tree
282	361938.716	3365162.844	Chinese Tallow Tree
283	361928.1194	3365170.067	Chinese Tallow Tree
284	361904.8096	3365212.877	Chinese Tallow Tree
285	361915.0755	3365207.838	Chinese Tallow Tree
286	362046.481	3365215.703	Chinese Tallow Tree
287	362050.799	3365203.654	Chinese Tallow Tree
288	362055.7203	3365209.131	Chinese Tallow Tree
289	362014.8289	3365172.856	Chinese Tallow Tree
290	362056.2329	3365173.131	Chinese Tallow Tree
291	361995.0988	3365187.536	Chinese Tallow Tree
292	361982.3591	3365195.09	Chinese Tallow Tree
293	362015.9348	3365236.76	Chinese Tallow Tree
294	362046.0974	3365235.834	Chinese Tallow Tree
295	362095.9714	3365199.85	Chinese Tallow Tree
296	362066.2058	3365196.146	Chinese Tallow Tree
297	362091.0555	3365184.496	Chinese Tallow Tree
298	362090.6448	3365186.442	Chinese Tallow Tree
299	362089.7982	3365189.321	Chinese Tallow Tree
300	362072.8119	3365172.012	Chinese Tallow Tree
301	362073.4072	3365169.194	Chinese Tallow Tree
302	362123.8792	3365215.69	Chinese Tallow Tree
303	362118.0055	3365226.525	Chinese Tallow Tree
304	362330.8215	3365219.05	Chinese Tallow Tree
305	362371.9378	3365191.771	Chinese Tallow Tree
306	362353.9461	3365183.146	Chinese Tallow Tree
307	362343.0982	3365181.559	Chinese Tallow Tree
308	362332.2388	3365196.533	Chinese Tallow Tree
309	362388.7804	3365144.185	Chinese Tallow Tree
310	362390.0504	3365161.013	Chinese Tallow Tree
311	362378.7262	3365178.475	Chinese Tallow Tree
312	362402.5387	3365220.279	Chinese Tallow Tree

313	362446.5655	3365173.924	Chinese Tallow Tree
314	362443.3905	3365169.056	Chinese Tallow Tree
315	362417.2893	3365166.82	Chinese Tallow Tree
316	362415.1766	3365211.594	Chinese Tallow Tree
317	362462.0256	3365165.786	Chinese Tallow Tree
318	361828.7145	3365261.825	Chinese Tallow Tree
319	361851.6936	3365244.442	Chinese Tallow Tree
320	361850.464	3365236.44	Chinese Tallow Tree
321	361860.028	3365245.275	Chinese Tallow Tree
322	361858.5199	3365251.784	Chinese Tallow Tree
323	361852.9636	3365253.649	Chinese Tallow Tree
324	361839.3904	3365256.348	Chinese Tallow Tree
325	361880.1496	3365246.188	Chinese Tallow Tree
326	361870.4658	3365256.467	Chinese Tallow Tree
327	361868.3624	3365250.315	Chinese Tallow Tree
328	361865.5049	3365239.163	Chinese Tallow Tree
329	361857.2498	3365258.531	Chinese Tallow Tree
330	361842.6448	3365263.968	Chinese Tallow Tree
331	361875.9864	3365241.169	Chinese Tallow Tree
332	361870.7476	3365245.984	Chinese Tallow Tree
333	361863.2784	3365277.597	Chinese Tallow Tree
334	361866.9296	3365275.507	Chinese Tallow Tree
335	361867.9748	3365288.868	Chinese Tallow Tree
336	361868.5564	3365294.347	Chinese Tallow Tree
337	361950.4716	3365243.776	Chinese Tallow Tree
338	361968.9924	3365241.13	Chinese Tallow Tree
339	361973.6048	3365286.424	Chinese Tallow Tree
340	361961.1693	3365287.019	Chinese Tallow Tree
341	361965.7202	3365247.027	Chinese Tallow Tree
342	361962.0398	3365294.988	Chinese Tallow Tree
343	361905.8951	3365306.035	Chinese Tallow Tree
344	362024.071	3365285.143	Chinese Tallow Tree
345	362027.9868	3365294.456	Chinese Tallow Tree
346	361992.0034	3365319.539	Chinese Tallow Tree
347	362046.5077	3365253.076	Chinese Tallow Tree

348	362004.1743	3365271.279	Chinese Tallow Tree
349	362055.0802	3365263.447	Chinese Tallow Tree
350	362036.3741	3365281.36	Chinese Tallow Tree
351	362067.8684	3365314.427	Chinese Tallow Tree
352	362088.5589	3365303.103	Chinese Tallow Tree
353	362071.4138	3365295.324	Chinese Tallow Tree
354	362119.3366	3365289.371	Chinese Tallow Tree
355	362067.875	3365282.082	Chinese Tallow Tree
356	362110.817	3365258.97	Chinese Tallow Tree
357	362063.258	3365257.118	Chinese Tallow Tree
358	362105.2607	3365248.188	Chinese Tallow Tree
359	362144.5951	3365235.213	Chinese Tallow Tree
360	362142.571	3365237.039	Chinese Tallow Tree
361	362206.8384	3365235.425	Chinese Tallow Tree
362	362173.4347	3365302.96	Chinese Tallow Tree
363	362246.9229	3365300.193	Chinese Tallow Tree
364	362428.2687	3365298.182	Chinese Tallow Tree
365	362405.6203	3365299.452	Chinese Tallow Tree
366	362375.0344	3365296.065	Chinese Tallow Tree
367	362393.4494	3365309.718	Chinese Tallow Tree
368	362375.5636	3365231.824	Chinese Tallow Tree
369	362390.0628	3365296.594	Chinese Tallow Tree
370	362449.3296	3365298.182	Chinese Tallow Tree
371	362415.6745	3365314.269	Chinese Tallow Tree
372	362460.6273	3365304.003	Chinese Tallow Tree
373	362457.4523	3365300.96	Chinese Tallow Tree
374	362453.6158	3365299.24	Chinese Tallow Tree
375	362456.2617	3365308.633	Chinese Tallow Tree
376	362499.3888	3365285.482	Chinese Tallow Tree
377	362471.3429	3365261.14	Chinese Tallow Tree
378	362558.3646	3365287.572	Chinese Tallow Tree
379	362557.1739	3365291.303	Chinese Tallow Tree
380	362598.9253	3365272.57	Chinese Tallow Tree
381	362574.319	3365262.489	Chinese Tallow Tree
382	362571.779	3365261.14	Chinese Tallow Tree

383	362531.5093	3365309.797	Chinese Tallow Tree
384	362552.9141	3365237.566	Chinese Tallow Tree
385	362651.8209	3365292.657	Chinese Tallow Tree
386	362667.934	3365296.547	Chinese Tallow Tree
387	362616.5155	3365278.886	Chinese Tallow Tree
388	362811.5234	3365257.008	Chinese Tallow Tree
389	363056.2389	3365296.41	Chinese Tallow Tree
390	363051.7079	3365295.947	Chinese Tallow Tree
391	363048.0368	3365294.856	Chinese Tallow Tree
392	363051.2448	3365298.395	Chinese Tallow Tree
393	363052.7	3365300.015	Chinese Tallow Tree
394	363046.8461	3365304.447	Chinese Tallow Tree
395	363044.8948	3365300.148	Chinese Tallow Tree
396	363046.5815	3365298.825	Chinese Tallow Tree
397	363040.6284	3365303.124	Chinese Tallow Tree
398	363042.1498	3365308.085	Chinese Tallow Tree
399	363033.6831	3365305.307	Chinese Tallow Tree
400	361900.1379	3365332.444	Chinese Tallow Tree
401	361894.3971	3365398.21	Chinese Tallow Tree
402	361881.4391	3365377.176	Chinese Tallow Tree
403	361897.3141	3365361.539	Chinese Tallow Tree
404	361865.4053	3365389.876	Chinese Tallow Tree
405	361924.4362	3365397.995	Chinese Tallow Tree
406	361903.4547	3365384.612	Chinese Tallow Tree
407	362007.7007	3365358.682	Chinese Tallow Tree
408	361997.8053	3365393.171	Chinese Tallow Tree
409	362020.9231	3365376.593	Chinese Tallow Tree
410	362038.2269	3365381.435	Chinese Tallow Tree
411	362350.6541	3365354.532	Chinese Tallow Tree
412	362324.0634	3365363.051	Chinese Tallow Tree
413	362344.1718	3365359.876	Chinese Tallow Tree
414	362313.0303	3365370.195	Chinese Tallow Tree
415	362303.9021	3365379.482	Chinese Tallow Tree
416	362407.0898	3365384.218	Chinese Tallow Tree
417	362476.6853	3365393.439	Chinese Tallow Tree

418	362463.2577	3365396.019	Chinese Tallow Tree
419	362583.7955	3365369.263	Chinese Tallow Tree
420	362600.3849	3365346.641	Chinese Tallow Tree
421	362681.5063	3365355.584	Chinese Tallow Tree
422	362676.4263	3365352.409	Chinese Tallow Tree
423	362715.6376	3365346.218	Chinese Tallow Tree
424	362692.6188	3365350.028	Chinese Tallow Tree
425	362730.5601	3365356.695	Chinese Tallow Tree
426	362809.5296	3365353.22	Chinese Tallow Tree
427	362797.9938	3365352.903	Chinese Tallow Tree
428	362853.5564	3365343.378	Chinese Tallow Tree
429	362913.8815	3365363.698	Chinese Tallow Tree
430	362862.2347	3365330.995	Chinese Tallow Tree
431	362904.9915	3365360.946	Chinese Tallow Tree
432	362983.6258	3365382.959	Chinese Tallow Tree
433	362941.7157	3365379.467	Chinese Tallow Tree
434	362935.5774	3365373.858	Chinese Tallow Tree
435	362976.5349	3365379.784	Chinese Tallow Tree
436	363018.2334	3365384.441	Chinese Tallow Tree
437	363037.2834	3365346.341	Chinese Tallow Tree
438	363039.7176	3365348.352	Chinese Tallow Tree
439	363039.4001	3365356.395	Chinese Tallow Tree
440	363031.0392	3365360.523	Chinese Tallow Tree
441	363031.7801	3365364.439	Chinese Tallow Tree
442	363028.4992	3365364.227	Chinese Tallow Tree
443	363024.4775	3365368.46	Chinese Tallow Tree
444	363022.0434	3365369.519	Chinese Tallow Tree
445	363015.4817	3365379.89	Chinese Tallow Tree
446	363023.525	3365383.489	Chinese Tallow Tree
447	363049.0309	3365335.758	Chinese Tallow Tree
448	361875.0326	3365406.075	Chinese Tallow Tree
449	361880.7212	3365440.868	Chinese Tallow Tree
450	361889.717	3365471.494	Chinese Tallow Tree
451	361886.4759	3365493.441	Chinese Tallow Tree
452	361962.8254	3365471.566	Chinese Tallow Tree

453	361926.2485	3365477.246	Chinese Tallow Tree
454	361934.5829	3365491.335	Chinese Tallow Tree
455	361967.7352	3365482.282	Chinese Tallow Tree
456	362021.8082	3365427.93	Chinese Tallow Tree
457	362024.2159	3365420.045	Chinese Tallow Tree
458	362023.8614	3365469.406	Chinese Tallow Tree
459	362029.1002	3365473.375	Chinese Tallow Tree
460	362015.0508	3365458.77	Chinese Tallow Tree
461	362050.8225	3365493.06	Chinese Tallow Tree
462	362075.0319	3365490.808	Chinese Tallow Tree
463	362094.082	3365483.347	Chinese Tallow Tree
464	362064.0146	3365478.122	Chinese Tallow Tree
465	362067.0574	3365486.985	Chinese Tallow Tree
466	362105.616	3365472.08	Chinese Tallow Tree
467	362087.8845	3365461.616	Chinese Tallow Tree
468	362193.1227	3365436.997	Chinese Tallow Tree
469	362204.1294	3365441.865	Chinese Tallow Tree
470	362254.7675	3365449.528	Chinese Tallow Tree
471	362330.2764	3365444.236	Chinese Tallow Tree
472	362304.9769	3365438.759	Chinese Tallow Tree
473	362387.0773	3365485.088	Chinese Tallow Tree
474	362482.3936	3365471.647	Chinese Tallow Tree
475	362468.0002	3365480.114	Chinese Tallow Tree
476	362468.4236	3365411.639	Chinese Tallow Tree
477	362466.8361	3365420.106	Chinese Tallow Tree
478	362459.2425	3365406.03	Chinese Tallow Tree
479	362551.8866	3365480.837	Chinese Tallow Tree
480	362557.2841	3365476.709	Chinese Tallow Tree
481	362560.5649	3365479.884	Chinese Tallow Tree
482	362555.3791	3365485.07	Chinese Tallow Tree
483	362596.2308	3365465.491	Chinese Tallow Tree
484	362622.676	3365476.597	Chinese Tallow Tree
485	362616.1275	3365474.295	Chinese Tallow Tree
486	362636.5507	3365455.999	Chinese Tallow Tree
487	362638.7203	3365457.587	Chinese Tallow Tree

488	362669.7783	3365428.848	Chinese Tallow Tree
489	362733.844	3365466.63	Chinese Tallow Tree
490	362742.4165	3365481.976	Chinese Tallow Tree
491	362730.3779	3365401.656	Chinese Tallow Tree
492	362726.3711	3365433.622	Chinese Tallow Tree
493	362808.8088	3365426.842	Chinese Tallow Tree
494	362908.6363	3365462.799	Chinese Tallow Tree
495	362985.6038	3365411.999	Chinese Tallow Tree
496	362974.65	3365401.998	Chinese Tallow Tree
497	362977.1106	3365406.443	Chinese Tallow Tree
498	363052.1202	3365454.915	Chinese Tallow Tree
499	363026.9582	3365415.306	Chinese Tallow Tree
500	363036.2187	3365435.812	Chinese Tallow Tree
501	363031.5885	3365431.314	Chinese Tallow Tree
502	363027.1666	3365398.752	Chinese Tallow Tree
503	363025.0477	3365423.158	Chinese Tallow Tree
504	363013.8029	3365398.155	Chinese Tallow Tree
505	363020.3712	3365404.525	Chinese Tallow Tree
506	363010.5816	3365414.737	Chinese Tallow Tree
507	363021.165	3365411.933	Chinese Tallow Tree
508	363005.581	3365398.386	Chinese Tallow Tree
509	363005.8455	3365402.223	Chinese Tallow Tree
510	363004.1522	3365404.286	Chinese Tallow Tree
511	363004.0728	3365407.012	Chinese Tallow Tree
512	363030.055	3365428.84	Chinese Tallow Tree
513	363026.1127	3365430.745	Chinese Tallow Tree
514	363006.1366	3365436.645	Chinese Tallow Tree
515	363006.216	3365439.476	Chinese Tallow Tree
516	363098.0795	3365447.493	Chinese Tallow Tree
517	363121.4158	3365457.574	Chinese Tallow Tree
518	363213.0147	3365451.626	Chinese Tallow Tree
519	363222.9366	3365452.459	Chinese Tallow Tree
520	363222.8175	3365447.022	Chinese Tallow Tree
521	361919.6904	3365521.334	Chinese Tallow Tree
522	361927.5486	3365529.55	Chinese Tallow Tree

523	361925.2864	3365520.422	Chinese Tallow Tree
524	361922.6273	3365523.795	Chinese Tallow Tree
525	361894.4888	3365530.74	Chinese Tallow Tree
526	361907.6651	3365539.749	Chinese Tallow Tree
527	361903.5963	3365545.865	Chinese Tallow Tree
528	361895.2199	3365508.065	Chinese Tallow Tree
529	361937.8973	3365514.442	Chinese Tallow Tree
530	361951.1794	3365503.647	Chinese Tallow Tree
531	361957.3707	3365504.441	Chinese Tallow Tree
532	361942.9906	3365525.21	Chinese Tallow Tree
533	361919.7733	3365535.397	Chinese Tallow Tree
534	361925.6603	3365538.241	Chinese Tallow Tree
535	361906.1473	3365551.603	Chinese Tallow Tree
536	361931.3489	3365549.486	Chinese Tallow Tree
537	361964.1573	3365556.101	Chinese Tallow Tree
538	361981.0911	3365554.772	Chinese Tallow Tree
539	361974.999	3365569.477	Chinese Tallow Tree
540	361979.1054	3365578.446	Chinese Tallow Tree
541	361959.8172	3365583.367	Chinese Tallow Tree
542	361929.2181	3365577.685	Chinese Tallow Tree
543	361921.7013	3365572.936	Chinese Tallow Tree
544	361998.7831	3365582.467	Chinese Tallow Tree
545	362041.0636	3365572.73	Chinese Tallow Tree
546	362026.0088	3365559.528	Chinese Tallow Tree
547	362045.7468	3365562.967	Chinese Tallow Tree
548	362038.5415	3365514.22	Chinese Tallow Tree
549	362057.1947	3365521.629	Chinese Tallow Tree
550	361987.1461	3365519.38	Chinese Tallow Tree
551	362001.5659	3365522.621	Chinese Tallow Tree
552	361996.4462	3365548.471	Chinese Tallow Tree
553	362006.3086	3365562.454	Chinese Tallow Tree
554	362000.3885	3365564.108	Chinese Tallow Tree
555	362066.7461	3365506.263	Chinese Tallow Tree
556	362092.6754	3365518.169	Chinese Tallow Tree
557	362108.0874	3365516.119	Chinese Tallow Tree

558	362113.3129	3365514.928	Chinese Tallow Tree
559	362117.3743	3365519.717	Chinese Tallow Tree
560	362112.0958	3365526.662	Chinese Tallow Tree
561	362121.4621	3365529.877	Chinese Tallow Tree
562	362129.0027	3365532.576	Chinese Tallow Tree
563	362120.1127	3365534.64	Chinese Tallow Tree
564	362109.9924	3365534.917	Chinese Tallow Tree
565	362087.0186	3365533.952	Chinese Tallow Tree
566	362068.6564	3365515.272	Chinese Tallow Tree
567	362088.2621	3365548.715	Chinese Tallow Tree
568	362089.294	3365552.525	Chinese Tallow Tree
569	362092.3896	3365556.494	Chinese Tallow Tree
570	362110.1696	3365565.702	Chinese Tallow Tree
571	362078.3137	3365549.893	Chinese Tallow Tree
572	362072.7575	3365563.916	Chinese Tallow Tree
573	362108.2117	3365561.138	Chinese Tallow Tree
574	362098.6206	3365575.491	Chinese Tallow Tree
575	362083.1424	3365576.682	Chinese Tallow Tree
576	362084.2669	3365568.083	Chinese Tallow Tree
577	362072.6913	3365579.526	Chinese Tallow Tree
578	362082.1502	3365581.497	Chinese Tallow Tree
579	362126.6532	3365576.682	Chinese Tallow Tree
580	362137.1837	3365581.603	Chinese Tallow Tree
581	362182.4141	3365561.477	Chinese Tallow Tree
582	362150.3862	3365570.135	Chinese Tallow Tree
583	362166.9227	3365580.586	Chinese Tallow Tree
584	362157.067	3365561.999	Chinese Tallow Tree
585	362182.93	3365550.688	Chinese Tallow Tree
586	362199.8634	3365547.844	Chinese Tallow Tree
587	362166.1289	3365522.775	Chinese Tallow Tree
588	362209.9176	3365545.159	Chinese Tallow Tree
589	362176.6197	3365541.11	Chinese Tallow Tree
590	362160.2023	3365516.2	Chinese Tallow Tree
591	362163.671	3365499.478	Chinese Tallow Tree
592	362174.5057	3365510.392	Chinese Tallow Tree

593	362158.8944	3365536.428	Chinese Tallow Tree
594	362361.0532	3365537.731	Chinese Tallow Tree
595	362369.2024	3365529.952	Chinese Tallow Tree
596	362385.4285	3365510.02	Chinese Tallow Tree
597	362386.8043	3365516.74	Chinese Tallow Tree
598	362384.8464	3365516.105	Chinese Tallow Tree
599	362378.4434	3365502.77	Chinese Tallow Tree
600	362643.6358	3365510.8	Chinese Tallow Tree
601	362619.2941	3365516.29	Chinese Tallow Tree
602	362655.7406	3365552.075	Chinese Tallow Tree
603	362670.9481	3365508.204	Chinese Tallow Tree
604	362613.9832	3365558.673	Chinese Tallow Tree
605	362615.1341	3365554.982	Chinese Tallow Tree
606	362616.91	3365570.112	Chinese Tallow Tree
607	362660.8309	3365571.806	Chinese Tallow Tree
608	362762.9603	3365569.636	Chinese Tallow Tree
609	362728.9083	3365561.064	Chinese Tallow Tree
610	362728.5115	3365566.064	Chinese Tallow Tree
611	362694.777	3365546.141	Chinese Tallow Tree
612	362728.829	3365530.187	Chinese Tallow Tree
613	362832.0167	3365566.937	Chinese Tallow Tree
614	362834.5302	3365542.728	Chinese Tallow Tree
615	362839.3721	3365517.301	Chinese Tallow Tree
616	362842.5471	3365517.513	Chinese Tallow Tree
617	362837.8904	3365530.001	Chinese Tallow Tree
618	362955.3577	3365534.309	Chinese Tallow Tree
619	362967.5286	3365522.985	Chinese Tallow Tree
620	361967.5426	3365587.941	Chinese Tallow Tree
621	361973.7867	3365598.63	Chinese Tallow Tree
622	361972.4109	3365601.064	Chinese Tallow Tree
623	361966.0609	3365597.466	Chinese Tallow Tree
624	361972.4109	3365632.285	Chinese Tallow Tree
625	361960.9809	3365637.894	Chinese Tallow Tree
626	361919.2163	3365623.686	Chinese Tallow Tree
627	361931.8899	3365670.328	Chinese Tallow Tree

628	361962.9785	3365666.624	Chinese Tallow Tree
629	361965.6552	3365646.846	Chinese Tallow Tree
630	361980.0486	3365652.614	Chinese Tallow Tree
631	361933.1114	3365596.697	Chinese Tallow Tree
632	361979.6252	3365586.616	Chinese Tallow Tree
633	361979.3871	3365592.093	Chinese Tallow Tree
634	361981.054	3365601.062	Chinese Tallow Tree
635	362046.1284	3365602.134	Chinese Tallow Tree
636	362059.556	3365603.06	Chinese Tallow Tree
637	362030.9148	3365601.01	Chinese Tallow Tree
638	362002.6043	3365602.597	Chinese Tallow Tree
639	361998.5165	3365615.694	Chinese Tallow Tree
640	362002.2736	3365619.821	Chinese Tallow Tree
641	361992.6428	3365619.927	Chinese Tallow Tree
642	362024.2341	3365612.995	Chinese Tallow Tree
643	362026.2978	3365614.953	Chinese Tallow Tree
644	362024.3399	3365616.858	Chinese Tallow Tree
645	362027.1974	3365619.292	Chinese Tallow Tree
646	362024.6045	3365619.028	Chinese Tallow Tree
647	362034.9762	3365613.207	Chinese Tallow Tree
648	362045.7712	3365607.28	Chinese Tallow Tree
649	362031.0736	3365624.862	Chinese Tallow Tree
650	362032.1451	3365628.116	Chinese Tallow Tree
651	362043.337	3365624.266	Chinese Tallow Tree
652	362015.1588	3365621.965	Chinese Tallow Tree
653	361990.9428	3365639.672	Chinese Tallow Tree
654	361988.0985	3365644.368	Chinese Tallow Tree
655	362009.7283	3365633.123	Chinese Tallow Tree
656	362050.3419	3365638.217	Chinese Tallow Tree
657	362034.877	3365646.928	Chinese Tallow Tree
658	362058.6234	3365620.8	Chinese Tallow Tree
659	362038.0123	3365588.825	Chinese Tallow Tree
660	362032.6148	3365584.486	Chinese Tallow Tree
661	362063.2051	3365598.295	Chinese Tallow Tree
662	362021.3982	3365588.096	Chinese Tallow Tree

663	362098.7493	3365590.646	Chinese Tallow Tree
664	362072.7936	3365581.994	Chinese Tallow Tree
665	362081.763	3365590.408	Chinese Tallow Tree
666	362069.1423	3365594.218	Chinese Tallow Tree
667	362118.3549	3365610.411	Chinese Tallow Tree
668	362075.413	3365624.698	Chinese Tallow Tree
669	362136.135	3365596.202	Chinese Tallow Tree
670	362097.8497	3365608.85	Chinese Tallow Tree
671	362129.9172	3365592.234	Chinese Tallow Tree
672	362102.083	3365597.631	Chinese Tallow Tree
673	362093.193	3365623.296	Chinese Tallow Tree
674	362099.7018	3365625.571	Chinese Tallow Tree
675	362081.9746	3365614.247	Chinese Tallow Tree
676	362096.8707	3365626.524	Chinese Tallow Tree
677	362084.4882	3365632.08	Chinese Tallow Tree
678	362066.2716	3365634.064	Chinese Tallow Tree
679	362121.1198	3365664.386	Chinese Tallow Tree
680	362128.4223	3365662.044	Chinese Tallow Tree
681	362131.002	3365662.124	Chinese Tallow Tree
682	362158.9176	3365624.952	Chinese Tallow Tree
683	362150.3186	3365624.026	Chinese Tallow Tree
684	362145.5561	3365629.913	Chinese Tallow Tree
685	362159.0499	3365629.185	Chinese Tallow Tree
686	362202.0316	3365614.779	Chinese Tallow Tree
687	362147.8977	3365647.799	Chinese Tallow Tree
688	362151.0727	3365645.259	Chinese Tallow Tree
689	362170.6784	3365641.978	Chinese Tallow Tree
690	362214.3612	3365647.428	Chinese Tallow Tree
691	362158.5869	3365619.739	Chinese Tallow Tree
692	362226.1726	3365642.676	Chinese Tallow Tree
693	362374.2043	3365613.006	Chinese Tallow Tree
694	362401.8666	3365610.493	Chinese Tallow Tree
695	362403.6922	3365629.543	Chinese Tallow Tree
696	362413.2172	3365625.019	Chinese Tallow Tree
697	362445.126	3365618.272	Chinese Tallow Tree

698	362408.8251	3365592.382	Chinese Tallow Tree
699	362397.5142	3365612.887	Chinese Tallow Tree
700	362451.5554	3365630.35	Chinese Tallow Tree
701	362656.8593	3365649.985	Chinese Tallow Tree
702	362657.653	3365653.279	Chinese Tallow Tree
703	362662.3362	3365635.023	Chinese Tallow Tree
704	362654.6765	3365638.356	Chinese Tallow Tree
705	362656.0655	3365640.222	Chinese Tallow Tree
706	362677.4968	3365635.221	Chinese Tallow Tree
707	362622.1829	3365582.563	Chinese Tallow Tree
708	362616.4481	3365591.268	Chinese Tallow Tree
709	362663.2	3365650.125	Chinese Tallow Tree
710	362846.7419	3365600.833	Chinese Tallow Tree
711	362841.384	3365595.74	Chinese Tallow Tree
712	362840.2596	3365591.308	Chinese Tallow Tree
713	362873.2532	3365647.664	Chinese Tallow Tree
714	362922.5319	3365642.042	Chinese Tallow Tree
715	362865.8647	3365632.901	Chinese Tallow Tree
716	362908.6743	3365638.351	Chinese Tallow Tree
717	362868.6296	3365615.689	Chinese Tallow Tree
718	362865.8514	3365614.697	Chinese Tallow Tree
719	362865.7191	3365616.152	Chinese Tallow Tree
720	362870.1024	3365592.97	Chinese Tallow Tree
721	362873.1187	3365584.159	Chinese Tallow Tree
722	362961.8786	3365647.172	Chinese Tallow Tree
723	363132.6455	3365617.27	Chinese Tallow Tree
724	363133.0494	3365592.081	Chinese Tallow Tree
725	363258.5448	3365634.247	Chinese Tallow Tree
726	363252.7747	3365604.918	Chinese Tallow Tree
727	363259.6539	3365611.109	Chinese Tallow Tree
728	361962.6968	3365675.073	Chinese Tallow Tree
729	361956.499	3365710.281	Chinese Tallow Tree
730	361942.2114	3365712.53	Chinese Tallow Tree
731	361972.5724	3365721.989	Chinese Tallow Tree
732	361946.673	3365716.932	Chinese Tallow Tree

733	361959.2936	3365723.48	Chinese Tallow Tree
734	361977.4275	3365744.121	Chinese Tallow Tree
735	361976.3957	3365749.757	Chinese Tallow Tree
736	361949.4081	3365741.264	Chinese Tallow Tree
737	361969.8869	3365735.39	Chinese Tallow Tree
738	361948.1778	3365702.674	Chinese Tallow Tree
739	361953.8862	3365715.321	Chinese Tallow Tree
740	361986.5491	3365694.895	Chinese Tallow Tree
741	362002.8871	3365684.973	Chinese Tallow Tree
742	361998.5215	3365689.471	Chinese Tallow Tree
743	362050.9091	3365683.717	Chinese Tallow Tree
744	362057.1136	3365710.939	Chinese Tallow Tree
745	362060.6061	3365719.511	Chinese Tallow Tree
746	362061.9555	3365724.75	Chinese Tallow Tree
747	362054.9705	3365716.032	Chinese Tallow Tree
748	362129.474	3365686.282	Chinese Tallow Tree
749	362074.7183	3365707.753	Chinese Tallow Tree
750	362135.4992	3365731.022	Chinese Tallow Tree
751	362067.9509	3365725.704	Chinese Tallow Tree
752	362148.014	3365715.557	Chinese Tallow Tree
753	362157.7374	3365703.452	Chinese Tallow Tree
754	362160.8152	3365689.361	Chinese Tallow Tree
755	362239.244	3365741.252	Chinese Tallow Tree
756	362242.0222	3365739.93	Chinese Tallow Tree
757	362271.1264	3365677.289	Chinese Tallow Tree
758	362225.2873	3365713.074	Chinese Tallow Tree
759	362369.4863	3365725.785	Chinese Tallow Tree
760	362341.2288	3365731.764	Chinese Tallow Tree
761	362398.0037	3365729.21	Chinese Tallow Tree
762	362408.7458	3365751.27	Chinese Tallow Tree
763	362385.2508	3365742.38	Chinese Tallow Tree
764	362452.9216	3365693.758	Chinese Tallow Tree
765	362531.3972	3365670.475	Chinese Tallow Tree
766	362503.3778	3365668.569	Chinese Tallow Tree
767	362477.8984	3365678.002	Chinese Tallow Tree

768	362511.9635	3365692.752	Chinese Tallow Tree
769	362579.1281	3365712.953	Chinese Tallow Tree
770	362548.5687	3365682.659	Chinese Tallow Tree
771	362608.6348	3365720.097	Chinese Tallow Tree
772	362599.9035	3365718.377	Chinese Tallow Tree
773	362611.8759	3365721.222	Chinese Tallow Tree
774	362601.5307	3365726.381	Chinese Tallow Tree
775	362602.5361	3365734.954	Chinese Tallow Tree
776	362596.874	3365734.266	Chinese Tallow Tree
777	362585.6755	3365716.36	Chinese Tallow Tree
778	362621.4208	3365742.527	Chinese Tallow Tree
779	362624.0666	3365745.226	Chinese Tallow Tree
780	362615.9968	3365735.952	Chinese Tallow Tree
781	362639.0818	3365742.765	Chinese Tallow Tree
782	362672.9485	3365745.081	Chinese Tallow Tree
783	362659.1901	3365709.825	Chinese Tallow Tree
784	362653.6868	3365691.383	Chinese Tallow Tree
785	362647.7336	3365697.575	Chinese Tallow Tree
786	362667.5774	3365690.272	Chinese Tallow Tree
787	362671.8637	3365701.464	Chinese Tallow Tree
788	362651.2658	3365686.581	Chinese Tallow Tree
789	362665.474	3365702.139	Chinese Tallow Tree
790	362670.7128	3365700.273	Chinese Tallow Tree
791	362651.4246	3365712.219	Chinese Tallow Tree
792	362654.7583	3365718.569	Chinese Tallow Tree
793	362645.789	3365715.751	Chinese Tallow Tree
794	362659.7987	3365723.252	Chinese Tallow Tree
795	362667.6568	3365718.649	Chinese Tallow Tree
796	362674.0862	3365731.428	Chinese Tallow Tree
797	362680.2775	3365732.42	Chinese Tallow Tree
798	362672.7765	3365734.444	Chinese Tallow Tree
799	362668.4506	3365737.183	Chinese Tallow Tree
800	362670.2762	3365744.882	Chinese Tallow Tree
801	362642.5743	3365731.547	Chinese Tallow Tree
802	362632.7714	3365741.271	Chinese Tallow Tree

803	362658.3302	3365744.842	Chinese Tallow Tree
804	362662.6165	3365748.652	Chinese Tallow Tree
805	362660.7909	3365748.375	Chinese Tallow Tree
806	362669.2046	3365748.573	Chinese Tallow Tree
807	362685.4368	3365734.722	Chinese Tallow Tree
808	362629.9139	3365720.712	Chinese Tallow Tree
809	362625.8768	3365731.657	Chinese Tallow Tree
810	362618.5346	3365731.816	Chinese Tallow Tree
811	362628.3374	3365724.831	Chinese Tallow Tree
812	362641.6328	3365727.887	Chinese Tallow Tree
813	362637.9815	3365724.434	Chinese Tallow Tree
814	362640.3628	3365724.474	Chinese Tallow Tree
815	362660.7622	3365711.933	Chinese Tallow Tree
816	362672.0732	3365711.218	Chinese Tallow Tree
817	362657.0712	3365670.727	Chinese Tallow Tree
818	362672.0467	3365673.082	Chinese Tallow Tree
819	362628.1258	3365683.903	Chinese Tallow Tree
820	362672.0467	3365697.609	Chinese Tallow Tree
821	362728.6368	3365681.769	Chinese Tallow Tree
822	362750.293	3365664.253	Chinese Tallow Tree
823	362840.9256	3365729.66	Chinese Tallow Tree
824	362813.7528	3365678.291	Chinese Tallow Tree
825	362807.1912	3365715.465	Chinese Tallow Tree
826	362841.5871	3365725.559	Chinese Tallow Tree
827	362871.3223	3365739.813	Chinese Tallow Tree
828	362856.8364	3365737.114	Chinese Tallow Tree
829	362864.4564	3365732.63	Chinese Tallow Tree
830	362898.9449	3365733.146	Chinese Tallow Tree
831	362862.9946	3365717.403	Chinese Tallow Tree
832	362866.8972	3365721.471	Chinese Tallow Tree
833	362874.537	3365689.952	Chinese Tallow Tree
834	362877.6062	3365688.153	Chinese Tallow Tree
835	362861.0962	3365663.626	Chinese Tallow Tree
836	362892.6875	3365664.658	Chinese Tallow Tree
837	362868.3987	3365680.533	Chinese Tallow Tree

838	362872.2087	3365673.866	Chinese Tallow Tree
839	362924.2788	3365712.521	Chinese Tallow Tree
840	362933.354	3365700.721	Chinese Tallow Tree
841	363033.9911	3365722.131	Chinese Tallow Tree
842	363019.4919	3365662.547	Chinese Tallow Tree
843	363100.6001	3365743.112	Chinese Tallow Tree
844	363115.6153	3365744.039	Chinese Tallow Tree
845	363130.7759	3365738.165	Chinese Tallow Tree
846	363109.7018	3365727.528	Chinese Tallow Tree
847	363121.1186	3365735.512	Chinese Tallow Tree
848	363108.7758	3365705.389	Chinese Tallow Tree
849	363202.1077	3365721.053	Chinese Tallow Tree
850	363245.5127	3365737.986	Chinese Tallow Tree
851	363242.2848	3365729.414	Chinese Tallow Tree
852	361940.0692	3365776.101	Chinese Tallow Tree
853	361942.9134	3365797.731	Chinese Tallow Tree
854	361962.1619	3365768.031	Chinese Tallow Tree
855	361980.0875	3365774.183	Chinese Tallow Tree
856	361939.4077	3365805.668	Chinese Tallow Tree
857	361982.601	3365808.049	Chinese Tallow Tree
858	361977.5739	3365827.827	Chinese Tallow Tree
859	361965.7487	3365843.377	Chinese Tallow Tree
860	361965.828	3365831.511	Chinese Tallow Tree
861	361966.8996	3365829.05	Chinese Tallow Tree
862	361976.16	3365816.152	Chinese Tallow Tree
863	361992.4584	3365829.116	Chinese Tallow Tree
864	361990.99	3365835.228	Chinese Tallow Tree
865	362000.5547	3365826.417	Chinese Tallow Tree
866	361981.4253	3365809.907	Chinese Tallow Tree
867	361966.3559	3365797.081	Chinese Tallow Tree
868	361963.6452	3365792.008	Chinese Tallow Tree
869	361961.9784	3365786.651	Chinese Tallow Tree
870	361957.2158	3365771.847	Chinese Tallow Tree
871	361972.8131	3365781.372	Chinese Tallow Tree
872	361946.143	3365764.108	Chinese Tallow Tree

873	361987.7753	3365771.014	Chinese Tallow Tree
874	361983.3303	3365774.07	Chinese Tallow Tree
875	362034.2037	3365808.348	Chinese Tallow Tree
876	362026.7953	3365814.803	Chinese Tallow Tree
877	362020.5512	3365812.052	Chinese Tallow Tree
878	362018.752	3365838.722	Chinese Tallow Tree
879	362012.402	3365833.007	Chinese Tallow Tree
880	362015.2595	3365830.678	Chinese Tallow Tree
881	362011.5553	3365824.858	Chinese Tallow Tree
882	362000.7603	3365813.11	Chinese Tallow Tree
883	361995.2569	3365791.097	Chinese Tallow Tree
884	361991.9761	3365808.877	Chinese Tallow Tree
885	362025.4195	3365787.604	Chinese Tallow Tree
886	361995.3628	3365786.017	Chinese Tallow Tree
887	362037.5374	3365772.192	Chinese Tallow Tree
888	362046.401	3365796.402	Chinese Tallow Tree
889	362040.7124	3365816.841	Chinese Tallow Tree
890	362030.3672	3365766.411	Chinese Tallow Tree
891	361990.9045	3365768.065	Chinese Tallow Tree
892	362008.7639	3365773.819	Chinese Tallow Tree
893	362011.4759	3365785.064	Chinese Tallow Tree
894	362034.681	3365839.008	Chinese Tallow Tree
895	362022.3779	3365827.499	Chinese Tallow Tree
896	362070.261	3365840.205	Chinese Tallow Tree
897	362065.4984	3365840.84	Chinese Tallow Tree
898	362076.0818	3365843.856	Chinese Tallow Tree
899	362068.7264	3365836.395	Chinese Tallow Tree
900	362088.8347	3365833.22	Chinese Tallow Tree
901	362072.6951	3365830.945	Chinese Tallow Tree
902	362079.8918	3365819.515	Chinese Tallow Tree
903	362088.1865	3365828.325	Chinese Tallow Tree
904	362116.788	3365810.223	Chinese Tallow Tree
905	362110.9573	3365790.746	Chinese Tallow Tree
906	362110.3223	3365804.258	Chinese Tallow Tree
907	362099.6384	3365804.482	Chinese Tallow Tree

908	362103.455	3365782.435	Chinese Tallow Tree
909	362108.0587	3365772.99	Chinese Tallow Tree
910	362100.1212	3365771.521	Chinese Tallow Tree
911	362096.47	3365762.909	Chinese Tallow Tree
912	362085.0399	3365767.592	Chinese Tallow Tree
913	362084.8812	3365764.774	Chinese Tallow Tree
914	362102.5223	3365756.731	Chinese Tallow Tree
915	362140.17	3365775.104	Chinese Tallow Tree
916	362118.9794	3365777.077	Chinese Tallow Tree
917	362081.9509	3365771.997	Chinese Tallow Tree
918	362220.1766	3365836.174	Chinese Tallow Tree
919	362206.4182	3365836.227	Chinese Tallow Tree
920	362177.4727	3365837.127	Chinese Tallow Tree
921	362201.7086	3365827.549	Chinese Tallow Tree
922	362170.7391	3365819.162	Chinese Tallow Tree
923	362165.2225	3365794	Chinese Tallow Tree
924	362150.4984	3365795.786	Chinese Tallow Tree
925	362209.3948	3365776.656	Chinese Tallow Tree
926	362204.4735	3365781.3	Chinese Tallow Tree
927	362192.7657	3365777.847	Chinese Tallow Tree
928	362188.3604	3365774.87	Chinese Tallow Tree
929	362197.2107	3365759.352	Chinese Tallow Tree
930	362189.3922	3365757.805	Chinese Tallow Tree
931	362172.6044	3365751.256	Chinese Tallow Tree
932	362227.2674	3365797.968	Chinese Tallow Tree
933	362251.0138	3365772.766	Chinese Tallow Tree
934	362281.441	3365819.178	Chinese Tallow Tree
935	362225.3492	3365831.482	Chinese Tallow Tree
936	362285.2311	3365832.513	Chinese Tallow Tree
937	362288.4061	3365821.48	Chinese Tallow Tree
938	362285.1518	3365824.06	Chinese Tallow Tree
939	362268.1655	3365831.759	Chinese Tallow Tree
940	362241.8923	3365825.132	Chinese Tallow Tree
941	362281.5799	3365811.36	Chinese Tallow Tree
942	362242.051	3365772.744	Chinese Tallow Tree

943	362230.5813	3365764.052	Chinese Tallow Tree
944	362358.8115	3365782.128	Chinese Tallow Tree
945	362332.234	3365810.041	Chinese Tallow Tree
946	362355.1867	3365782.988	Chinese Tallow Tree
947	362335.4884	3365836.024	Chinese Tallow Tree
948	362331.7048	3365824.924	Chinese Tallow Tree
949	362332.7764	3365805.2	Chinese Tallow Tree
950	362454.7493	3365836.879	Chinese Tallow Tree
951	362410.7623	3365819.284	Chinese Tallow Tree
952	362391.994	3365802.474	Chinese Tallow Tree
953	362390.7637	3365800.688	Chinese Tallow Tree
954	362389.2556	3365798.425	Chinese Tallow Tree
955	362392.1924	3365803.942	Chinese Tallow Tree
956	362431.5724	3365829.888	Chinese Tallow Tree
957	362424.1509	3365829.65	Chinese Tallow Tree
958	362421.2537	3365822.784	Chinese Tallow Tree
959	362434.9459	3365830.007	Chinese Tallow Tree
960	362511.2955	3365790.985	Chinese Tallow Tree
961	362513.2799	3365787.651	Chinese Tallow Tree
962	362516.2168	3365795.985	Chinese Tallow Tree
963	362495.9761	3365773.76	Chinese Tallow Tree
964	362611.2619	3365824.338	Chinese Tallow Tree
965	362538.1971	3365801.081	Chinese Tallow Tree
966	362611.7779	3365793.858	Chinese Tallow Tree
967	362596.141	3365800.009	Chinese Tallow Tree
968	362547.2856	3365788.143	Chinese Tallow Tree
969	362553.3578	3365778.935	Chinese Tallow Tree
970	362546.5315	3365782.11	Chinese Tallow Tree
971	362585.6238	3365769.886	Chinese Tallow Tree
972	362687.4819	3365828.802	Chinese Tallow Tree
973	362620.7274	3365786.902	Chinese Tallow Tree
974	362669.1352	3365776.506	Chinese Tallow Tree
975	362687.3122	3365765.314	Chinese Tallow Tree
976	362677.9062	3365770.91	Chinese Tallow Tree
977	362673.6596	3365761.981	Chinese Tallow Tree

978	362665.9205	3365762.457	Chinese Tallow Tree
979	362683.78	3365755.234	Chinese Tallow Tree
980	362684.9309	3365751.464	Chinese Tallow Tree
981	362682.9862	3365752.773	Chinese Tallow Tree
982	362675.1678	3365752.099	Chinese Tallow Tree
983	362677.6284	3365751.503	Chinese Tallow Tree
984	362664.2537	3365753.249	Chinese Tallow Tree
985	362658.7768	3365752.059	Chinese Tallow Tree
986	362651.7124	3365753.329	Chinese Tallow Tree
987	362649.5296	3365755.829	Chinese Tallow Tree
988	362768.4303	3365826.384	Chinese Tallow Tree
989	362742.3026	3365834.903	Chinese Tallow Tree
990	362723.6809	3365816.111	Chinese Tallow Tree
991	362739.5162	3365802.975	Chinese Tallow Tree
992	362751.5415	3365800.157	Chinese Tallow Tree
993	362740.0718	3365792.338	Chinese Tallow Tree
994	362744.3978	3365793.847	Chinese Tallow Tree
995	362730.474	3365787.47	Chinese Tallow Tree
996	362770.753	3365773.937	Chinese Tallow Tree
997	362693.8032	3365760.478	Chinese Tallow Tree
998	362735.0782	3365752.937	Chinese Tallow Tree
999	362728.2917	3365762.462	Chinese Tallow Tree
1000	362768.9847	3365766.061	Chinese Tallow Tree
1001	362800.0561	3365833.906	Chinese Tallow Tree
1002	362825.2974	3365829.381	Chinese Tallow Tree
1003	362788.9568	3365825.307	Chinese Tallow Tree
1004	362795.3994	3365816.675	Chinese Tallow Tree
1005	362837.455	3365792.183	Chinese Tallow Tree
1006	362846.4244	3365749.89	Chinese Tallow Tree
1007	362847.8928	3365755.009	Chinese Tallow Tree
1008	362819.04	3365756.557	Chinese Tallow Tree
1009	362782.8052	3365753.303	Chinese Tallow Tree
1010	362783.599	3365751.239	Chinese Tallow Tree
1011	362792.3699	3365770.011	Chinese Tallow Tree
1012	362787.409	3365771.599	Chinese Tallow Tree

1013	362809.171	3365769.945	Chinese Tallow Tree
1014	362825.1089	3365781.441	Chinese Tallow Tree
1015	362794.9992	3365828.061	Chinese Tallow Tree
1016	362865.6563	3365827.016	Chinese Tallow Tree
1017	362866.847	3365830.588	Chinese Tallow Tree
1018	362892.6439	3365828.405	Chinese Tallow Tree
1019	362873.9246	3365810.083	Chinese Tallow Tree
1020	362883.3173	3365803.799	Chinese Tallow Tree
1021	362899.8538	3365819.608	Chinese Tallow Tree
1022	362908.6512	3365797.184	Chinese Tallow Tree
1023	362894.033	3365791.429	Chinese Tallow Tree
1024	362905.0132	3365796.589	Chinese Tallow Tree
1025	362897.208	3365772.842	Chinese Tallow Tree
1026	362903.2272	3365745.921	Chinese Tallow Tree
1027	362855.8667	3365783.862	Chinese Tallow Tree
1028	362997.8993	3365824.996	Chinese Tallow Tree
1029	362992.3431	3365818.17	Chinese Tallow Tree
1030	362992.7796	3365813.09	Chinese Tallow Tree
1031	362957.6561	3365805.589	Chinese Tallow Tree
1032	362966.7843	3365802.533	Chinese Tallow Tree
1033	362951.703	3365800.27	Chinese Tallow Tree
1034	363006.9878	3365800.628	Chinese Tallow Tree
1035	362982.183	3365794.913	Chinese Tallow Tree
1036	362988.6124	3365776.379	Chinese Tallow Tree
1037	362995.2799	3365779.077	Chinese Tallow Tree
1038	362987.5012	3365760.543	Chinese Tallow Tree
1039	362990.1735	3365758.44	Chinese Tallow Tree
1040	363046.9532	3365813.738	Chinese Tallow Tree
1041	363011.6246	3365830.096	Chinese Tallow Tree
1042	363032.8972	3365822.317	Chinese Tallow Tree
1043	363009.2434	3365817.793	Chinese Tallow Tree
1044	363029.6428	3365796.573	Chinese Tallow Tree
1045	363043.6128	3365798.16	Chinese Tallow Tree
1046	363073.987	3365796.785	Chinese Tallow Tree
1047	363010.5795	3365797.737	Chinese Tallow Tree

1048	363071.1427	3365773.607	Chinese Tallow Tree
1049	363027.4566	3365757.61	Chinese Tallow Tree
1050	363113.7308	3365824.454	Chinese Tallow Tree
1051	363122.2504	3365812.548	Chinese Tallow Tree
1052	363132.4687	3365827.752	Chinese Tallow Tree
1053	363129.9816	3365826.323	Chinese Tallow Tree
1054	363123.1553	3365825.529	Chinese Tallow Tree
1055	363106.1161	3365828.969	Chinese Tallow Tree
1056	363115.8528	3365816.216	Chinese Tallow Tree
1057	363121.462	3365822.09	Chinese Tallow Tree
1058	363142.0731	3365805.54	Chinese Tallow Tree
1059	363131.999	3365795.254	Chinese Tallow Tree
1060	363135.9281	3365797.08	Chinese Tallow Tree
1061	363136.8012	3365787.793	Chinese Tallow Tree
1062	363134.9756	3365775.649	Chinese Tallow Tree
1063	363127.7525	3365759.218	Chinese Tallow Tree
1064	363108.3452	3365743.66	Chinese Tallow Tree
1065	363126.4824	3365748.859	Chinese Tallow Tree
1066	363119.3784	3365754.257	Chinese Tallow Tree
1067	363222.7976	3365748.033	Chinese Tallow Tree
1068	363240.2601	3365764.622	Chinese Tallow Tree
1069	363266.1629	3365825.291	Chinese Tallow Tree
1070	363267.8298	3365829.141	Chinese Tallow Tree
1071	363265.4897	3365830.527	Chinese Tallow Tree
1072	363262.6866	3365792.107	Chinese Tallow Tree
1073	363268.1436	3365795.778	Chinese Tallow Tree
1074	363261.529	3365796.142	Chinese Tallow Tree
1075	363262.1905	3365819.71	Chinese Tallow Tree
1076	363257.2692	3365811.653	Chinese Tallow Tree
1077	363276.8881	3365699.664	Chinese Tallow Tree
1078	363265.7177	3365686.136	Chinese Tallow Tree
1079	363244.7825	3365402.833	Chinese Tallow Tree
1080	363238.0357	3365402.502	Chinese Tallow Tree
1081	363227.4523	3365375.514	Chinese Tallow Tree
1082	363222.8931	3365384.148	Chinese Tallow Tree

1083	363129.6802	3365249.432	Chinese Tallow Tree
1084	363290.1	3365823.806	Chinese Tallow Tree
1085	362683.1507	3365443.411	Chinese Tallow Tree
1086	362686.2728	3365461.535	Chinese Tallow Tree
1087	361977.2065	3365895.952	Chinese Tallow Tree
1088	361970.539	3365893.254	Chinese Tallow Tree
1089	361971.4121	3365888.094	Chinese Tallow Tree
1090	361967.2846	3365876.585	Chinese Tallow Tree
1091	361963.3158	3365863.012	Chinese Tallow Tree
1092	361963.6333	3365859.043	Chinese Tallow Tree
1093	361972.0471	3365858.408	Chinese Tallow Tree
1094	361973.6346	3365904.789	Chinese Tallow Tree
1095	361977.5505	3365914.526	Chinese Tallow Tree
1096	361976.4012	3365928.503	Chinese Tallow Tree
1097	362019.1702	3365920.718	Chinese Tallow Tree
1098	362021.2736	3365931.196	Chinese Tallow Tree
1099	362051.3184	3365908.044	Chinese Tallow Tree
1100	362057.2153	3365902.167	Chinese Tallow Tree
1101	362047.6903	3365908.305	Chinese Tallow Tree
1102	362057.8503	3365909.734	Chinese Tallow Tree
1103	362051.4474	3365918.042	Chinese Tallow Tree
1104	362049.5953	3365921.587	Chinese Tallow Tree
1105	362038.6945	3365892.748	Chinese Tallow Tree
1106	362057.6916	3365891.16	Chinese Tallow Tree
1107	362051.3416	3365912.856	Chinese Tallow Tree
1108	362001.9173	3365906.453	Chinese Tallow Tree
1109	362033.7203	3365890.525	Chinese Tallow Tree
1110	362055.7491	3365894.126	Chinese Tallow Tree
1111	362051.0924	3365883.979	Chinese Tallow Tree
1112	362036.3816	3365881.016	Chinese Tallow Tree
1113	362033.5241	3365885.196	Chinese Tallow Tree
1114	362032.3599	3365871.226	Chinese Tallow Tree
1115	362026.5655	3365870.234	Chinese Tallow Tree
1116	362024.6473	3365856.872	Chinese Tallow Tree
1117	362064.0676	3365873.234	Chinese Tallow Tree

1118	362003.0546	3365863.63	Chinese Tallow Tree
1119	361988.1188	3365874.478	Chinese Tallow Tree
1120	362003.425	3365882.376	Chinese Tallow Tree
1121	362002.8694	3365878.989	Chinese Tallow Tree
1122	362004.2121	3365900.004	Chinese Tallow Tree
1123	362045.3285	3365892.066	Chinese Tallow Tree
1124	362040.2484	3365875.715	Chinese Tallow Tree
1125	362101.6054	3365912.862	Chinese Tallow Tree
1126	362066.9979	3365921.911	Chinese Tallow Tree
1127	362080.4123	3365911.83	Chinese Tallow Tree
1128	362067.3815	3365911.5	Chinese Tallow Tree
1129	362112.6254	3365896.418	Chinese Tallow Tree
1130	362073.8806	3365910.742	Chinese Tallow Tree
1131	362130.5986	3365894.218	Chinese Tallow Tree
1132	362119.6812	3365888.401	Chinese Tallow Tree
1133	362087.6137	3365884.022	Chinese Tallow Tree
1134	362087.7195	3365887.726	Chinese Tallow Tree
1135	362083.1687	3365883.757	Chinese Tallow Tree
1136	362074.8078	3365883.916	Chinese Tallow Tree
1137	362081.6209	3365866.361	Chinese Tallow Tree
1138	362086.4231	3365879.736	Chinese Tallow Tree
1139	362091.2394	3365860.343	Chinese Tallow Tree
1140	362112.3532	3365859.351	Chinese Tallow Tree
1141	362085.9278	3365853.851	Chinese Tallow Tree
1142	362148.535	3365850.272	Chinese Tallow Tree
1143	362141.8543	3365879.099	Chinese Tallow Tree
1144	362160.1635	3365885.872	Chinese Tallow Tree
1145	362176.4254	3365878.666	Chinese Tallow Tree
1146	362176.7429	3365882.899	Chinese Tallow Tree
1147	362217.9651	3365880.69	Chinese Tallow Tree
1148	362221.2989	3365883.388	Chinese Tallow Tree
1149	362219.9759	3365878.467	Chinese Tallow Tree
1150	362147.9562	3365855.872	Chinese Tallow Tree
1151	362231.8359	3365882.317	Chinese Tallow Tree
1152	362216.9663	3365901.751	Chinese Tallow Tree

1153	362212.68	3365901.751	Chinese Tallow Tree
1154	362216.4371	3365899.211	Chinese Tallow Tree
1155	362222.8441	3365901.905	Chinese Tallow Tree
1156	362212.68	3365909.423	Chinese Tallow Tree
1157	362206.1184	3365906.989	Chinese Tallow Tree
1158	362184.4754	3365915.244	Chinese Tallow Tree
1159	362169.6587	3365910.693	Chinese Tallow Tree
1160	362156.5993	3365922.917	Chinese Tallow Tree
1161	362178.5465	3365925.021	Chinese Tallow Tree
1162	362195.9561	3365930.425	Chinese Tallow Tree
1163	362214.5299	3365917.566	Chinese Tallow Tree
1164	362216.2762	3365920.953	Chinese Tallow Tree
1165	362220.4037	3365925.345	Chinese Tallow Tree
1166	362226.0129	3365912.909	Chinese Tallow Tree
1167	362234.1091	3365915.291	Chinese Tallow Tree
1168	362260.5543	3365923.718	Chinese Tallow Tree
1169	362257.6968	3365918.955	Chinese Tallow Tree
1170	362240.3599	3365916.891	Chinese Tallow Tree
1171	362243.8657	3365914.047	Chinese Tallow Tree
1172	362241.5373	3365922.897	Chinese Tallow Tree
1173	362254.7136	3365912.34	Chinese Tallow Tree
1174	362258.8014	3365908.134	Chinese Tallow Tree
1175	362246.0617	3365902.419	Chinese Tallow Tree
1176	362243.9186	3365904.085	Chinese Tallow Tree
1177	362245.0298	3365905.713	Chinese Tallow Tree
1178	362242.7676	3365906.11	Chinese Tallow Tree
1179	362236.497	3365913.809	Chinese Tallow Tree
1180	362239.6191	3365897.775	Chinese Tallow Tree
1181	362232.1578	3365899.045	Chinese Tallow Tree
1182	362277.6603	3365843.583	Chinese Tallow Tree
1183	362283.0578	3365848.464	Chinese Tallow Tree
1184	362279.3536	3365856.587	Chinese Tallow Tree
1185	362276.6417	3365863.135	Chinese Tallow Tree
1186	362280.4208	3365870.244	Chinese Tallow Tree
1187	362275.9526	3365870.492	Chinese Tallow Tree

1188	362271.9839	3365883.159	Chinese Tallow Tree
1189	362270.7602	3365889.112	Chinese Tallow Tree
1190	362268.5939	3365891.741	Chinese Tallow Tree
1191	362268.4087	3365893.593	Chinese Tallow Tree
1192	362269.6787	3365898.329	Chinese Tallow Tree
1193	362262.1116	3365897.059	Chinese Tallow Tree
1194	362273.2572	3365906.287	Chinese Tallow Tree
1195	362259.9166	3365890.123	Chinese Tallow Tree
1196	362368.8392	3365869.473	Chinese Tallow Tree
1197	362336.7849	3365866.384	Chinese Tallow Tree
1198	362396.7726	3365920.32	Chinese Tallow Tree
1199	362423.2773	3365857.012	Chinese Tallow Tree
1200	362399.9845	3365923.929	Chinese Tallow Tree
1201	362492.6958	3365912.498	Chinese Tallow Tree
1202	362501.48	3365907.788	Chinese Tallow Tree
1203	362508.9413	3365866.597	Chinese Tallow Tree
1204	362597.5504	3365898.44	Chinese Tallow Tree
1205	362643.8261	3365868.132	Chinese Tallow Tree
1206	362632.5482	3365842.688	Chinese Tallow Tree
1207	362700.07	3365912.832	Chinese Tallow Tree
1208	362760.4911	3365851.376	Chinese Tallow Tree
1209	362848.5677	3365893.746	Chinese Tallow Tree
1210	362849.9965	3365900.215	Chinese Tallow Tree
1211	362825.5291	3365842.979	Chinese Tallow Tree
1212	362853.4735	3365912.114	Chinese Tallow Tree
1213	362902.7501	3365901.225	Chinese Tallow Tree
1214	362882.7542	3365902.157	Chinese Tallow Tree
1215	362893.0564	3365881.814	Chinese Tallow Tree
1216	362924.9652	3365835.34	Chinese Tallow Tree
1217	362908.9618	3365836.479	Chinese Tallow Tree
1218	362942.328	3365925.806	Chinese Tallow Tree
1219	362951.9421	3365908.043	Chinese Tallow Tree
1220	362950.0371	3365903.915	Chinese Tallow Tree
1221	362935.9083	3365903.439	Chinese Tallow Tree
1222	362951.1682	3365920.326	Chinese Tallow Tree

1223	362961.5266	3365912.964	Chinese Tallow Tree
1224	362987.7866	3365896.792	Chinese Tallow Tree
1225	363000.5528	3365886.837	Chinese Tallow Tree
1226	362931.4898	3365874.798	Chinese Tallow Tree
1227	362953.4767	3365859.558	Chinese Tallow Tree
1228	362995.4118	3365833.928	Chinese Tallow Tree
1229	363045.3098	3365902.405	Chinese Tallow Tree
1230	363076.7853	3365886.004	Chinese Tallow Tree
1231	363062.2597	3365889.537	Chinese Tallow Tree
1232	363038.6985	3365884.589	Chinese Tallow Tree
1233	363078.2141	3365850.444	Chinese Tallow Tree
1234	363085.4743	3365836.072	Chinese Tallow Tree
1235	363109.151	3365917.592	Chinese Tallow Tree
1236	363103.2938	3365890.006	Chinese Tallow Tree
1237	363112.5013	3365884.966	Chinese Tallow Tree
1238	363110.5169	3365888.379	Chinese Tallow Tree
1239	363096.9834	3365877.028	Chinese Tallow Tree
1240	363158.5521	3365865.473	Chinese Tallow Tree
1241	363122.2049	3365861.636	Chinese Tallow Tree
1242	363117.707	3365864.48	Chinese Tallow Tree
1243	363158.8795	3365844.308	Chinese Tallow Tree
1244	363148.4814	3365833.831	Chinese Tallow Tree
1245	363168.2061	3365917.36	Chinese Tallow Tree
1246	363202.3771	3365914.145	Chinese Tallow Tree
1247	363201.3849	3365916.447	Chinese Tallow Tree
1248	363193.9633	3365905.732	Chinese Tallow Tree
1249	363228.69	3365914.503	Chinese Tallow Tree
1250	363230.7537	3365898.403	Chinese Tallow Tree
1251	363243.4141	3365902.252	Chinese Tallow Tree
1252	363216.9821	3365869.497	Chinese Tallow Tree
1253	363219.6809	3365859.284	Chinese Tallow Tree
1254	363226.0309	3365872.249	Chinese Tallow Tree
1255	363214.1941	3365839.622	Chinese Tallow Tree
1256	363250.835	3365906.59	Chinese Tallow Tree
1257	363247.9378	3365897.819	Chinese Tallow Tree

1258	363268.6679	3365881.957	Chinese Tallow Tree
1259	363273.1976	3365846.006	Chinese Tallow Tree
1260	363271.5572	3365851.827	Chinese Tallow Tree
1261	363246.9773	3365845.874	Chinese Tallow Tree
1262	361985.3493	3365947.276	Chinese Tallow Tree
1263	361972.7441	3365944.163	Chinese Tallow Tree
1264	361972.7441	3365944.163	Chinese Tallow Tree
1265	362001.5467	3366015.169	Chinese Tallow Tree
1266	362007.9397	3365995.982	Chinese Tallow Tree
1267	361992.0647	3365979.948	Chinese Tallow Tree
1268	361992.1595	3365987.887	Chinese Tallow Tree
1269	362005.6863	3366022.415	Chinese Tallow Tree
1270	362031.4888	3366006.671	Chinese Tallow Tree
1271	362062.6039	3365986.324	Chinese Tallow Tree
1272	362024.2657	3365988.388	Chinese Tallow Tree
1273	362051.0019	3365978.688	Chinese Tallow Tree
1274	362038.8773	3365949.551	Chinese Tallow Tree
1275	362009.5085	3365937.75	Chinese Tallow Tree
1276	362146.4042	3366011.523	Chinese Tallow Tree
1277	362100.1384	3366009.482	Chinese Tallow Tree
1278	362097.7009	3366007.647	Chinese Tallow Tree
1279	362137.4414	3365992.102	Chinese Tallow Tree
1280	362075.2113	3365977.074	Chinese Tallow Tree
1281	362074.0637	3365967.605	Chinese Tallow Tree
1282	362075.0889	3365949.594	Chinese Tallow Tree
1283	362124.2142	3365944.045	Chinese Tallow Tree
1284	362122.415	3365950.766	Chinese Tallow Tree
1285	362117.4111	3365937.97	Chinese Tallow Tree
1286	362111.7358	3365937.652	Chinese Tallow Tree
1287	362190.7141	3366015.916	Chinese Tallow Tree
1288	362176.1487	3366015.599	Chinese Tallow Tree
1289	362212.4232	3366016.789	Chinese Tallow Tree
1290	362222.226	3366016.869	Chinese Tallow Tree
1291	362222.6626	3366008.256	Chinese Tallow Tree
1292	362193.3334	3365998.017	Chinese Tallow Tree

1293	362199.9216	3366002.026	Chinese Tallow Tree
1294	362202.8585	3365994.247	Chinese Tallow Tree
1295	362220.0432	3365999.882	Chinese Tallow Tree
1296	362181.9795	3365997.961	Chinese Tallow Tree
1297	362225.1596	3365984.308	Chinese Tallow Tree
1298	362202.1408	3365985.618	Chinese Tallow Tree
1299	362188.8851	3365990.142	Chinese Tallow Tree
1300	362173.655	3365988.896	Chinese Tallow Tree
1301	362176.3141	3365981.315	Chinese Tallow Tree
1302	362180.6003	3365980.164	Chinese Tallow Tree
1303	362178.907	3365987.573	Chinese Tallow Tree
1304	362176.7374	3365972.386	Chinese Tallow Tree
1305	362180.7062	3365971.724	Chinese Tallow Tree
1306	362184.0135	3365965.969	Chinese Tallow Tree
1307	362221.5844	3365973.973	Chinese Tallow Tree
1308	362204.0921	3365972.266	Chinese Tallow Tree
1309	362191.1786	3365937.371	Chinese Tallow Tree
1310	362193.9568	3365940.903	Chinese Tallow Tree
1311	362183.9158	3365950.269	Chinese Tallow Tree
1312	362204.7915	3365950.349	Chinese Tallow Tree
1313	362190.2261	3365951.023	Chinese Tallow Tree
1314	362186.178	3365934.712	Chinese Tallow Tree
1315	362220.865	3365946.777	Chinese Tallow Tree
1316	362206.6449	3366004.046	Chinese Tallow Tree
1317	362192.7542	3366019.961	Chinese Tallow Tree
1318	362276.8092	3365983.63	Chinese Tallow Tree
1319	362239.8204	3366002.124	Chinese Tallow Tree
1320	362244.8409	3366007.581	Chinese Tallow Tree
1321	362268.6534	3366012.542	Chinese Tallow Tree
1322	362245.5553	3365997.779	Chinese Tallow Tree
1323	362229.0452	3366000.08	Chinese Tallow Tree
1324	362229.1246	3365987.261	Chinese Tallow Tree
1325	362232.6965	3365991.19	Chinese Tallow Tree
1326	362239.5029	3365994.471	Chinese Tallow Tree
1327	362272.4436	3365985.442	Chinese Tallow Tree

1328	362260.5142	3365990.916	Chinese Tallow Tree
1329	362248.6079	3365970.596	Chinese Tallow Tree
1330	362283.8902	3365968.77	Chinese Tallow Tree
1331	362276.3098	3365967.461	Chinese Tallow Tree
1332	362235.9872	3365957.062	Chinese Tallow Tree
1333	362242.8135	3365947.498	Chinese Tallow Tree
1334	362227.9307	3365951.982	Chinese Tallow Tree
1335	362229.5579	3365957.697	Chinese Tallow Tree
1336	362297.4236	3365938.608	Chinese Tallow Tree
1337	362293.177	3365938.528	Chinese Tallow Tree
1338	362293.2564	3365950.157	Chinese Tallow Tree
1339	362302.8856	3366009.286	Chinese Tallow Tree
1340	362372.0539	3365975.469	Chinese Tallow Tree
1341	362375.7449	3365975.588	Chinese Tallow Tree
1342	362353.0832	3365965.746	Chinese Tallow Tree
1343	362355.9804	3365969.675	Chinese Tallow Tree
1344	362329.9454	3365979.954	Chinese Tallow Tree
1345	362378.4039	3366003.806	Chinese Tallow Tree
1346	362335.3488	3365937.552	Chinese Tallow Tree
1347	362372.6552	3365929.655	Chinese Tallow Tree
1348	362409.5183	3365983.848	Chinese Tallow Tree
1349	362399.4774	3365942.136	Chinese Tallow Tree
1350	362519.056	3365991.6	Chinese Tallow Tree
1351	362538.8072	3365953.652	Chinese Tallow Tree
1352	362493.1004	3365935.76	Chinese Tallow Tree
1353	362532.9864	3365928.153	Chinese Tallow Tree
1354	362536.6244	3365971.565	Chinese Tallow Tree
1355	362566.0726	3366000.021	Chinese Tallow Tree
1356	362553.7298	3365985.852	Chinese Tallow Tree
1357	362574.407	3365990.337	Chinese Tallow Tree
1358	362573.5735	3365984.86	Chinese Tallow Tree
1359	362576.312	3365987.717	Chinese Tallow Tree
1360	362576.8676	3365991.647	Chinese Tallow Tree
1361	362581.1539	3365976.407	Chinese Tallow Tree
1362	362606.9971	3365990.119	Chinese Tallow Tree

1363	362618.652	3365996.574	Chinese Tallow Tree
1364	362619.0754	3365992.024	Chinese Tallow Tree
1365	362640.2421	3365996.469	Chinese Tallow Tree
1366	362663.0095	3365937.03	Chinese Tallow Tree
1367	362675.8418	3365936.831	Chinese Tallow Tree
1368	362679.1822	3365940.403	Chinese Tallow Tree
1369	362629.0436	3365933.359	Chinese Tallow Tree
1370	362769.691	3366005.658	Chinese Tallow Tree
1371	362772.6279	3366007.444	Chinese Tallow Tree
1372	362762.5076	3365957.993	Chinese Tallow Tree
1373	362771.9532	3365938.506	Chinese Tallow Tree
1374	362721.1134	3365938.586	Chinese Tallow Tree
1375	362758.8166	3365928.545	Chinese Tallow Tree
1376	362797.0755	3365979.107	Chinese Tallow Tree
1377	362894.0203	3365956.8	Chinese Tallow Tree
1378	362895.3763	3365958.189	Chinese Tallow Tree
1379	362895.8239	3365939.917	Chinese Tallow Tree
1380	362911.7055	3365933.97	Chinese Tallow Tree
1381	362917.4602	3365930.676	Chinese Tallow Tree
1382	363010.0183	3366006.847	Chinese Tallow Tree
1383	362934.932	3365957.97	Chinese Tallow Tree
1384	362967.9455	3365934.105	Chinese Tallow Tree
1385	362969.5628	3365926.256	Chinese Tallow Tree
1386	362971.2693	3365924.431	Chinese Tallow Tree
1387	362967.0095	3365929.881	Chinese Tallow Tree
1388	362961.6226	3365957.577	Chinese Tallow Tree
1389	362927.3425	3365926.81	Chinese Tallow Tree
1390	363032.4352	3366001.264	Chinese Tallow Tree
1391	363088.9106	3365982.174	Chinese Tallow Tree
1392	363014.5758	3365948.836	Chinese Tallow Tree
1393	363056.089	3365951.495	Chinese Tallow Tree
1394	363056.6843	3365949.074	Chinese Tallow Tree
1395	363033.6346	3365928.208	Chinese Tallow Tree
1396	363154.3477	3365964.459	Chinese Tallow Tree
1397	363121.5657	3365966.284	Chinese Tallow Tree

1398	363106.167	3365924.374	Chinese Tallow Tree
1399	363171.0992	3365988.943	Chinese Tallow Tree
1400	363217.6924	3365980.079	Chinese Tallow Tree
1401	363217.15	3365960.03	Chinese Tallow Tree
1402	363225.0544	3365956.227	Chinese Tallow Tree
1403	363228.6495	3365931.796	Chinese Tallow Tree
1404	363230.0438	3365936.943	Chinese Tallow Tree
1405	363232.3258	3365937.803	Chinese Tallow Tree
1406	363227.8941	3365937.803	Chinese Tallow Tree
1407	363234.2441	3365936.679	Chinese Tallow Tree
1408	363229.8784	3365934.264	Chinese Tallow Tree
1409	363229.4703	3365966.212	Chinese Tallow Tree
1410	363188.1952	3365933.232	Chinese Tallow Tree
1411	363247.6236	3365975.535	Chinese Tallow Tree
1412	363262.1493	3365939.221	Chinese Tallow Tree
1413	363263.3399	3365944.222	Chinese Tallow Tree
1414	363201.2943	3365931.439	Chinese Tallow Tree
1415	363204.1518	3365934.852	Chinese Tallow Tree
1416	361965.7626	3366002.511	Chinese Tallow Tree
1417	361974.1764	3366019.656	Chinese Tallow Tree
1418	361970.4193	3366027.911	Chinese Tallow Tree
1419	361960.3651	3366023.783	Chinese Tallow Tree
1420	361964.916	3366079.346	Chinese Tallow Tree
1421	361983.0267	3366051.737	Chinese Tallow Tree
1422	361981.9155	3366058.047	Chinese Tallow Tree
1423	361984.7333	3366057.055	Chinese Tallow Tree
1424	361984.8921	3366053.919	Chinese Tallow Tree
1425	361984.257	3366063.167	Chinese Tallow Tree
1426	361988.583	3366080.034	Chinese Tallow Tree
1427	361991.0039	3366101.187	Chinese Tallow Tree
1428	361986.7574	3366087.535	Chinese Tallow Tree
1429	361990.0547	3366107.875	Chinese Tallow Tree
1430	362014.2906	3366102.636	Chinese Tallow Tree
1431	362009.8456	3366082.527	Chinese Tallow Tree
1432	362008.1523	3366070.092	Chinese Tallow Tree

1433	362015.0844	3366069.775	Chinese Tallow Tree
1434	362010.3748	3366052.788	Chinese Tallow Tree
1435	362015.2762	3366051.34	Chinese Tallow Tree
1436	362005.0368	3366054.872	Chinese Tallow Tree
1437	361999.3086	3366036.996	Chinese Tallow Tree
1438	362068.0226	3366102.035	Chinese Tallow Tree
1439	362041.5494	3366058.931	Chinese Tallow Tree
1440	362095.0394	3366099.338	Chinese Tallow Tree
1441	362085.435	3366095.885	Chinese Tallow Tree
1442	362081.5456	3366094.734	Chinese Tallow Tree
1443	362087.8163	3366093.305	Chinese Tallow Tree
1444	362121.5507	3366089.733	Chinese Tallow Tree
1445	362138.7354	3366085.883	Chinese Tallow Tree
1446	362145.9983	3366083.701	Chinese Tallow Tree
1447	362083.1728	3366066.516	Chinese Tallow Tree
1448	362125.202	3366068.778	Chinese Tallow Tree
1449	362102.3022	3366042.584	Chinese Tallow Tree
1450	362114.4202	3366022.608	Chinese Tallow Tree
1451	362127.4377	3366022.45	Chinese Tallow Tree
1452	362129.7131	3366018.587	Chinese Tallow Tree
1453	362115.161	3366035.679	Chinese Tallow Tree
1454	362224.4818	3366100.248	Chinese Tallow Tree
1455	362162.7014	3366099.719	Chinese Tallow Tree
1456	362171.9487	3366090.538	Chinese Tallow Tree
1457	362216.24	3366076.448	Chinese Tallow Tree
1458	362198.6584	3366082.203	Chinese Tallow Tree
1459	362175.203	3366059.621	Chinese Tallow Tree
1460	362168.099	3366059.938	Chinese Tallow Tree
1461	362184.9662	3366056.287	Chinese Tallow Tree
1462	362152.4554	3366046.101	Chinese Tallow Tree
1463	362206.0337	3366040.048	Chinese Tallow Tree
1464	362210.1016	3366036.84	Chinese Tallow Tree
1465	362203.8178	3366037.204	Chinese Tallow Tree
1466	362204.1816	3366032.938	Chinese Tallow Tree
1467	362225.9767	3366036.708	Chinese Tallow Tree

1468	362224.9448	3366024.974	Chinese Tallow Tree
1469	362226.1751	3366031.76	Chinese Tallow Tree
1470	362213.0121	3366024.947	Chinese Tallow Tree
1471	362194.6235	3366021.177	Chinese Tallow Tree
1472	362165.4531	3366030.272	Chinese Tallow Tree
1473	362229.962	3366102.599	Chinese Tallow Tree
1474	362237.4629	3366102.004	Chinese Tallow Tree
1475	362237.3835	3366099.107	Chinese Tallow Tree
1476	362230.0413	3366098.511	Chinese Tallow Tree
1477	362226.7492	3366105.924	Chinese Tallow Tree
1478	362253.6555	3366100.258	Chinese Tallow Tree
1479	362248.2513	3366093.339	Chinese Tallow Tree
1480	362253.3446	3366104.498	Chinese Tallow Tree
1481	362259.774	3366096.401	Chinese Tallow Tree
1482	362269.7488	3366190.434	Chinese Tallow Tree
1483	362254.4691	3366144.198	Chinese Tallow Tree
1484	362250.3812	3366149.397	Chinese Tallow Tree
1485	362251.0956	3366150.866	Chinese Tallow Tree
1486	362236.2128	3366154.2	Chinese Tallow Tree
1487	362268.5085	3366140.147	Chinese Tallow Tree
1488	362257.8723	3366140.266	Chinese Tallow Tree
1489	362233.0675	3366134.035	Chinese Tallow Tree
1490	362236.6791	3366122.843	Chinese Tallow Tree
1491	362246.7597	3366114.509	Chinese Tallow Tree
1492	362261.2457	3366134.749	Chinese Tallow Tree
1493	362258.9174	3366119.708	Chinese Tallow Tree
1494	362248.7573	3366115.898	Chinese Tallow Tree
1495	362286.2015	3366156.134	Chinese Tallow Tree
1496	362301.6135	3366123.392	Chinese Tallow Tree
1497	362290.1041	3366118.398	Chinese Tallow Tree
1498	362252.811	3366074.524	Chinese Tallow Tree
1499	362257.3354	3366071.587	Chinese Tallow Tree
1500	362258.8435	3366058.887	Chinese Tallow Tree
1501	362245.4291	3366067.062	Chinese Tallow Tree
1502	362239.7935	3366052.299	Chinese Tallow Tree

1503	362238.1266	3366054.045	Chinese Tallow Tree
1504	362268.4122	3366057.72	Chinese Tallow Tree
1505	362263.2131	3366062.76	Chinese Tallow Tree
1506	362291.7485	3366066.888	Chinese Tallow Tree
1507	362291.8675	3366063.236	Chinese Tallow Tree
1508	362290.6141	3366090.102	Chinese Tallow Tree
1509	362290.9051	3366057.73	Chinese Tallow Tree
1510	362293.8023	3366053.721	Chinese Tallow Tree
1511	362303.5464	3366061.435	Chinese Tallow Tree
1512	362292.3934	3366039.649	Chinese Tallow Tree
1513	362282.2135	3366086.196	Chinese Tallow Tree
1514	362285.587	3366083.021	Chinese Tallow Tree
1515	362243.8753	3366017.602	Chinese Tallow Tree
1516	362305.6689	3366040.138	Chinese Tallow Tree
1517	362302.1764	3366049.306	Chinese Tallow Tree
1518	362298.6442	3366026.287	Chinese Tallow Tree
1519	362428.1977	3366100.88	Chinese Tallow Tree
1520	362454.4907	3366100.033	Chinese Tallow Tree
1521	362418.8909	3366080.587	Chinese Tallow Tree
1522	362418.8909	3366080.587	Chinese Tallow Tree
1523	362418.8909	3366080.587	Chinese Tallow Tree
1524	362448.5905	3366081.685	Chinese Tallow Tree
1525	362450.8064	3366074.918	Chinese Tallow Tree
1526	362433.2896	3366057.382	Chinese Tallow Tree
1527	362401.6586	3366053.731	Chinese Tallow Tree
1528	362454.2843	3366035.634	Chinese Tallow Tree
1529	362503.8343	3366089.834	Chinese Tallow Tree
1530	362523.6483	3366088.812	Chinese Tallow Tree
1531	362484.8868	3366062.684	Chinese Tallow Tree
1532	362524.2171	3366053.635	Chinese Tallow Tree
1533	362549.0047	3366095.573	Chinese Tallow Tree
1534	362541.1069	3366093.668	Chinese Tallow Tree
1535	362552.4972	3366085.77	Chinese Tallow Tree
1536	362604.4482	3366083.349	Chinese Tallow Tree
1537	362615.3623	3366084.778	Chinese Tallow Tree

1538	362610.1632	3366079.46	Chinese Tallow Tree
1539	362573.2406	3366068.268	Chinese Tallow Tree
1540	362570.9916	3366057.619	Chinese Tallow Tree
1541	362551.9416	3366054.245	Chinese Tallow Tree
1542	362552.5369	3366026.398	Chinese Tallow Tree
1543	362615.4417	3366027.258	Chinese Tallow Tree
1544	362587.4355	3366045.937	Chinese Tallow Tree
1545	362599.2359	3366042.868	Chinese Tallow Tree
1546	362569.285	3366048.689	Chinese Tallow Tree
1547	362578.7571	3366056.521	Chinese Tallow Tree
1548	362543.1375	3366099.972	Chinese Tallow Tree
1549	362619.5857	3366094.69	Chinese Tallow Tree
1550	362677.7016	3366058.879	Chinese Tallow Tree
1551	362648.0153	3366065.97	Chinese Tallow Tree
1552	362710.973	3366083.121	Chinese Tallow Tree
1553	362717.5611	3366041.291	Chinese Tallow Tree
1554	362793.7104	3366030.729	Chinese Tallow Tree
1555	362860.744	3366061.126	Chinese Tallow Tree
1556	362894.0816	3366064.698	Chinese Tallow Tree
1557	362940.4499	3366089.648	Chinese Tallow Tree
1558	362938.1348	3366087.3	Chinese Tallow Tree
1559	362958.0414	3366089.485	Chinese Tallow Tree
1560	362979.4463	3366082.539	Chinese Tallow Tree
1561	362955.971	3366077.638	Chinese Tallow Tree
1562	362977.4222	3366033.641	Chinese Tallow Tree
1563	362980.7163	3366030.863	Chinese Tallow Tree
1564	363022.3432	3366062.141	Chinese Tallow Tree
1565	363065.7548	3366048.667	Chinese Tallow Tree
1566	363062.2226	3366047.079	Chinese Tallow Tree
1567	363035.8799	3366032.762	Chinese Tallow Tree
1568	363049.7785	3366057.011	Chinese Tallow Tree
1569	363115.8782	3366093.623	Chinese Tallow Tree
1570	363116.9498	3366067.707	Chinese Tallow Tree
1571	363125.4429	3366064.571	Chinese Tallow Tree
1572	363160.5267	3366057.19	Chinese Tallow Tree

1573	363098.3495	3366057.084	Chinese Tallow Tree
1574	363099.8246	3366026.862	Chinese Tallow Tree
1575	363124.1134	3366043.134	Chinese Tallow Tree
1576	363202.6	3366063.591	Chinese Tallow Tree
1577	363200.5759	3366061.845	Chinese Tallow Tree
1578	363199.0678	3366061.289	Chinese Tallow Tree
1579	363193.7496	3366054.86	Chinese Tallow Tree
1580	363199.1471	3366046.287	Chinese Tallow Tree
1581	363179.7267	3366036.18	Chinese Tallow Tree
1582	363197.8044	3366015.794	Chinese Tallow Tree
1583	362000.6297	3366141.014	Chinese Tallow Tree
1584	362007.3765	3366139.506	Chinese Tallow Tree
1585	361999.7168	3366147.722	Chinese Tallow Tree
1586	362032.6972	3366134.188	Chinese Tallow Tree
1587	362027.7363	3366144.031	Chinese Tallow Tree
1588	362023.7278	3366142.959	Chinese Tallow Tree
1589	362024.1247	3366138.871	Chinese Tallow Tree
1590	362009.652	3366188.322	Chinese Tallow Tree
1591	362014.6129	3366179.855	Chinese Tallow Tree
1592	362007.3765	3366163.941	Chinese Tallow Tree
1593	362044.3124	3366192.833	Chinese Tallow Tree
1594	362035.0652	3366187.383	Chinese Tallow Tree
1595	362059.9097	3366125.788	Chinese Tallow Tree
1596	362020.6388	3366115.568	Chinese Tallow Tree
1597	362022.9407	3366122.712	Chinese Tallow Tree
1598	362027.1643	3366137.948	Chinese Tallow Tree
1599	362048.3971	3366116.001	Chinese Tallow Tree
1600	362091.0679	3366193.716	Chinese Tallow Tree
1601	362109.5226	3366197.923	Chinese Tallow Tree
1602	362110.9514	3366195.541	Chinese Tallow Tree
1603	362107.9351	3366186.889	Chinese Tallow Tree
1604	362134.6449	3366183.516	Chinese Tallow Tree
1605	362134.5258	3366179.15	Chinese Tallow Tree
1606	362072.6529	3366174.309	Chinese Tallow Tree
1607	362070.4304	3366171.61	Chinese Tallow Tree

1608	362088.8057	3366174.864	Chinese Tallow Tree
1609	362098.3737	3366162.597	Chinese Tallow Tree
1610	362098.0562	3366160.692	Chinese Tallow Tree
1611	362083.1337	3366153.747	Chinese Tallow Tree
1612	362083.6099	3366163.748	Chinese Tallow Tree
1613	362075.474	3366144.619	Chinese Tallow Tree
1614	362079.3634	3366131.839	Chinese Tallow Tree
1615	362119.051	3366142.635	Chinese Tallow Tree
1616	362111.4706	3366141.761	Chinese Tallow Tree
1617	362138.4582	3366128.664	Chinese Tallow Tree
1618	362118.7335	3366127.156	Chinese Tallow Tree
1619	362119.0906	3366130.728	Chinese Tallow Tree
1620	362094.6034	3366130.331	Chinese Tallow Tree
1621	362104.7138	3366115.128	Chinese Tallow Tree
1622	362151.4878	3366185.392	Chinese Tallow Tree
1623	362160.5763	3366184.599	Chinese Tallow Tree
1624	362189.6276	3366191.822	Chinese Tallow Tree
1625	362193.9833	3366179.066	Chinese Tallow Tree
1626	362189.2534	3366144.866	Chinese Tallow Tree
1627	362215.8441	3366139.468	Chinese Tallow Tree
1628	362195.2231	3366148.97	Chinese Tallow Tree
1629	362199.9062	3366139.326	Chinese Tallow Tree
1630	362187.5766	3366130.793	Chinese Tallow Tree
1631	362201.1498	3366128.478	Chinese Tallow Tree
1632	362158.0491	3366123.398	Chinese Tallow Tree
1633	362200.4321	3366116.178	Chinese Tallow Tree
1634	362209.6925	3366119.195	Chinese Tallow Tree
1635	362170.8516	3366116.496	Chinese Tallow Tree
1636	362352.0453	3366165.649	Chinese Tallow Tree
1637	362325.2958	3366144.099	Chinese Tallow Tree
1638	362337.4799	3366137.352	Chinese Tallow Tree
1639	362414.9937	3366138.42	Chinese Tallow Tree
1640	362508.4645	3366172.869	Chinese Tallow Tree
1641	362489.4674	3366166.413	Chinese Tallow Tree
1642	362472.1636	3366162.868	Chinese Tallow Tree

1643	362469.2003	3366158.211	Chinese Tallow Tree
1644	362501.1091	3366112.12	Chinese Tallow Tree
1645	362521.7467	3366113.39	Chinese Tallow Tree
1646	362521.7996	3366110.533	Chinese Tallow Tree
1647	362497.2991	3366106.141	Chinese Tallow Tree
1648	362570.5205	3366174.97	Chinese Tallow Tree
1649	362571.4399	3366126.915	Chinese Tallow Tree
1650	362547.1908	3366113.977	Chinese Tallow Tree
1651	362667.4607	3366172.096	Chinese Tallow Tree
1652	362668.5543	3366162.484	Chinese Tallow Tree
1653	362685.4877	3366152.549	Chinese Tallow Tree
1654	362638.0147	3366123.782	Chinese Tallow Tree
1655	362643.3329	3366106.399	Chinese Tallow Tree
1656	362630.6394	3366109.594	Chinese Tallow Tree
1657	362790.1538	3366174.367	Chinese Tallow Tree
1658	362779.2397	3366171.986	Chinese Tallow Tree
1659	362782.4147	3366173.454	Chinese Tallow Tree
1660	362889.636	3366172.167	Chinese Tallow Tree
1661	362890.3503	3366143.116	Chinese Tallow Tree
1662	362902.2566	3366142.838	Chinese Tallow Tree
1663	362869.564	3366127.664	Chinese Tallow Tree
1664	362874.2736	3366134.332	Chinese Tallow Tree
1665	362889.3019	3366128.881	Chinese Tallow Tree
1666	362898.2978	3366133.062	Chinese Tallow Tree
1667	362948.4331	3366168.607	Chinese Tallow Tree
1668	362940.8859	3366157.799	Chinese Tallow Tree
1669	362941.0446	3366135.257	Chinese Tallow Tree
1670	363039.2096	3366139.543	Chinese Tallow Tree
1671	363119.6894	3366184.085	Chinese Tallow Tree
1672	363104.6148	3366152.694	Chinese Tallow Tree
1673	363119.2099	3366107.206	Chinese Tallow Tree
1674	363119.6861	3366099.586	Chinese Tallow Tree
1675	363103.315	3366116.804	Chinese Tallow Tree
1676	363101.8069	3366128.075	Chinese Tallow Tree
1677	362017.0342	3366232.023	Chinese Tallow Tree

1678	362064.1037	3366224.641	Chinese Tallow Tree
1679	362036.415	3366278.219	Chinese Tallow Tree
1680	362032.552	3366282.135	Chinese Tallow Tree
1681	362029.6416	3366279.225	Chinese Tallow Tree
1682	362046.3633	3366251.073	Chinese Tallow Tree
1683	362046.1516	3366246.416	Chinese Tallow Tree
1684	362058.1108	3366274.449	Chinese Tallow Tree
1685	362097.1502	3366216.24	Chinese Tallow Tree
1686	362180.5437	3366252.102	Chinese Tallow Tree
1687	362185.6634	3366247.577	Chinese Tallow Tree
1688	362157.4059	3366206.54	Chinese Tallow Tree
1689	362238.4876	3366269.842	Chinese Tallow Tree
1690	362262.2604	3366233.329	Chinese Tallow Tree
1691	362265.4388	3366196.483	Chinese Tallow Tree
1692	362270.7569	3366194.895	Chinese Tallow Tree
1693	362382.6439	3366231.845	Chinese Tallow Tree
1694	362398.3426	3366225.798	Chinese Tallow Tree
1695	362387.1903	3366230.759	Chinese Tallow Tree
1696	362391.5163	3366212.463	Chinese Tallow Tree
1697	362448.5004	3366266.369	Chinese Tallow Tree
1698	362452.575	3366261.871	Chinese Tallow Tree
1699	362481.6131	3366254.913	Chinese Tallow Tree
1700	362593.2344	3366268.897	Chinese Tallow Tree
1701	362592.4406	3366270.643	Chinese Tallow Tree
1702	362556.444	3366240.917	Chinese Tallow Tree
1703	362684.3967	3366245.032	Chinese Tallow Tree
1704	362721.8684	3366271.662	Chinese Tallow Tree
1705	362723.6213	3366270.306	Chinese Tallow Tree
1706	362759.2574	3366242.065	Chinese Tallow Tree
1707	362778.3312	3366275.823	Chinese Tallow Tree
1708	362780.9831	3366274.714	Chinese Tallow Tree
1709	362781.2609	3366272.412	Chinese Tallow Tree
1710	362804.3194	3366246.218	Chinese Tallow Tree
1711	362785.9771	3366222.2	Chinese Tallow Tree
1712	362804.8485	3366210.069	Chinese Tallow Tree

1713	362841.0271	3366198.662	Chinese Tallow Tree
1714	362839.7174	3366197.63	Chinese Tallow Tree
1715	362883.7757	3366264.35	Chinese Tallow Tree
1716	362901.4267	3366201.651	Chinese Tallow Tree
1717	362901.268	3366198.634	Chinese Tallow Tree
1718	362890.6846	3366201.492	Chinese Tallow Tree
1719	363010.594	3366243.984	Chinese Tallow Tree
1720	363022.5268	3366265.23	Chinese Tallow Tree
1721	363031.2977	3366243.164	Chinese Tallow Tree
1722	363046.185	3366203.54	Chinese Tallow Tree
1723	363043.4068	3366204.691	Chinese Tallow Tree
1724	363099.5132	3366270.871	Chinese Tallow Tree
1725	363097.2907	3366260.315	Chinese Tallow Tree
1726	363098.4813	3366259.759	Chinese Tallow Tree
1727	363103.0057	3366265.752	Chinese Tallow Tree
1728	363106.2204	3366263.41	Chinese Tallow Tree
1729	363112.2132	3366264.323	Chinese Tallow Tree
1730	363112.1735	3366260.354	Chinese Tallow Tree
1731	363103.8788	3366252.615	Chinese Tallow Tree
1732	363102.0532	3366251.345	Chinese Tallow Tree
1733	363101.4579	3366249.162	Chinese Tallow Tree
1734	363099.1163	3366248.726	Chinese Tallow Tree
1735	363105.6647	3366241.741	Chinese Tallow Tree
1736	363113.0466	3366270.356	Chinese Tallow Tree
1737	363095.2269	3366239.836	Chinese Tallow Tree
1738	363124.1592	3366235.311	Chinese Tallow Tree
1739	363137.772	3366226.62	Chinese Tallow Tree
1740	362063.3611	3366323.54	Chinese Tallow Tree
1741	362032.881	3366305.972	Chinese Tallow Tree
1742	362045.0519	3366362.699	Chinese Tallow Tree
1743	362072.7782	3366342.549	Chinese Tallow Tree
1744	362059.2336	3366309.253	Chinese Tallow Tree
1745	362066.1128	3366294.86	Chinese Tallow Tree
1746	362056.6936	3366291.367	Chinese Tallow Tree
1747	362082.808	3366303.133	Chinese Tallow Tree

1748	362129.8279	3366283.663	Chinese Tallow Tree
1749	362222.591	3366317.159	Chinese Tallow Tree
1750	362359.1824	3366325.044	Chinese Tallow Tree
1751	362352.6339	3366326.512	Chinese Tallow Tree
1752	362352.0783	3366321.353	Chinese Tallow Tree
1753	362359.8174	3366307.264	Chinese Tallow Tree
1754	362367.7946	3366282.379	Chinese Tallow Tree
1755	362457.0784	3366307.33	Chinese Tallow Tree
1756	362421.4654	3366300.292	Chinese Tallow Tree
1757	362446.7067	3366275.368	Chinese Tallow Tree
1758	362495.0264	3366296.356	Chinese Tallow Tree
1759	362563.2542	3366301.931	Chinese Tallow Tree
1760	362637.9098	3366327.257	Chinese Tallow Tree
1761	362632.3006	3366282.119	Chinese Tallow Tree
1762	362762.2179	3366327.118	Chinese Tallow Tree
1763	362716.8153	3366309.1	Chinese Tallow Tree
1764	362730.4678	3366308.624	Chinese Tallow Tree
1765	362746.4619	3366302.591	Chinese Tallow Tree
1766	362718.0324	3366297.366	Chinese Tallow Tree
1767	362703.4737	3366295.798	Chinese Tallow Tree
1768	362745.86	3366281.352	Chinese Tallow Tree
1769	362818.1377	3366335.653	Chinese Tallow Tree
1770	362846.3071	3366326.511	Chinese Tallow Tree
1771	362850.5536	3366322.939	Chinese Tallow Tree
1772	362870.1152	3366348.877	Chinese Tallow Tree
1773	362867.3635	3366337.672	Chinese Tallow Tree
1774	362927.4968	3366331.89	Chinese Tallow Tree
1775	362928.8198	3366334.536	Chinese Tallow Tree
1776	362928.2377	3366330.25	Chinese Tallow Tree
1777	362911.7806	3366331.838	Chinese Tallow Tree
1778	362923.6791	3366316.297	Chinese Tallow Tree
1779	362900.7	3366293.556	Chinese Tallow Tree
1780	362991.4749	3366342.475	Chinese Tallow Tree
1781	363008.5538	3366328.307	Chinese Tallow Tree
1782	362988.0088	3366308.45	Chinese Tallow Tree

1783	362990.152	3366311.466	Chinese Tallow Tree
1784	363029.1225	3366336.533	Chinese Tallow Tree
1785	363070.1198	3366333.715	Chinese Tallow Tree
1786	363031.4006	3366280.838	Chinese Tallow Tree
1787	363131.3075	3366340.739	Chinese Tallow Tree
1788	363113.5274	3366345.661	Chinese Tallow Tree
1789	363167.9391	3366270.969	Chinese Tallow Tree
1790	363166.6823	3366273.482	Chinese Tallow Tree

Cogon Grass



FID	POINT_X	POINT_Y	Species
0	362063.5137	3366135.738	Cogon Grass
1	362067.0591	3366152.777	Cogon Grass
2	362074.9437	3366173.521	Cogon Grass
3	362095.4225	3366188.602	Cogon Grass
4	362300.2782	3366114.067	Cogon Grass
5	362277.45	3366130.07	Cogon Grass
6	362312.8724	3366111.527	Cogon Grass
7	362312.2374	3366105.468	Cogon Grass
8	362311.27	3366085.41	Cogon Grass
9	362307.86	3366077.33	Cogon Grass
10	363151.1451	3366177.795	Cogon Grass
11	363159.15	3366186.72	Cogon Grass
12	363132.2486	3366189.416	Cogon Grass
13	363119.9507	3366180.944	Cogon Grass
14	363121.1823	3366215.822	Cogon Grass
15	363127.8882	3366222.127	Cogon Grass
16	363148.1553	3366223.238	Cogon Grass
17	363157.5853	3366215.683	Cogon Grass
18	363168.5871	3366214.93	Cogon Grass
19	363166.8232	3366204.813	Cogon Grass
20	363165.68	3366202.38	Cogon Grass
21	363212.5206	3366249.555	Cogon Grass
22	363217.7323	3366056.439	Cogon Grass
23	363251.1417	3366068.591	Cogon Grass
24	363245.5854	3366066.375	Cogon Grass
25	363250.5133	3366059.298	Cogon Grass
26	363252.663	3366075.305	Cogon Grass
27	363245.9823	3366069.947	Cogon Grass
28	361761.7757	3364714.285	Cogon Grass
29	362351.8053	3364903.747	Cogon Grass
30	362350.8951	3364908.023	Cogon Grass
31	362348.2705	3364898.519	Cogon Grass

32	362050.8703	3364942.812	Cogon Grass
33	362053.7278	3364941.304	Cogon Grass
34	362040.2737	3364942.971	Cogon Grass
35	361754.1306	3364725.727	Cogon Grass
36	361744.7644	3364745.809	Cogon Grass
37	361742.8594	3364725.171	Cogon Grass
38	361898.7257	3364786.277	Cogon Grass
39	362178.0548	3364752.413	Cogon Grass
40	362180.8065	3364747.121	Cogon Grass
41	362157.8406	3364732.357	Cogon Grass
42	362166.5719	3364756.911	Cogon Grass
43	361780.5273	3364811.678	Cogon Grass
44	361784.2315	3364825.383	Cogon Grass
45	361785.2898	3364828.77	Cogon Grass
46	361769.003	3364878.517	Cogon Grass
47	361769.0824	3364882.565	Cogon Grass
48	361769.3602	3364885.462	Cogon Grass
49	361960.3326	3364844.209	Cogon Grass
50	362300.8937	3364831.688	Cogon Grass
51	362292.4799	3364824.385	Cogon Grass
52	362311.4505	3364841.12	Cogon Grass
53	362312.9984	3364842.192	Cogon Grass
54	362313.1968	3364845.843	Cogon Grass
55	362313.6731	3364843.62	Cogon Grass
56	362330.4938	3364872.655	Cogon Grass
57	362328.2713	3364875.671	Cogon Grass
58	362319.1696	3364860.973	Cogon Grass
59	362322.2785	3364866.199	Cogon Grass
60	362317.7144	3364858.261	Cogon Grass
61	362330.9788	3364877.601	Cogon Grass
62	362314.285	3364850.551	Cogon Grass
63	362319.5665	3364856.938	Cogon Grass
64	362318.4089	3364852.579	Cogon Grass
65	362319.3217	3364854.96	Cogon Grass
66	362320.433	3364859.167	Cogon Grass

67	362323.6477	3364864.565	Cogon Grass
68	361899.031	3364919.994	Cogon Grass
69	361932.1614	3364929.226	Cogon Grass
70	362029.335	3364943.041	Cogon Grass
71	362015.5767	3364940.627	Cogon Grass
72	362027.4499	3364944.695	Cogon Grass
73	362039.4553	3364945.158	Cogon Grass
74	362068.5159	3364960.159	Cogon Grass
75	362081.4276	3364960.159	Cogon Grass
76	362270.7585	3364918.495	Cogon Grass
77	362274.165	3364913.765	Cogon Grass
78	362260.9028	3364925.969	Cogon Grass
79	362243.8778	3364932.886	Cogon Grass
80	362235.5611	3364936.248	Cogon Grass
81	362339.2955	3364889.423	Cogon Grass
82	362336.2527	3364884.555	Cogon Grass
83	362334.6322	3364882.405	Cogon Grass
84	362340.1884	3364893.848	Cogon Grass
85	362346.9022	3364898.478	Cogon Grass
86	362337.5426	3364894.708	Cogon Grass
87	362335.8228	3364894.973	Cogon Grass
88	362326.8513	3364894.151	Cogon Grass
89	362372.256	3364939.784	Cogon Grass
90	362378.606	3364945.076	Cogon Grass
91	362385.2735	3364949.203	Cogon Grass
92	362362.2018	3364923.698	Cogon Grass
93	362357.016	3364916.078	Cogon Grass
94	362372.2503	3364941.408	Cogon Grass
95	362367.9803	3364936.412	Cogon Grass
96	362366.8527	3364934.582	Cogon Grass
97	362364.3524	3364931.248	Cogon Grass
98	362361.4155	3364930.534	Cogon Grass
99	362359.9868	3364923.47	Cogon Grass
100	362405.3519	3364959.51	Cogon Grass
101	362401.9785	3364958.254	Cogon Grass

102	362394.8663	3364956.083	Cogon Grass
103	362394.967	3364957.327	Cogon Grass
104	362394.8663	3364956.083	Cogon Grass
105	362378.5628	3364948.729	Cogon Grass
106	362373.668	3364945.09	Cogon Grass
107	362446.6111	3365022.338	Cogon Grass
108	362444.3885	3365021.068	Cogon Grass
109	362443.1979	3365018.687	Cogon Grass
110	362440.7373	3365013.686	Cogon Grass
111	362439.0704	3365009.4	Cogon Grass
112	362438.1973	3365006.304	Cogon Grass
113	362429.9423	3364988.762	Cogon Grass
114	362428.196	3364985.984	Cogon Grass
115	362427.0848	3364984.079	Cogon Grass
116	362427.9579	3364982.174	Cogon Grass
117	362428.6719	3364984.87	Cogon Grass
118	362432.2441	3364988.366	Cogon Grass
119	362434.2285	3364990.826	Cogon Grass
120	362446.1976	3365019.053	Cogon Grass
121	362448.9923	3365024.799	Cogon Grass
122	361838.4318	3365167.08	Cogon Grass
123	361849.2268	3365189.305	Cogon Grass
124	362107.7065	3365131.583	Cogon Grass
125	362104.8953	3365131.781	Cogon Grass
126	362119.0836	3365119.114	Cogon Grass
127	362131.5332	3365107.297	Cogon Grass
128	362498.4023	3365076.167	Cogon Grass
129	362500.4131	3365077.808	Cogon Grass
130	362504.4877	3365080.03	Cogon Grass
131	362506.2869	3365081.882	Cogon Grass
132	362494.116	3365073.614	Cogon Grass
133	362498.2832	3365087.637	Cogon Grass
134	362557.4646	3365132.782	Cogon Grass
135	362566.4075	3365138.497	Cogon Grass
136	362536.9329	3365114.367	Cogon Grass

137	362112.5286	3365221.961	Cogon Grass
138	362609.3361	3365169.962	Cogon Grass
139	362611.519	3365170.319	Cogon Grass
140	362613.8605	3365170.676	Cogon Grass
141	362616.1624	3365171.073	Cogon Grass
142	362627.8702	3365173.494	Cogon Grass
143	362615.7655	3365174.685	Cogon Grass
144	362632.0771	3365176.947	Cogon Grass
145	362634.5378	3365177.542	Cogon Grass
146	362633.1884	3365174.804	Cogon Grass
147	362639.2606	3365176.749	Cogon Grass
148	362633.8631	3365178.812	Cogon Grass
149	362629.6165	3365178.217	Cogon Grass
150	362620.0121	3365175.558	Cogon Grass
151	362632.9966	3365181.511	Cogon Grass
152	362628.2341	3365182.94	Cogon Grass
153	362637.6797	3365182.265	Cogon Grass
154	362641.8469	3365182.146	Cogon Grass
155	362635.8144	3365184.646	Cogon Grass
156	362633.0362	3365184.765	Cogon Grass
157	362629.1072	3365185.083	Cogon Grass
158	362627.2419	3365184.765	Cogon Grass
159	361848.3532	3365243.278	Cogon Grass
160	361858.2936	3365293.265	Cogon Grass
161	361864.1996	3365301.288	Cogon Grass
162	361864.3583	3365302.928	Cogon Grass
163	361866.6867	3365316.687	Cogon Grass
164	361866.6338	3365319.703	Cogon Grass
165	362050.8336	3365323.751	Cogon Grass
166	362052.183	3365324.863	Cogon Grass
167	362052.8577	3365327.006	Cogon Grass
168	362049.9208	3365328.911	Cogon Grass
169	362056.2291	3365321.253	Cogon Grass
170	362064.4068	3365312.956	Cogon Grass
171	362061.5096	3365315.457	Cogon Grass

172	362795.6197	3365268.76	Cogon Grass
173	362797.4718	3365267.536	Cogon Grass
174	362796.4134	3365269.951	Cogon Grass
175	362792.1139	3365266.478	Cogon Grass
176	362790.328	3365264.659	Cogon Grass
177	362788.8066	3365263.501	Cogon Grass
178	362793.073	3365264.725	Cogon Grass
179	362794.429	3365265.552	Cogon Grass
180	362795.9504	3365266.974	Cogon Grass
181	362797.7033	3365268.595	Cogon Grass
182	362805.8877	3365271.256	Cogon Grass
183	362815.1746	3365278.677	Cogon Grass
184	362819.064	3365280.384	Cogon Grass
185	362842.317	3365284.871	Cogon Grass
186	362843.4745	3365287.186	Cogon Grass
187	362861.2507	3365297.262	Cogon Grass
188	362863.3674	3365299.907	Cogon Grass
189	362900.5215	3365278.123	Cogon Grass
190	362923.4081	3365272.997	Cogon Grass
191	362926.2854	3365267.54	Cogon Grass
192	362934.9505	3365266.184	Cogon Grass
193	362952.0678	3365269.941	Cogon Grass
194	363003.5492	3365281.642	Cogon Grass
195	363005.56	3365283.177	Cogon Grass
196	363020.4296	3365290.215	Cogon Grass
197	363017.4134	3365290.268	Cogon Grass
198	363022.4405	3365289.686	Cogon Grass
199	363017.3075	3365286.458	Cogon Grass
200	363015.72	3365286.352	Cogon Grass
201	361892.3889	3365360.409	Cogon Grass
202	361883.4327	3365352.802	Cogon Grass
203	361886.9517	3365355.527	Cogon Grass
204	361876.7255	3365349.442	Cogon Grass
205	361903.4141	3365367.497	Cogon Grass
206	361905.4673	3365368.047	Cogon Grass

207	361904.3031	3365369.402	Cogon Grass
208	361902.8426	3365369.085	Cogon Grass
209	361890.3357	3365362.134	Cogon Grass
210	361887.5576	3365360.414	Cogon Grass
211	361881.6706	3365357.504	Cogon Grass
212	361934.4286	3365382.173	Cogon Grass
213	361933.529	3365382.596	Cogon Grass
214	361926.544	3365378.204	Cogon Grass
215	361931.5777	3365378.932	Cogon Grass
216	361931.7299	3365378.31	Cogon Grass
217	361942.3661	3365383.549	Cogon Grass
218	361945.1707	3365384.448	Cogon Grass
219	361948.2399	3365385.613	Cogon Grass
220	361949.1924	3365386.195	Cogon Grass
221	361946.7582	3365381.855	Cogon Grass
222	361958.2941	3365389.793	Cogon Grass
223	361956.7066	3365389.264	Cogon Grass
224	361959.9874	3365388.311	Cogon Grass
225	361962.792	3365389.581	Cogon Grass
226	361960.1991	3365386.3	Cogon Grass
227	361963.0566	3365387.57	Cogon Grass
228	361961.9454	3365390.851	Cogon Grass
229	361913.7382	3365374.765	Cogon Grass
230	361978.9226	3365402.319	Cogon Grass
231	361980.4739	3365403.647	Cogon Grass
232	361985.471	3365403.444	Cogon Grass
233	361989.8367	3365412.969	Cogon Grass
234	361993.4086	3365416.805	Cogon Grass
235	361998.2372	3365420.708	Cogon Grass
236	361999.494	3365419.186	Cogon Grass
237	362001.6107	3365421.171	Cogon Grass
238	362003.4529	3365425.024	Cogon Grass
239	362000.2216	3365422.494	Cogon Grass
240	362004.2565	3365424.544	Cogon Grass
241	362004.3888	3365427.918	Cogon Grass

242	361988.6461	3365407.28	Cogon Grass
243	361990.8269	3365409.509	Cogon Grass
244	362007.0214	3365399.462	Cogon Grass
245	362002.1001	3365401.472	Cogon Grass
246	361995.168	3365402.319	Cogon Grass
247	362023.5314	3365387.555	Cogon Grass
248	362021.6793	3365384.592	Cogon Grass
249	362019.986	3365387.608	Cogon Grass
250	362016.9698	3365390.466	Cogon Grass
251	362031.2044	3365368.276	Cogon Grass
252	362030.6223	3365377.483	Cogon Grass
253	362036.1256	3365356.74	Cogon Grass
254	362033.1623	3365362.085	Cogon Grass
255	362036.9194	3365354.465	Cogon Grass
256	362051.2334	3365329.065	Cogon Grass
257	362050.0031	3365330.374	Cogon Grass
258	362048.8696	3365334.07	Cogon Grass
259	362046.0343	3365337.756	Cogon Grass
260	362043.0577	3365344.066	Cogon Grass
261	361892.5084	3365464.495	Cogon Grass
262	361895.2072	3365480.106	Cogon Grass
263	361896.6359	3365483.863	Cogon Grass
264	361892.2967	3365456.611	Cogon Grass
265	361889.2276	3365452.06	Cogon Grass
266	362024.044	3365445.703	Cogon Grass
267	362027.9069	3365447.82	Cogon Grass
268	362030.2352	3365446.047	Cogon Grass
269	362032.0344	3365447.423	Cogon Grass
270	362037.0615	3365450.175	Cogon Grass
271	362038.4638	3365453.879	Cogon Grass
272	362042.75	3365456.392	Cogon Grass
273	362048.7561	3365456.604	Cogon Grass
274	362052.4867	3365458.879	Cogon Grass
275	362056.1909	3365460.652	Cogon Grass
276	362054.2594	3365460.811	Cogon Grass

277	362050.6346	3365459.329	Cogon Grass
278	362048.2798	3365458.112	Cogon Grass
279	362051.349	3365461.075	Cogon Grass
280	362049.153	3365459.911	Cogon Grass
281	362058.1224	3365461.049	Cogon Grass
282	362061.2074	3365464.284	Cogon Grass
283	362065.8376	3365465.871	Cogon Grass
284	362071.5923	3365467.194	Cogon Grass
285	362077.5108	3365467.861	Cogon Grass
286	362075.4288	3365466.467	Cogon Grass
287	362071.7246	3365465.276	Cogon Grass
288	362066.3668	3365463.424	Cogon Grass
289	362091.2401	3365471.284	Cogon Grass
290	362082.771	3365469.972	Cogon Grass
291	362082.5726	3365467.988	Cogon Grass
292	362095.3387	3365473.346	Cogon Grass
293	362104.1361	3365477.05	Cogon Grass
294	362118.7923	3365486.95	Cogon Grass
295	362122.0202	3365488.59	Cogon Grass
296	362129.164	3365492.242	Cogon Grass
297	362135.8884	3365493.714	Cogon Grass
298	362129.1111	3365490.072	Cogon Grass
299	362121.9144	3365486.368	Cogon Grass
300	361903.1198	3365508.366	Cogon Grass
301	361906.2231	3365515.368	Cogon Grass
302	361907.8106	3365522.353	Cogon Grass
303	361911.6206	3365528.544	Cogon Grass
304	361915.9069	3365536.164	Cogon Grass
305	361911.407	3365535.639	Cogon Grass
306	361908.7979	3365528.822	Cogon Grass
307	361906.0867	3365522.796	Cogon Grass
308	361903.2529	3365518.842	Cogon Grass
309	361901.4513	3365512.491	Cogon Grass
310	361898.7539	3365506.903	Cogon Grass
311	361910.7475	3365564.364	Cogon Grass

312	361910.8533	3365567.062	Cogon Grass
313	361909.3717	3365553.304	Cogon Grass
314	361913.9754	3365546.742	Cogon Grass
315	361913.9225	3365538.54	Cogon Grass
316	361913.2346	3365573.783	Cogon Grass
317	362145.5443	3365504.948	Cogon Grass
318	362143.2028	3365503.361	Cogon Grass
319	362155.2678	3365507.66	Cogon Grass
320	362151.5636	3365504.697	Cogon Grass
321	362147.0128	3365501.945	Cogon Grass
322	362154.0507	3365509.565	Cogon Grass
323	362178.022	3365526.975	Cogon Grass
324	362175.9582	3365528.139	Cogon Grass
325	362179.1862	3365530.468	Cogon Grass
326	362177.9162	3365530.997	Cogon Grass
327	362181.6203	3365534.966	Cogon Grass
328	362180.2974	3365535.124	Cogon Grass
329	362183.2608	3365537.506	Cogon Grass
330	362193.7912	3365576.77	Cogon Grass
331	362195.6433	3365581.162	Cogon Grass
332	362192.5741	3365574.918	Cogon Grass
333	362198.7654	3365569.044	Cogon Grass
334	362195.0083	3365566.61	Cogon Grass
335	362188.7112	3365562.429	Cogon Grass
336	362202.1785	3365534.919	Cogon Grass
337	362204.5598	3365537.38	Cogon Grass
338	362209.0444	3365537.181	Cogon Grass
339	362197.416	3365530.633	Cogon Grass
340	362193.606	3365531.665	Cogon Grass
341	361928.1019	3365624.764	Cogon Grass
342	361931.2108	3365633.429	Cogon Grass
343	361931.8722	3365644.277	Cogon Grass
344	361928.6972	3365652.413	Cogon Grass
345	361930.1525	3365658.3	Cogon Grass
346	361931.2108	3365661.475	Cogon Grass

347	361935.6426	3365661.012	Cogon Grass
348	361921.7984	3365612.648	Cogon Grass
349	361926.8893	3365621.589	Cogon Grass
350	361924.1773	3365616.496	Cogon Grass
351	361921.505	3365605.298	Cogon Grass
352	361918.2241	3365604.874	Cogon Grass
353	361914.3083	3365576.511	Cogon Grass
354	362215.5044	3365608.14	Cogon Grass
355	362216.8604	3365610.356	Cogon Grass
356	362218.2494	3365612.737	Cogon Grass
357	362219.6716	3365614.953	Cogon Grass
358	362221.5237	3365618.26	Cogon Grass
359	362222.3505	3365620.046	Cogon Grass
360	362223.3096	3365622.13	Cogon Grass
361	362224.8971	3365625.139	Cogon Grass
362	362226.3854	3365626.561	Cogon Grass
363	362210.2458	3365604.535	Cogon Grass
364	362209.3197	3365602.914	Cogon Grass
365	362213.5862	3365610.256	Cogon Grass
366	362217.6872	3365618.194	Cogon Grass
367	362219.6385	3365622.361	Cogon Grass
368	362221.2591	3365625.007	Cogon Grass
369	362222.0859	3365626.561	Cogon Grass
370	362210.0903	3365598.403	Cogon Grass
371	362208.1721	3365595.195	Cogon Grass
372	362205.8901	3365591.954	Cogon Grass
373	362204.2695	3365589.837	Cogon Grass
374	362203.6742	3365586.794	Cogon Grass
375	362202.3513	3365584.81	Cogon Grass
376	362201.2599	3365583.09	Cogon Grass
377	362198.0187	3365582.826	Cogon Grass
378	362198.5148	3365584.182	Cogon Grass
379	362205.2948	3365595.03	Cogon Grass
380	362205.9231	3365596.154	Cogon Grass
381	362207.1799	3365598.006	Cogon Grass

382	362207.4776	3365598.965	Cogon Grass
383	362199.7716	3365576.443	Cogon Grass
384	362198.4817	3365573.466	Cogon Grass
385	362200.863	3365579.022	Cogon Grass
386	362232.9129	3365636.924	Cogon Grass
387	362233.3362	3365638.935	Cogon Grass
388	362231.59	3365634.808	Cogon Grass
389	362229.6321	3365629.251	Cogon Grass
390	362228.4679	3365627.24	Cogon Grass
391	362227.6212	3365640.575	Cogon Grass
392	362224.8166	3365633.696	Cogon Grass
393	362223.8112	3365631.633	Cogon Grass
394	362229.7908	3365645.55	Cogon Grass
395	362231.3783	3365650.1	Cogon Grass
396	363268.7445	3365631.072	Cogon Grass
397	363270.7686	3365637.144	Cogon Grass
398	363266.9586	3365634.128	Cogon Grass
399	363268.1492	3365634.208	Cogon Grass
400	361937.3365	3365671.693	Cogon Grass
401	361937.1714	3365674.225	Cogon Grass
402	361935.6934	3365672.488	Cogon Grass
403	361935.6431	3365670.264	Cogon Grass
404	361936.384	3365676.349	Cogon Grass
405	361938.6065	3365676.72	Cogon Grass
406	362240.3756	3365734.572	Cogon Grass
407	362241.0224	3365756.039	Cogon Grass
408	362239.8464	3365715.945	Cogon Grass
409	362241.3281	3365704.938	Cogon Grass
410	362240.0581	3365700.811	Cogon Grass
411	362246.536	3365675.675	Cogon Grass
412	361978.9779	3365831.855	Cogon Grass
413	361979.7187	3365833.918	Cogon Grass
414	361980.6183	3365836.088	Cogon Grass
415	361980.6712	3365838.946	Cogon Grass
416	361982.9995	3365837.781	Cogon Grass

417	361983.37	3365838.893	Cogon Grass
418	361976.3845	3365831.776	Cogon Grass
419	361964.084	3365802.094	Cogon Grass
420	361997.5191	3365804.908	Cogon Grass
421	361997.0561	3365802.527	Cogon Grass
422	362003.4723	3365795.251	Cogon Grass
423	362003.1415	3365783.873	Cogon Grass
424	362239.2597	3365758.88	Cogon Grass
425	362239.8682	3365761.526	Cogon Grass
426	362238.8099	3365762.531	Cogon Grass
427	362237.1166	3365758.06	Cogon Grass
428	362241.3499	3365757.213	Cogon Grass
429	362244.8689	3365766.182	Cogon Grass
430	362250.7162	3365769.834	Cogon Grass
431	362243.9957	3365775.628	Cogon Grass
432	362245.4509	3365777.295	Cogon Grass
433	362245.9007	3365778.565	Cogon Grass
434	362245.398	3365781.528	Cogon Grass
435	362243.8899	3365785.021	Cogon Grass
436	362243.6253	3365788.354	Cogon Grass
437	362236.217	3365799.361	Cogon Grass
438	362237.5134	3365802.192	Cogon Grass
439	362238.4659	3365807.272	Cogon Grass
440	362237.4341	3365814.601	Cogon Grass
441	362240.662	3365817.273	Cogon Grass
442	362245.3187	3365860.427	Cogon Grass
443	362245.742	3365864.052	Cogon Grass
444	362246.0859	3365867.253	Cogon Grass
445	362246.0595	3365866.063	Cogon Grass
446	362241.1382	3365860.11	Cogon Grass
447	362239.4978	3365858.231	Cogon Grass
448	362240.3445	3365862.993	Cogon Grass
449	362246.033	3365868.682	Cogon Grass
450	362246.5887	3365870.111	Cogon Grass
451	362246.668	3365872.571	Cogon Grass

452	362246.9855	3365873.736	Cogon Grass
453	362247.6999	3365876.62	Cogon Grass
454	362247.8057	3365878.048	Cogon Grass
455	362247.9116	3365879.239	Cogon Grass
456	362247.9116	3365881.197	Cogon Grass
457	362248.4407	3365884.266	Cogon Grass
458	362248.8376	3365886.409	Cogon Grass
459	362246.3505	3365885.086	Cogon Grass
460	362244.7101	3365877.704	Cogon Grass
461	362243.7047	3365877.387	Cogon Grass
462	363258.9414	3365552.362	Cogon Grass
463	363258.9414	3365554.148	Cogon Grass
464	363259.5764	3365562.919	Cogon Grass
465	363259.5764	3365565.419	Cogon Grass
466	363261.4814	3365549.068	Cogon Grass
467	363262.2566	3365779.566	Cogon Grass
468	363263.1298	3365787.146	Cogon Grass
469	363263.7251	3365785.241	Cogon Grass
470	363263.696	3365763.171	Cogon Grass
471	363263.6457	3365765.834	Cogon Grass
472	363263.561	3365761.492	Cogon Grass
473	363258.6795	3365770.54	Cogon Grass
474	363260.8279	3365737.459	Cogon Grass
475	363264.4395	3365735.554	Cogon Grass
476	363264.9554	3365727.101	Cogon Grass
477	363264.6379	3365724.799	Cogon Grass
478	363264.0029	3365723.41	Cogon Grass
479	363269.1887	3365713.396	Cogon Grass
480	363269.1887	3365715.221	Cogon Grass
481	363269.2152	3365716.306	Cogon Grass
482	363266.49	3365713.025	Cogon Grass
483	363272.0877	3365685.965	Cogon Grass
484	363272.4977	3365686.963	Cogon Grass
485	363272.2	3365688.153	Cogon Grass
486	363271.8693	3365690.072	Cogon Grass

487	363271.9024	3365691.758	Cogon Grass
488	363271.7701	3365692.75	Cogon Grass
489	363270.4472	3365694.735	Cogon Grass
490	363270.573	3365696.925	Cogon Grass
491	363274.7136	3365674.197	Cogon Grass
492	363273.5685	3365675.251	Cogon Grass
493	363273.4568	3365679.025	Cogon Grass
494	363273.5891	3365680.447	Cogon Grass
495	363273.4237	3365682.795	Cogon Grass
496	363272.9277	3365684.681	Cogon Grass
497	363248.4867	3365423.338	Cogon Grass
498	363249.2805	3365426.381	Cogon Grass
499	363246.7008	3365428.696	Cogon Grass
500	363247.2961	3365431.738	Cogon Grass
501	363230.4383	3365407.143	Cogon Grass
502	363228.4149	3365255.797	Cogon Grass
503	363228.7324	3365257.861	Cogon Grass
504	363227.5418	3365258.932	Cogon Grass
505	363237.2653	3365271.553	Cogon Grass
506	363235.7968	3365263.655	Cogon Grass
507	363239.0909	3365257.384	Cogon Grass
508	363241.0356	3365257.107	Cogon Grass
509	363216.7468	3365252.9	Cogon Grass
510	363215.0005	3365252.661	Cogon Grass
511	363217.4215	3365249.209	Cogon Grass
512	363207.1424	3365248.653	Cogon Grass
513	363224.6843	3365258.019	Cogon Grass
514	363226.9862	3365259.766	Cogon Grass
515	363205.5245	3365253.2	Cogon Grass
516	363197.8846	3365253.345	Cogon Grass
517	363209.394	3365251.996	Cogon Grass
518	363191.0517	3365248.96	Cogon Grass
519	363186.7126	3365249.119	Cogon Grass
520	363183.5376	3365249.066	Cogon Grass
521	363177.6638	3365249.066	Cogon Grass

522	363174.383	3365248.378	Cogon Grass
523	363171.3138	3365248.06	Cogon Grass
524	363187.9296	3365252.452	Cogon Grass
525	363177.3463	3365252.4	Cogon Grass
526	363198.513	3365249.33	Cogon Grass
527	363198.0367	3365246.102	Cogon Grass
528	363191.6338	3365247.161	Cogon Grass
529	363190.1521	3365243.774	Cogon Grass
530	363149.3652	3365256.179	Cogon Grass
531	363117.6945	3365253.441	Cogon Grass
532	363278.1938	3365794.49	Cogon Grass
533	363279.6225	3365797.56	Cogon Grass
534	363280.3104	3365800.1	Cogon Grass
535	363286.925	3365808.037	Cogon Grass
536	363288.4067	3365812.112	Cogon Grass
537	363293.3809	3365821.743	Cogon Grass
538	363294.545	3365823.806	Cogon Grass
539	363295.6563	3365825.817	Cogon Grass
540	363299.2546	3365831.268	Cogon Grass
541	363299.9425	3365834.178	Cogon Grass
542	363303.8584	3365827.246	Cogon Grass
543	363297.0321	3365821.743	Cogon Grass
544	363294.8625	3365819.15	Cogon Grass
545	363293.3809	3365815.657	Cogon Grass
546	363290.3117	3365811.53	Cogon Grass
547	363288.5654	3365806.026	Cogon Grass
548	361984.1849	3365887.095	Cogon Grass
549	361982.0418	3365884.357	Cogon Grass
550	361977.0411	3365881.857	Cogon Grass
551	361976.6046	3365883.484	Cogon Grass
552	361987.7171	3365885.23	Cogon Grass
553	361989.9396	3365889.397	Cogon Grass
554	361988.8283	3365886.619	Cogon Grass
555	361985.574	3365882.015	Cogon Grass
556	361983.0736	3365879.952	Cogon Grass

557	361981.2083	3365877.769	Cogon Grass
558	361985.4549	3365892.136	Cogon Grass
559	361983.9071	3365889.834	Cogon Grass
560	361987.7171	3365894.636	Cogon Grass
561	361993.3527	3365896.105	Cogon Grass
562	361991.5668	3365894.12	Cogon Grass
563	361973.7325	3365875.857	Cogon Grass
564	361977.7806	3365877.088	Cogon Grass
565	361996.7976	3365902.118	Cogon Grass
566	361997.3003	3365904.606	Cogon Grass
567	361996.7711	3365906.669	Cogon Grass
568	361992.2468	3365903.891	Cogon Grass
569	361988.1259	3365912.933	Cogon Grass
570	361998.1867	3365914.656	Cogon Grass
571	361988.5558	3365914.868	Cogon Grass
572	361999.88	3365922.7	Cogon Grass
573	361994.7471	3365926.034	Cogon Grass
574	361994.6942	3365930.055	Cogon Grass
575	361995.1704	3365931.96	Cogon Grass
576	361989.8787	3365928.362	Cogon Grass
577	362005.5441	3365892.725	Cogon Grass
578	362009.1953	3365890.344	Cogon Grass
579	362011.2591	3365890.463	Cogon Grass
580	362248.9948	3365869.225	Cogon Grass
581	362247.4404	3365863.074	Cogon Grass
582	362259.3169	3365902.417	Cogon Grass
583	362262.1744	3365907.259	Cogon Grass
584	362258.2057	3365898.964	Cogon Grass
585	362263.9604	3365912.617	Cogon Grass
586	363272.1723	3365828.154	Cogon Grass
587	363273.998	3365829.979	Cogon Grass
588	363273.998	3365825.812	Cogon Grass
589	363276.2602	3365828.035	Cogon Grass
590	363277.8874	3365829.463	Cogon Grass
591	363282.2927	3365836.29	Cogon Grass

592	363283.2849	3365837.877	Cogon Grass
593	363281.2211	3365837.718	Cogon Grass
594	363282.9674	3365839.981	Cogon Grass
595	363285.9092	3365842.853	Cogon Grass
596	363288.2458	3365848.513	Cogon Grass
597	363295.6277	3365858.594	Cogon Grass
598	363297.0565	3365860.142	Cogon Grass
599	363311.0265	3365879.086	Cogon Grass
600	363309.8689	3365877.862	Cogon Grass
601	363308.2153	3365875.944	Cogon Grass
602	363312.6471	3365880.74	Cogon Grass
603	363318.1337	3365887.054	Cogon Grass
604	363307.3223	3365879.714	Cogon Grass
605	363319.2716	3365883.845	Cogon Grass
606	363320.105	3365885.909	Cogon Grass
607	363317.7238	3365880.908	Cogon Grass
608	363322.0497	3365893.092	Cogon Grass
609	361995.5329	3365934.788	Cogon Grass
610	361998.8005	3365947.66	Cogon Grass
611	361992.1529	3365954.705	Cogon Grass
612	361993.6213	3365955.062	Cogon Grass
613	361990.4066	3365947.283	Cogon Grass
614	362013.7429	3365983.359	Cogon Grass
615	362013.9017	3365985.621	Cogon Grass
616	362013.7429	3365987.884	Cogon Grass
617	362013.7429	3365990.424	Cogon Grass
618	362013.9017	3365992.686	Cogon Grass
619	362015.0129	3365994.432	Cogon Grass
620	362015.2113	3365996.535	Cogon Grass
621	362015.6876	3365998.083	Cogon Grass
622	362015.9257	3365999.71	Cogon Grass
623	362015.8464	3366000.901	Cogon Grass
624	362015.5685	3366001.774	Cogon Grass
625	362009.3773	3365999.353	Cogon Grass
626	361997.3013	3365964.679	Cogon Grass

627	361998.8888	3365969.283	Cogon Grass
628	362008.4932	3365983.729	Cogon Grass
629	362009.9649	3366009.334	Cogon Grass
630	362297.1965	3366014.046	Cogon Grass
631	362300.2921	3366018.729	Cogon Grass
632	362303.6259	3366004.282	Cogon Grass
633	362302.807	3366003.083	Cogon Grass
634	362297.1744	3366001.111	Cogon Grass
635	362301.324	3365990.551	Cogon Grass
636	362295.7678	3366001.028	Cogon Grass
637	363268.4396	3365968.624	Cogon Grass
638	363269.564	3365967.731	Cogon Grass
639	363271.2177	3365966.276	Cogon Grass
640	363274.0289	3365963.928	Cogon Grass
641	363275.5172	3365962.969	Cogon Grass
642	363281.2719	3365958.834	Cogon Grass
643	363280.1474	3365956.089	Cogon Grass
644	363279.0229	3365956.883	Cogon Grass
645	363271.9122	3365962.472	Cogon Grass
646	363270.8208	3365963.299	Cogon Grass
647	363268.7372	3365962.539	Cogon Grass
648	363282.0656	3365958.206	Cogon Grass
649	363298.536	3365948.747	Cogon Grass
650	363294.1703	3365951.195	Cogon Grass
651	363295.3279	3365950.732	Cogon Grass
652	363303.702	3365946.194	Cogon Grass
653	363285.1811	3365956.036	Cogon Grass
654	363306.6653	3365945.109	Cogon Grass
655	363309.9991	3365944.024	Cogon Grass
656	363307.0622	3365946.379	Cogon Grass
657	363311.6924	3365942.701	Cogon Grass
658	363315.9522	3365937.833	Cogon Grass
659	363317.3016	3365937.595	Cogon Grass
660	362278.6939	3366169.926	Cogon Grass
661	362299.1998	3366048.77	Cogon Grass

662	363214.1998	3366061.548	Cogon Grass
663	363215.8534	3366058.936	Cogon Grass
664	362049.2703	3366194.185	Cogon Grass
665	362047.8944	3366191.91	Cogon Grass
666	362321.3277	3366136.942	Cogon Grass
667	362319.3698	3366132.867	Cogon Grass
668	362329.1065	3366142.022	Cogon Grass
669	362332.546	3366146.202	Cogon Grass
670	362390.1162	3366186.885	Cogon Grass
671	362387.3381	3366187.361	Cogon Grass
672	362392.8149	3366180.178	Cogon Grass
673	363086.3122	3366105.411	Cogon Grass
674	363084.7247	3366104.3	Cogon Grass
675	363088.9712	3366107.118	Cogon Grass
676	363092.7416	3366113.151	Cogon Grass
677	363091.397	3366112.462	Cogon Grass
678	363089.6062	3366109.499	Cogon Grass
679	363136.2061	3366148.091	Cogon Grass
680	363134.6186	3366148.011	Cogon Grass
681	363133.6661	3366144.122	Cogon Grass
682	363131.5626	3366143.328	Cogon Grass
683	363134.9758	3366142.375	Cogon Grass
684	363135.0948	3366133.565	Cogon Grass
685	363133.7454	3366130.43	Cogon Grass
686	363132.3167	3366127.85	Cogon Grass
687	363130.6101	3366130.866	Cogon Grass
688	363176.4195	3366160.659	Cogon Grass
689	363175.6258	3366158.357	Cogon Grass
690	363177.8086	3366160.897	Cogon Grass
691	363173.1651	3366154.944	Cogon Grass
692	363216.4458	3366183.419	Cogon Grass
693	363217.3983	3366189.054	Cogon Grass
694	363212.0801	3366180.879	Cogon Grass
695	363207.397	3366170.322	Cogon Grass
696	363210.8101	3366166.512	Cogon Grass

697	363216.1283	3366165.401	Cogon Grass
698	363213.747	3366168.02	Cogon Grass
699	363226.6852	3366166.75	Cogon Grass
700	363228.0345	3366171.036	Cogon Grass
701	363230.257	3366173.497	Cogon Grass
702	363218.1126	3366190.483	Cogon Grass
703	363202.2376	3366160.559	Cogon Grass
704	363201.7614	3366166.512	Cogon Grass
705	363201.047	3366170.798	Cogon Grass
706	362059.7513	3366260.638	Cogon Grass
707	362279.2103	3366199.578	Cogon Grass
708	362278.8532	3366201.206	Cogon Grass
709	362281.6313	3366209.461	Cogon Grass
710	362280.52	3366218.946	Cogon Grass
711	362274.17	3366231.844	Cogon Grass
712	362276.3396	3366330.23	Cogon Grass
713	362424.457	3366209.288	Cogon Grass
714	362423.306	3366210.836	Cogon Grass
715	362425.8064	3366209.804	Cogon Grass
716	362442.8385	3366217.269	Cogon Grass
717	362460.1421	3366217.527	Cogon Grass
718	362448.3416	3366212.235	Cogon Grass
719	362447.3891	3366213.77	Cogon Grass
720	362450.035	3366212.553	Cogon Grass
721	362457.6021	3366217.791	Cogon Grass
722	362490.4502	3366239.514	Cogon Grass
723	362486.2168	3366237.186	Cogon Grass
724	362486.5872	3366241.154	Cogon Grass
725	363114.7532	3366208.681	Cogon Grass
726	363116.4995	3366211.221	Cogon Grass
727	363118.206	3366213.086	Cogon Grass
728	363120.1904	3366213.801	Cogon Grass
729	363123.6829	3366225.31	Cogon Grass
730	363223.3739	3366285.062	Cogon Grass
731	363220.3047	3366284.745	Cogon Grass

732	363220.9927	3366282.311	Cogon Grass
733	363225.9668	3366283.422	Cogon Grass
734	363226.8664	3366285.115	Cogon Grass

Camphor Tree



FID	POINT_X	POINT_Y	Species
0	362037.49	3366293.05	Camphor Tree
1	362050.6296	3366261.377	Camphor Tree
2	362076.02	3366239.4	Camphor Tree
3	362050.799	3366227.721	Camphor Tree
4	362053.1273	3366202.453	Camphor Tree
5	362039.7504	3366188.015	Camphor Tree
6	362053.1466	3366118.507	Camphor Tree
7	362007.8656	3366022.109	Camphor Tree
8	362162.9064	3366033.391	Camphor Tree
9	362167.5234	3366015.941	Camphor Tree
10	362190.4934	3366002.355	Camphor Tree
11	362260.06	3366009.39	Camphor Tree
12	362258.08	3366017.2	Camphor Tree
13	362254	3366029	Camphor Tree
14	362283.79	3365991.93	Camphor Tree
15	362287.3603	3365995.101	Camphor Tree
16	362288.4319	3366001.729	Camphor Tree
17	362291.93	3366035.2	Camphor Tree
18	362290.7981	3366052.243	Camphor Tree
19	362322.47	3366094.07	Camphor Tree
20	362309.2211	3366116.792	Camphor Tree
21	362279	3366111	Camphor Tree
22	363135.191	3366157.667	Camphor Tree
23	363123.57	3366158.33	Camphor Tree
24	363108	3366133	Camphor Tree
25	363122.69	3366172.95	Camphor Tree
26	363194.5689	3366237.926	Camphor Tree
27	361852.7521	3364777.081	Camphor Tree
28	361844.7462	3364777.128	Camphor Tree
29	361830.9111	3364770.427	Camphor Tree
30	362004.6822	3365925.363	Camphor Tree
31	361960.8931	3365670.333	Camphor Tree

32	362023.2632	3365539.718	Camphor Tree
33	361994.8469	3365559.8	Camphor Tree
34	361987.8884	3365579.353	Camphor Tree
35	361911.992	3365390.313	Camphor Tree
36	362143.8623	3365530.58	Camphor Tree
37	362155.5305	3365549.392	Camphor Tree
38	361937.4026	3364751.182	Camphor Tree
39	361994.3146	3364784.203	Camphor Tree
40	361995.5211	3364764.888	Camphor Tree
41	362108.0486	3364766.065	Camphor Tree
42	362114.0811	3364770.828	Camphor Tree
43	362118.8436	3364771.992	Camphor Tree
44	362126.1461	3364778.024	Camphor Tree
45	362125.0349	3364783.872	Camphor Tree
46	362133.8984	3364777.257	Camphor Tree
47	362156.0018	3364753.352	Camphor Tree
48	361809.2241	3364842.813	Camphor Tree
49	361803.1915	3364848.792	Camphor Tree
50	361805.4934	3364816.52	Camphor Tree
51	361803.9059	3364810.09	Camphor Tree
52	361777.474	3364826.442	Camphor Tree
53	361823.4398	3364843.08	Camphor Tree
54	361858.0077	3364848.332	Camphor Tree
55	362186.8664	3364879.767	Camphor Tree
56	362186.8664	3364879.767	Camphor Tree
57	362184.7629	3364855.81	Camphor Tree
58	362216.7353	3364845.688	Camphor Tree
59	362227.4509	3364821.002	Camphor Tree
60	362271.3736	3364830.532	Camphor Tree
61	362271.3736	3364830.532	Camphor Tree
62	362216.4702	3364877.499	Camphor Tree
63	362058.9677	3364949.117	Camphor Tree
64	362119.66	3364955.725	Camphor Tree
65	362186.9141	3364939.484	Camphor Tree
66	362174.5845	3364939.96	Camphor Tree

67	362238.4826	3364933.543	Camphor Tree
68	362236.4122	3364943.631	Camphor Tree
69	362238.7781	3364949.931	Camphor Tree
70	362305.1774	3364895.632	Camphor Tree
71	362293.9987	3364898.344	Camphor Tree
72	362330.4517	3364922.097	Camphor Tree
73	361746.3463	3364997.585	Camphor Tree
74	361732.191	3365007.11	Camphor Tree
75	361766.19	3365046.666	Camphor Tree
76	361759.4432	3365051.825	Camphor Tree
77	361826.9619	3365068.323	Camphor Tree
78	362263.6063	3364977.183	Camphor Tree
79	362256.0922	3364993.693	Camphor Tree
80	362261.5902	3365003.236	Camphor Tree
81	362259.844	3364981.804	Camphor Tree
82	362273.6552	3364987.996	Camphor Tree
83	361790.4806	3365153.924	Camphor Tree
84	362184.4484	3365062.591	Camphor Tree
85	362178.5217	3365084.658	Camphor Tree
86	361836.3955	3365210.237	Camphor Tree
87	362005.3435	3365161.396	Camphor Tree
88	361824.7365	3365303.822	Camphor Tree
89	362093.7381	3365287.109	Camphor Tree
90	362536.9068	3365245.159	Camphor Tree
91	362639.2564	3365245.958	Camphor Tree
92	362816.9472	3365287.961	Camphor Tree
93	361842.8231	3365387.64	Camphor Tree
94	361852.6656	3365404.467	Camphor Tree
95	362054.5848	3365393.629	Camphor Tree
96	362046.9647	3365388.231	Camphor Tree
97	362055.1404	3365385.135	Camphor Tree
98	362065.8031	3365400.098	Camphor Tree
99	362062.046	3365400.627	Camphor Tree
100	362062.8927	3365394.383	Camphor Tree
101	362066.9144	3365396.288	Camphor Tree

102	362082.3661	3365372.528	Camphor Tree
103	362121.2533	3365401.996	Camphor Tree
104	362121.2533	3365401.996	Camphor Tree
105	362112.7165	3365392.292	Camphor Tree
106	362062.1942	3365377.78	Camphor Tree
107	362080.6517	3365490.581	Camphor Tree
108	362052.996	3365418.768	Camphor Tree
109	362101.6755	3365437.303	Camphor Tree
110	362090.0867	3365433.334	Camphor Tree
111	362108.5018	3365442.383	Camphor Tree
112	362573.6089	3365432.577	Camphor Tree
113	362633.6668	3365455.788	Camphor Tree
114	361879.4876	3365566.427	Camphor Tree
115	362042.0605	3365527.939	Camphor Tree
116	362030.7495	3365528.997	Camphor Tree
117	362085.439	3365512.917	Camphor Tree
118	362120.5228	3365520.458	Camphor Tree
119	362105.4415	3365535.142	Camphor Tree
120	362121.9965	3365566.734	Camphor Tree
121	362107.4444	3365576.576	Camphor Tree
122	362181.0241	3365542.972	Camphor Tree
123	362185.9851	3365557.59	Camphor Tree
124	362194.9579	3365953.715	Camphor Tree
125	361893.3191	3365658.241	Camphor Tree
126	362019.9809	3365668.181	Camphor Tree
127	361991.8424	3365665.813	Camphor Tree
128	362059.3377	3365610.482	Camphor Tree
129	362117.8258	3365648.471	Camphor Tree
130	362115.6033	3365646.645	Camphor Tree
131	362121.4902	3365640.282	Camphor Tree
132	362199.6459	3365590.333	Camphor Tree
133	361894.5599	3365661.751	Camphor Tree
134	361899.7986	3365665.64	Camphor Tree
135	361971.268	3365678.242	Camphor Tree
136	361974.1255	3365680.385	Camphor Tree

137	361979.0931	3365788.117	Camphor Tree
138	361979.9808	3365713.522	Camphor Tree
139	361985.1104	3365725.273	Camphor Tree
140	361959.9882	3365730.379	Camphor Tree
141	362208.2948	3365689.396	Camphor Tree
142	362200.1588	3365696.672	Camphor Tree
143	362909.3563	3365669.897	Camphor Tree
144	362884.75	3365691.011	Camphor Tree
145	362104.7098	3365814.76	Camphor Tree
146	363129.0862	3365256.58	Camphor Tree
147	362057.1909	3365929.291	Camphor Tree
148	362202.9864	3365858.488	Camphor Tree
149	362201.9148	3365856.107	Camphor Tree
150	362204.8517	3365852.892	Camphor Tree
151	362193.2045	3365922.487	Camphor Tree
152	362194.8978	3365926.403	Camphor Tree
153	362243.9847	3365894.918	Camphor Tree
154	362261.0779	3365940.669	Camphor Tree
155	362245.4636	3365930.835	Camphor Tree
156	362264.9144	3365974.403	Camphor Tree
157	362280.3926	3365990.013	Camphor Tree
158	362225.158	3365934.112	Camphor Tree
159	362255.5014	3365937.927	Camphor Tree
160	362263.0542	3365886.499	Camphor Tree
161	362266.8576	3365886.896	Camphor Tree
162	362261.1359	3365883.82	Camphor Tree
163	361940.1123	3365928.883	Camphor Tree
164	361940.1123	3365928.883	Camphor Tree
165	361966.1507	3365963.011	Camphor Tree
166	363119.8085	3366157.217	Camphor Tree
167	363119.6101	3366150.311	Camphor Tree
168	362028.3055	3366261.233	Camphor Tree

Appendix 3 Final Packet

1. Final Report
2. Orthomosaic Map at 350ft
3. Shapefiles for: project perimeter, vegetation classes, soils, historic aerial imagery (1968), species distributions for the 3 invasive species
4. Excel spreadsheet of XY coordinates